

OPERATIONS & ADMINISTRATIVE COMMITTEE AGENDA

Called by: Keith McDonald, Chairman

Members: Paul Arena, John Butitta,

Valerie Hanserd, Joe Hoffman,

Michael Thompson

DATE: THURSDAY, JULY 17, 2025

TIME: 5:30 PM

LOCATION: ROOM 303

COUNTY ADMINISTRATION BLDG

404 ELM STREET

ROCKFORD, IL 61101

AGENDA:

A. Call to Order

B. Roll Call

C. Approval of Minutes – June 5, 2025

D. Public Comment – This is the time we invite the public to address the Operations and Administrative Committee with issues and concerns. We ask you to limit your comments to three minutes. Personal attacks or inappropriate language of any sort will not be tolerated. We will allow a maximum of five speakers on a first come basis with sign up at the meeting. Speakers may not address zoning matters which are pending before the ZBA, the Zoning Committee or the County Board. Personnel matters or pending or threatened litigation may not be addressed in open session. An individual may speak a maximum of three times per calendar year on the same topic. This prohibition shall include the repetition of the same topic in a statement on what is purported to be a different topic. After acknowledgment by the chair, please stand and state your name. Thank you.

E. Discussion – Public Safety Building Design-Build Project Update

F. Resolution Awarding Purchase of Replacement Jail Transport Vehicle for Winnebago County Sheriff's Office Using CIP PSST 2025 Funds

Cost: \$67,156

G. Resolution Awarding Purchase of a Boat Replacement for Sheriff's Office Using CIP 2025 Funds

Cost: \$88,543

H. Resolution Awarding Architecture and Engineering Contract for Juvenile Detention Center Expansion Project

Cost: \$135,000

I. Resolution Awarding Purchase of Email Archiving Software Using CIP 2025 Funds

Cost: \$49,521

J. Resolution Awarding Purchase of Law Library Furniture Upgrades

Cost: \$132,408

K. Future Agenda Items

L. Adjournment

Winnebago County Board
Operations and Administrative Committee Meeting
County Administration Building
404 Elm Street, Room 303
Rockford, IL 61101

Thursday, June 5, 2025
5:30 PM

Present:

Keith McDonald, **Chairperson**
Valerie Hanserd, Vice Chairperson
Paul Arena
John Butitta
Michael Thompson

Absent:

Joe Hoffman

Others Present:

Patrick Thompson, County Administrator
Steve Schultz, Chief Financial Officer
Hope Edwards, Director, Purchasing (Staff Liaison)
Lafakeria Vaughn, State's Attorney's Office
Chris Dornbush, Chief Operations Officer
Debbie Crozier, Director, Human Resources
Marlana Dokken, Director, Chairman's Office of Criminal Justice Initiatives
Shawn Franks, Facilities Director
Debbie Jarvis, Director of Court Services, 17th Judicial Circuit
Kim Kovanda, State's Attorney's Office
Dan Magers, Chief Information Officer
Julie McCray-Grotto, Juvenile Detention
Tom Lawson, Circuit Clerk

AGENDA:

- A. Call to Order
- B. Roll Call
- C. Approval of Minutes – May 15, 2025
- D. Public Comment – This is the time we invite the public to address the Operations and Administrative Committee with issues and concerns. We ask you to limit your comments to three minutes. Personal attacks or inappropriate language of any sort will not be tolerated. We will allow a maximum of five speakers on a first-come basis with sign-up at the meeting. Speakers may not address zoning matters which are pending before the ZBA, the Zoning Committee, or the County Board. Personnel matters or pending or threatened litigation may not be addressed in open session. An individual may speak a maximum of three times per calendar year on the same topic. This prohibition shall include the repetition of the same topic in a statement on what is purported to be a different topic. After acknowledgment by the chair, please stand and state your name. Thank you.
- E. Resolution Awarding Purchase of Replacement Vehicle for Juvenile Detention Center Using CIP 2025 Funds
Cost: \$43,240
- F. Resolution Awarding LED Can Light Upgrades for Criminal Justice Center Using CIP 2025 Funds
Cost: \$60,533
- G. Resolution Awarding Replacement of Nurse Call System for River Bluff Nursing Home
Cost: \$677,211
- H. Discussion – ATT Consulting & Professional Services Legacy Transformation Project
Cost: \$49,121

- I. Resolution Awarding Renewal for Onsite Wellness Clinic Services
- J. Future Agenda Items
- K. Adjournment

Chairperson McDonald called the meeting to order at 5:30 PM.

Roll Call

Chairperson McDonald yes, Mr. Arena yes, Mr. Butitta yes, Mr. Thompson yes, Ms. Hanserd yes.

A quorum is present.

Approval of Minutes – May 15, 2025

Motion: Chairperson McDonald. Second: Mr. Arena.

Chairperson McDonald called for any discussion.

Chairperson McDonald called for a vote to approve the minutes of May 15, 2025.

The motion was passed by a unanimous voice vote.

Public Comment

Chairperson McDonald omitted reading the Public Comment Section of the Agenda because no one was present to speak.

Resolution Awarding Purchase of Replacement Vehicle for Juvenile Detention Center Using CIP 2025 Funds

Cost: \$43,240

Motion: Chairperson McDonald. Second: Mr. Thompson.

Chairperson McDonald called for any discussion.

- Discussion followed.

Chairperson McDonald called for any further discussion.

- Discussion followed.

Chairperson McDonald called for a vote to approve the resolution.

The motion to approve the resolution was passed by a unanimous voice vote.

Resolution Awarding LED Can Light Upgrades for Criminal Justice Center Using CIP 2025 Funds

Cost: \$60,533

Motion: Chairperson McDonald. Second: Ms. Hanserd.

Chairperson McDonald called for any discussion.

- Discussion followed.

Chairperson McDonald called for any further discussion.

Chairperson McDonald called for a vote to approve the resolution.

The motion to approve the resolution was passed by a unanimous voice vote.

Resolution Awarding Replacement of Nurse Call System for River Bluff Nursing Home

Cost: \$677,211

Motion: Chairperson McDonald. Second: Mr. Butitta.

Chairperson McDonald called for any discussion.

- Discussion followed.

Chairperson McDonald called for any further discussion.

Chairperson McDonald called for a vote to approve the resolution.

The motion to approve the resolution was passed by a unanimous voice vote.

Discussion – ATT Consulting & Professional Services Legacy Transformation Project**Cost: \$49,121**

A discussion took place regarding the ATT Consulting & Professional Services Legacy Transformation Project.

Resolution Awarding Renewal for Onsite Wellness Clinic Services

Motion: Chairperson McDonald. Second: Mr. Thompson.

Chairperson McDonald called for any discussion.

- Discussion followed.

Chairperson McDonald called for any further discussion.

Chairperson McDonald called for a vote to approve the resolution.

The motion to approve the resolution was passed by a unanimous voice vote.

Future Agenda Items

- None reported.

Motion to Adjourn

Chairperson McDonald called for a motion to adjourn.

Motion: Mr. Thompson. Second: Mr. Butitta.

A unanimous voice vote passed the motion to adjourn.

The meeting was adjourned at 5:54 p.m.

Respectfully submitted,

Nancy Bleile
Executive Assistant

**Discussion – Public Safety
Building Design-
Build Project Update**



Resolution Executive Summary For CIP Projects

Prepared By: Purchasing Department for Sheriff's Office
Committee Name: Operations and Administrative Committee
Committee Date: July 17, 2025
Board Date: July 24, 2025
Resolution Title: Resolution Awarding Purchase of Replacement Jail Transport Vehicle for Winnebago County Sheriff's Office using CIP PSST 2025 Funds

Budget Information

Budgeted? YES	Amount Budgeted? \$75,000
If not, originally budgeted, explain the funding source?	
If CIP funded, original Board approved amount? \$75,000	
Over or Under approved amount? UNDER	By: \$7,844
Reason for CIP increase? N/A	
ORG/OBJ/Project Codes: 82200-46410-C2526 Descriptor: CIP-PSST 2025 Automobile Budget Impact? \$67,156	

Background Information: The Winnebago County Sheriff's Office (WCSO) requested the purchase of one vehicle using CIP-PSST 2025 funds. The vehicle for purchase is a 2025 Chevrolet Tahoe. This vehicle would support the Corrections Department.

The Purchasing Department and the Sheriff's Office reached out for quotes and availability. Karl Emergency Vehicles presented the best offer for the vehicle and outfitting (See Resolution Exhibit A and B).

This vehicle will replace an existing 2020 Chevrolet Tahoe with 145K miles that is requiring additional repairs and maintenance. Corrections is in need of a reliable vehicle to ensure the safety of the officers. This vehicle is actively used for inmate transportation including transfers to and from other correctional facilities, medical appointments and transporting federal inmates to the Federal Court Facility in Chicago.

Recommended By: Sheriff Gary Caruana

Follow-Up Steps: Purchasing Department will prepare and submit Purchase Orders to Karl Emergency Vehicles in the amount of \$67,156.

RESOLUTION
of the
COUNTY BOARD OF THE COUNTY OF WINNEBAGO, ILLINOIS

Sponsored by: Keith McDonald

Submitted by: Operations and Administrative Committee

2025 CR

**RESOLUTION AWARDING PURCHASE OF REPLACEMENT JAIL TRANSPORT VEHICLE FOR
WINNEBAGO COUNTY SHERIFF'S OFFICE USING CIP PSST 2025 FUNDS**

WHEREAS, the Code of Ordinances for the County of Winnebago, Illinois, provides as in Section 2-357 (b) (1), Conditions for use. All procurements whose value equals or exceeds the competitive bidding threshold of \$30,000.00 shall be awarded by competitive sealed bidding in accordance with this section except as otherwise provided in 2-357(c) (Request for Proposals), 2-357(d) (Professional Services), 2-357(e) (Sole-Source), 2-357(f) (Emergency Procurements), 2-357(g) (Cooperative Joint Purchasing) or as provided by State statute; and

WHEREAS, the Winnebago County Sheriff's Office requested the purchase of one Replacement Truck, using CIP-PSST 2025 funds; and

WHEREAS, the Purchasing Department and the Sheriff's Office obtained quotes for price, delivery and outfitting, resulting in the lowest price and best lead time from Karl Emergency Vehicles; and

WHEREAS, the Operations & Administrative Committee of the County Board for the County of Winnebago, Illinois has reviewed the quotes for the Replacement Truck and Vehicle Outfitting, (Resolution Exhibit A and B) and recommends awarding the purchases to Karl Emergency Vehicles.

NOW, THEREFORE, BE IT RESOLVED, by the County Board of the County of Winnebago, Illinois, that the Director of Purchasing is authorized to issue Purchase Orders, on behalf of the County of Winnebago, Illinois to Karl Emergency Vehicles 5983 NE Industry Dr. Des Moines, IA 50313.

BE IT FURTHER RESOLVED, that this Resolution shall be in full force and effective immediately upon its adoption and the Clerk of the County Board is hereby authorized to prepare and deliver certified copies of this Resolution to the Director of Purchasing, Finance Director, County Administrator, County Sheriff, County Board Office and County Auditor.

Respectfully Submitted,
OPERATIONS AND ADMINISTRATIVE COMMITTEE

AGREE

DISAGREE

KEITH McDONALD, CHAIR

KEITH McDONALD, CHAIR

VALERIE HANSERD, VICE CHAIR

VALERIE HANSERD, VICE CHAIR

PAUL ARENA

PAUL ARENA

JOHN BUTITTA

JOHN BUTITTA

JOE HOFFMAN

JOE HOFFMAN

MICHAEL THOMPSON

MICHAEL THOMPSON

The above and foregoing Resolution was adopted by the County Board of the County of
Winnebago, Illinois this ____ day of _____ 2025.

ATTESTED BY:

JOSEPH CHIARELLI
CHAIR OF THE COUNTY BOARD
OF THE COUNTY OF WINNEBAGO, ILLINOIS

LORI GUMMOW
CLERK OF THE COUNTY BOARD
OF THE COUNTY OF WINNEBAGO, ILLINOIS



Karl Emergency Vehicles

RESOLUTION EXHIBIT A

5983 NE Industry Dr
Des Moines, IA 50313
Phone: 515-264-6325

Quotation

Quote Winnebago County Sheriff (IL)

To: 650 W State ST
Rockford, IL 61102

Quote Number:	13537	Contact:	Hastings
Quote Date:	05/05/2025	Expires:	06/04/2025
Customer:	WINNE61102	Inquiry:	
Salesman:	Jon Thomas	Terms:	UNKNOWN...
Ship Via:		Phone:	(815) 319-6000
		FAX:	

2025 Chevrolet Tahoe PPV

** Need front center console with enough room to store 2 handguns **

Item	Part Number Description	Quantity	MSRP	Price	Total Line Price
1	LABOR LABOR TO INSTALL AND FINSH BUILD - HOURLY STATE BID RATE	60	\$165.00	\$85.00 /HR	\$5,100.00
2	SA315P SA315P SPEAKER, BLACK PLASTIC	1	\$403.00	\$186.00 /EA	\$186.00
3	SAK9 SA315 SIREN MT KIT UNIV SWIVEL	1	\$51.00	\$225.99 /EA	\$225.99
4	IONR ION LIGHT RED	2	\$178.00	\$105.02 /EA	\$210.04
5	IONB ION LIGHT BLUE	2	\$178.00	\$105.02 /EA	\$210.04
6	PSE02FCR STRIP-LITE+ DUO FLASHR BLU/WHT	1	\$218.00	\$128.62 /EA	\$128.62
7	PSD02FCR STRIP-LITE+ DUO FLASHR RED/WHT	1	\$218.00	\$128.62 /EA	\$128.62
8	PSBKT90 STRIP-LITE+ 90 DEG MT KIT	2	\$32.00	\$18.66 /EA	\$37.32
9	BW54UFX WCX DUO IE 12-LT 2021 TAHOE - WITH LIGHTS	1	\$2144.00	\$1,288.70 /EA	\$1,288.70
10	SHIPPING Freight and Shipping on items	1		\$350.00 /EA	\$350.00
11	C399 CENCOM CORE WCX CONTROL CENTER	1	\$1383.00	\$832.62 /EA	\$832.62
12	MMBP-25 MAGNETIC MIC CLIP	1	\$49.21	\$33.00 /EA	\$33.00

<u>Item</u>	<u>Part Number</u> <u>Description</u>	<u>Quantity</u>	<u>MSRP</u>	<u>Price</u>	<u>Total Line Price</u>
13	TAHOE - PPV 2025 Black Pursuit Rated 4wd	1		\$52,600.00 /EA	\$52,600.00
14	SHOP SUPPLIES Expendable materials used for production	1		\$455.00 /EA	\$455.00
15	PK0355TAH21 #10VS RP Horizontal Sliding WindowCoated PolycarbonateRecessed Panel Partition	1	\$1069.00	\$757.23 /EA	\$757.23
16	QK2024TAH21 Full REPLACEMENT Transport SeatTPO PlasticWith Center Pull Seat Belts*INCLUDES REQUIRED: -#12VS Stationary Window Coated Polycarbonate Cargo Partition*Seat Belt Retractors Pre- Installed to Save 30 Minutes of Install Time	1	\$1799.00	\$1,255.42 /EA	\$1,255.42
17	2K0035TAH21RPFR DUAL WALL PRISONER TRANSPORT KIT	1	\$599.00	\$604.31 /EA	\$604.31
18	CG-X ChargeGuard-Select	1	\$107.00	\$62.23 /EA	\$62.23
19	GP-IN2237 BLACK 4-1 SHARKEE	1	\$229.54	\$196.05 /EA	\$196.05
20	C399SP SCANport KIT FOR C399	1	\$185.00	\$111.37 /EA	\$111.37
21	CCTL7 WeCanX 21 BUTTON/SLIDE CTRL HD	1	\$463.00	\$278.74 /EA	\$278.74
22	LOFT-GV LOFT GUN VAULT BY LUND	1		\$820.00 /EA	\$820.00
23	7160-1634 Leg Kit for 2021+ Chevrolet Tahoe	1	\$184.00	\$110.03 /EA	\$110.03
24	7160-0085 29" Long top plate (wide)	1	\$142.00	\$92.30 /EA	\$92.30
25	7170-1114-04 MOBILE WORK STATION BOX, LARGE WITH WORKSTATION CONSOLE BOX AND CONSOLE BOX LEDGE	1	\$1810.00	\$1,082.38 /EA	\$1,082.38
Total:					\$67,156.01

Acknowledgement / Date

RESOLUTION EXHIBIT B

QUOTE TAB			
25NB-2422			
TRANSPORT VEHICLE REPLACEMENT - WINNEBAGO COUNTY JAIL USING CIP 2025 FUNDS			
	Karl Emergency Vehicles Des Moines, IA	Alan Browne Chevrolet Genoa, IL	Curie Motors Chevrolet Inc. Forest Park, IL
2025 Chevrolet Tahoe	\$ 52,600	\$ 82,015	\$ 66,440
Outfitting	\$ 14,556	\$ 14,556	\$ 14,556
Total	\$ 67,156	\$ 96,571	\$ 80,996

Winnebago County Purchasing Department
404 Elm St, Rm 202, Rockford, IL 61101 | www.wincoil.gov
Phone: (815) 319- 4380 | Email: purchasing@purchasing.wincoil.gov



Resolution Executive Summary For CIP Projects

Prepared By: Purchasing Department for Sheriff's Office
Committee Name: Operations and Administrative Committee
Committee Date: July 17, 2025
Board Date: July 24, 2025
Resolution Title: Resolution Awarding Purchase of a Boat Replacement for Sheriff's Office
Using CIP 2025 Funds

Budget Information

Budgeted? YES	Amount Budgeted? \$90,000
If not, originally budgeted, explain the funding source?	
If CIP funded, original Board approved amount? \$90,000	
Over or Under approved amount? UNDER By: \$1,457	
Reason for CIP increase?	
ORG/OBJ/Project Codes: 82200-46430-C2525 Descriptor: CIP 25-Boat Budget Impact? \$88,543	

Background Information: The Winnebago County Sheriff's Office (WCSO) requested the purchase of a new boat to replace an older one. The Sheriff's Office reached out for quotes and availability. Three vendors, Angler's Edge, Loves Park Motorsports and Jim Potts Motor Group, provided boat quotes (See Resolution Exhibit A). Angler's Edge offered the specific boat model, plus all of the additional outfitting options, based on the Sheriff's Office specifications.

Recommended By: Sheriff Gary Caruana

Follow-Up Steps: Purchasing Department will prepare and submit a Purchase Order to Angler's Edge.

RESOLUTION
of the
COUNTY BOARD OF THE COUNTY OF WINNEBAGO, ILLINOIS

Sponsored by: Keith McDonald, Committee Chairman

Submitted by: Operations and Administrative Committee

2025 CR

**RESOLUTION AWARDING PURCHASE OF A BOAT REPLACEMENT FOR SHERIFF'S OFFICE
USING CIP 2025 FUNDS**

WHEREAS, the Code of Ordinances for the County of Winnebago, Illinois, provides as in Section 2-357 (b) (1), Conditions for use. All procurements whose value equals or exceeds the competitive bidding threshold of \$30,000 shall be awarded by competitive sealed bidding in accordance with this section except as otherwise provided in 2-357(c) (Request for Proposals), 2-357(d) (Professional Services), 2-357(e) (Sole-Source), 2-357(f) (Emergency Procurements), 2-357(g) (Cooperative Joint Purchasing) or as provided by State statute; and,

WHEREAS, the Winnebago County Sheriff's Office requested the purchase of a new boat to replace an older one, using CIP 2025 funds; and,

WHEREAS, the Operations & Administrative Committee of the County Board for the County of Winnebago, Illinois has reviewed the quotes for the replacement boat, (Resolution Exhibit A) and recommends awarding the purchase to Angler's Edge, who offered the specific boat model and additional outfitting, that the Sheriff's Office was looking for.

NOW, THEREFORE, BE IT RESOLVED, by the County Board of the County of Winnebago, Illinois that the County will issue, on behalf of the County of Winnebago, a Purchase Order to ANGLER'S EDGE, 217 EAST RIVERSIDE BLVD., LOVES PARK, ILLINOIS 61111 in the amount of EIGHTY-EIGHT THOUSAND, FIVE HUNDRED AND FORTY-THREE DOLLARS (\$88,543).

BE IT FURTHER RESOLVED, that this Resolution shall be in full force and effective immediately upon its adoption and the Clerk of the County Board is hereby authorized to prepare and deliver certified copies of this Resolution to the Director of Purchasing, Finance Director, County Administrator, County Sheriff, County Board Office and County Auditor.

Respectfully Submitted,
OPERATIONS AND ADMINISTRATIVE COMMITTEE

AGREE

DISAGREE

KEITH McDONALD, CHAIR

KEITH McDONALD, CHAIR

VALERIE HANSERD, VICE CHAIR

VALERIE HANSERD, VICE CHAIR

PAUL ARENA

PAUL ARENA

JOHN BUTITTA

JOHN BUTITTA

JOE HOFFMAN

JOE HOFFMAN

MICHAEL THOMPSON

MICHAEL THOMPSON

The above and foregoing Resolution was adopted by the County Board of the County of
Winnebago, Illinois this ____ day of _____ 2025.

ATTESTED BY:

JOSEPH CHIARELLI
CHAIR OF THE COUNTY BOARD
OF THE COUNTY OF WINNEBAGO, ILLINOIS

LORI GUMMOW
CLERK OF THE COUNTY BOARD
OF THE COUNTY OF WINNEBAGO, ILLINOIS

25NB-2421 QUOTE TAB		
WCSO BOAT REPLACEMENT USING CIP 2025 FUNDS		
Angler's Edge Loves Park, IL	Loves Park Motorsports Roscoe, IL	Jim Potts Motor Group Woodstock, IL
Boat Model		
Venus ADX 200	Alumacraft Competitor 205X Sport	Sea Fox 231 Bay Fox F200XC
\$79,478	\$85,368	\$88,561
Outfitting Specifications		
\$9,065	\$9,065	\$9,065
Total Expense		
\$88,543	\$94,433	\$97,626



RESOLUTION EXHIBIT A



June 25, 2025

Winnebago County Sheriff's Department
Patrick Hastings, Deputy
Community Policing Office

Quote: Vexus ADX 200 VXS 57560C525 Mercury Pro XS 4 Stroke 3B541300 Vexus ADX 200 T 7RMBS2026SF006478

Summit White package, Midnight Oil Bottom

Victor Package: Remote Drain Plug, Adjustable Drivers Seat Slide, Color Matched Cockpit Panels, Auto Bilge Pump Replace Standard Bilge, (2) Trolling Motor Batteries and Trays, Color Matched Trailer Step Accents, Boat Buckle Trailer Tie Downs, Custom Aluminum Spare Tire & Carrier.

Revolution Package: Stereo System, Ski Tow Pylon and Assembly, Custom Boat Cover, Rear Side Hand Rails.

MinnKota 15 x 4 Charger	Extra TM Battery Holder and Tray	Extra Gas Piston Kit x 2
Custom Bimini Top	Tilt Hydraulic Steering	Interior Light Package
Humminbird Explore 9 CMSI+ Cons.	Side Imaging, Spot Lock	Humminbird Explore 9 CHO Bow
Raw Water Wash Down System	MinnKota Ulterra Quest MSI WR 60" Auto Deploy & Stow	
Hydraulic Set Back / Dual Trim Levers	Complete EVA Foam Flooring	Tandem Boat Trailer with surge brakes
Fender Step Pads		

Price as equipped	\$82,014.00
Bimini Top / Installed	\$ 1,550.00
Freight & Prep	\$ 1,995.00
Total	\$85,559.00
Mercury Government Discount	\$ 2,086.00
AE Freight & Prep Discount	\$ 1,995.00
AE Promo Discount	\$ 2,000.00
Total Discounts	\$ 6,081.00
Total	\$79,478.00

Angler's Edge will work with your department to educate appointed deputies on boat operations and trouble shooting. We would also like to assist in creating a check off sheet to be utilized by deputies when putting the watercraft inservice and then again when put out of service. This will better serve to have the watercraft water ready when needed.

Depending upon the parameters of any grant dollars, AE would suggest looking into:

1. Installing Emergency Lights & Radio via dedicated wiring to an isolated battery. This lessens the risk of running down the starting battery that would leave the boat inoperative.
2. The trolling motor has a spot lock system that will allow the boat to be held in a specific location such as when attempting to locate a possible drowning victim. It also has side scan so you can look out across the water below the surface rather than just straight down.
3. An addition to this option would be a forward facing sonar that can look across the body of water and locate things such as a submersed body or a vehicle. They are descript enough to find smaller items on the bottom of a body of water.



Angler's Edge
217 E Riverside Blvd
Loves Park IL 61111
815-877-6062
www.anglersedge.net

OUTFITTING

Sold To: Estimate # 01-EST563

Winnebago County Sheriff's Dept Vexus ADX 200

Estimate	Salesperson	Customer	Tax Number	Date	Charge	PO Number
01-EST563	AJD	3372		07/08/2025	N	

Quote to rig Vexus ADX 200 with necessary lights, sirens, and accessories requested:

Emergency Lighting
Emergency Audible Signaling
Tow Bar (To tow stranded boats)
Aluminum Prop For River Use
Mercury Vessel View Mobile To Send Engine Service Data To Dealership
Tie Up Buoys
Tie Up Ropes

SKU	Description	Qty	Retail	Price	Extended
720122	26" HTM FENDER BLACK	2	129.29	129.29	258.58
	Boat Tie Up Bumpers				
MISC	Misc Item	2	25.29	25.29	50.58
	1/2" x 25 Braided Dock Line - Black				
98-8M0173128	MOBILE KIT-SCC UC	1	225.00	225.00	225.00
	Mercury Vessel View Mobile - Engine Diagnostic Data				
48-77346A45	BLMX 13X19	1	237.78	237.78	237.78
	Prop Pitch Subject To Change After Talking To Vexus Factory, Price Will Not Change				
TURBOSWING TOW BAR	Safety Boat Tow Bar	1	1049.00	1049.00	1049.00
XONB	Whelen Smoked ION Super LED Blue	4	143.99	143.99	575.96
295SL100	Whelen Full Funtion Hands Free Siren w/Microp	1	369.99	369.99	369.99
	Whelen Full Funtion Hands Free Siren w/Microphone ::				
ENT2B3B	Soundoff Signal Intersector LED - Blue	4	209.99	209.99	839.96
TOUCH6	Strobes N' More - Touch 6 Lightswitch Panel	1	139.99	139.99	139.99
SA315U	Whelan SA315 Projector Siren Speaker	1	299.99	299.99	299.99
SAK1	Whelan SA315 Speaker Mount	1	57.99	57.99	57.99
MISC	Misc Item	1	88.00	88.00	88.00
	Marine Duplex Wire For Sirens & Lights				
TECH1	Hourly Labor	16	125.00	125.00	2000.00
	Install all requested accessories. See Labor Description Above				
FORWARD FACING SONAR	See Description	1	2800.00	2800.00	2800.00
	Kit to Include: Humminbird Mega Live Imaging 2 Transducer, Brew City 60" Transducer Pole w/Tilt Handle, Rotating Base and Bottom Mount, Includes installation labor for easy deduction if necessary				
SHIPPING	Freight	1	60.00	60.00	60.00
	Oversize outbound freight (Towbar and Brew City Transducer Pole), Normal Size Freight All Other Items. Any excess shipping costs will				

Continued on next page.

be covered by AE.

Parts	6,992.82	Labor	2,000.00	Other	60.00
-------	----------	-------	----------	-------	-------

I hereby authorize the above repair work to be done along with necessary materials. It is distinctly understood that all labor and materials so used shall be charged to this job at current billing rates. You and your employees may operate above equipment for purpose of testing, inspecting or delivering at my risk. An express mechanic's lien is acknowledged to secure the amount of repairs thereto. It is understood that this company assumes no responsibility for loss or damage by fire or theft or weather hazards incidental to equipment or materials placed with them for sale, repair or testing. If legal action is necessary to enforce this contract I will pay all reasonable attorney's fees and other costs incurred. All payments are C.O.D. unless prior arrangements are made. If equipment is not removed within 10 days after completion of service, storage charges will accrue at \$15 per day.

X_____

Sale Total	9,052.82
Shop Supplies	12.00
Tax	0.00
Grand Total	9,064.82
Deposits	0.00
Amount Due	9,064.82



Loves Park Motorsports

11951 Main Street
Roscoe, IL 61073
(815) 636-7636

Bill of Sale

Sales Person: Brandon Jack

Deal # **8432**

Date: 03/26/2025

Buyer: WINNEBAGO COUNTY SHERIFF
650 West State Street , Rockford, IL
(Winnebago) 61101
(P) 815-289-8990

Stock#	Unit	VIN	Mi/Hrs	Price
364D525	New 2025 Alumacraft Competitor 205X Sport ()	ACBD0364D525	0	\$47,790.00
3B393781	New Mercury Marine 300XL Verado 1.85 (Phantom Black)	3B393781	0	\$25,000.00
1000478	New 2025 Heritage Trailers 2025 Heritage KB20T1D-40T (NA)	7Y8KB2028S1000478	0	\$6,999.00
Total Unit(s) Price:				\$79,789.00

Requested Parts & Accessories:

Part #	Part Description	Qty	Total Sale Amount
137-4120201	XPLORE 12 CMSI+	1.000	\$2,699.99
137-7102851	XNT 14 HW T	1.000	\$119.99
137-7201111	14 M ID SIDB Y	1.000	\$65.99
			\$2,885.97

Invoice Summary

Total Unit(s) Price:	\$79,789.00
Total Freight:	\$0.00
Total Set-Up:	\$2,198.00
Total Other:	\$0.00
Total F&I:	\$0.00
Total Parts:	\$2,885.97
Total Service:	\$495.00
Sales Tax:	\$223.66
Doc Fees:	\$0.00
Other Fees:	\$0.00
Total Sale Price:	\$85,367.97
Trade-In Allowance:	\$0.00
Trade-In Payoff:	\$0.00
Trade-In Value:	\$0.00
Cash Back:	\$0.00
Payments:	\$0.00
Balance Due:	\$85,367.97

NEW UNIT SALES ARE SOLD WITH FACTORY BACKED WARRANTIES. USED UNITS ARE SOLD AS IS UNLESS THERE IS REMAING FACTORY BACKED WARRANTY. WARRANTIES MAY BE TRANSFERED INTO NEW OWNERS NAME FOR A FEE. ANY DEPOSITS TOWARDS MAJOR UNITS ARE NON REFUNDABLE. FINAL PAYMENT MAY BE MADE BY CREDIT CARD FOR A CONVIENIENCE FEE OF 3%.

ANY AND ALL SURCHARGES OR FREIGHT FEES ADDED BY THE MANUFACTURER WILL BE PASSED ALONG TO THE CUSTOMER _____ INITIALS

Jim Potts Motor Group

1033 Wanda Lane
Woodstock IL 60098
815-338-0640

Buyer's Order

FEIN # 26-0741344

Winnebago County sheriff

Date 06/04/2025
Deal No.
Salesperson Jim Potts
Lienholder None

H W C 8159786440 Email hastingsp@wcso-il.us

I hereby agree to purchase the following unit(s) from you under the terms and conditions specified. Delivery is to be made as soon as possible. It is agreed, however, that neither you nor the manufacturer will be liable for failure to make delivery.

Unit Information

New/U	Year	Make	Model	Serial No.	Stock No.	Price (Incl factory options)
New	2024	Sea Fox	231 Bay Fox	US-LYGBD124A424	SF3581	\$0.00
New	2024	Yamaha	F200XC	6LWX-1002848	YA3581	\$0.00
New	2024	Yacht Club	Tandem Boat Trai	7UY002721R0590000	T1962	\$82,995.00

Options:

Dealer Unit Price	\$82,995.00
Factory Options	\$0.00
Added Accessories	\$0.00
Freight & Assembly	\$4,990.00

Title Fees	\$180.00
Registration Fees	\$46.00

Notes:

Trade Information

Cash Price	\$88,211.00
Trade Allowance	\$0.00
Payoff	\$0.00
Net Trade	\$0.00
Net Sale (Cash Price - Net Trade)	\$88,211.00
Sales Tax	\$0.00
Title/License/Registration Fees	\$0.00
Document or Administration Fees	\$350.00
Credit Life Insurance	\$0.00
Accident & Disability	\$0.00
Total Other Charges	\$350.00
Sub Total (Net Sale + Other Charges)	\$88,561.00
Cash Down Payment	\$0.00
Amount to Pay/Finance	\$88,561.00

Monthly Payment of \$0.00 For 0 Months at 0.00% Interest

NOTICE TO BUYER: (1) Do not sign this agreement before you read it or if it contains any blank spaces to be filled in. (2) You are entitled to a completely filled in copy of this agreement. (3) If you default in the performance of your obligations under this agreement, the vehicle may be repossessed and you may be subject to suit and liability for the unpaid indebtedness evidenced by this agreement.

TRADE-IN NOTICE: Customer represents that all trade in units described above are free of all liens and encumbrances except as noted.

*With Approved Credit. Interest rates and monthly payment are approximate and may vary from those determined by the lender.

Customer(s) Signature _____ Dealer Signature _____

Thank You for Your Business!



Resolution Executive Summary

Prepared By: Purchasing Department
Committee: Operations & Administrative Committee
Committee Date: July 17, 2025
Board Meeting Date: July 24, 2025
Resolution Title: Resolution Awarding Architecture and Engineering Contract for Juvenile Detention Center Expansion Project

Budget Information:

Was item budgeted? Yes	Appropriation Amount: \$135,000
If not, explain funding source:	
ORG/OBJ/Project Code: 43100-46320-02608	

Background Information: An RFP was previously issued to seek professional qualifications of a firm to conduct a Space Study Analysis for the Juvenile Detention Center. Upon completion of that analysis, funding has been secured to progress with the expansion of a mental health suite.

Venture Architects was previously selected to conduct the Space Study Analysis, the team feels they are the most qualified firm to continue supporting the needs of the Detention Center. Venture Architects submitted a proposal for a three-phase approach to the design, bidding and construction phase of this project (see Resolution Exhibit A).

Venture Architects would formally design and provide construction documents, at which time the Purchasing Department would initiate the formal bidding process for a construction contractor to complete the renovation.

Recommendation: Debbie Jarvis recommends proceeding with Venture Architectures.

Follow-Up: The Purchasing Department will route the agreement for signatures.

RESOLUTION
of the
COUNTY BOARD OF THE COUNTY OF WINNEBAGO, ILLINOIS

Sponsored by: Keith McDonald

Submitted by: Operations and Administrative Committee

2025 CR

**RESOLUTION AWARDING ARCHITECTURE AND ENGINEERING CONTRACT FOR JUVENILE
DETENTION CENTER EXPANSION PROJECT**

WHEREAS, the Code of Ordinances for the County of Winnebago, Illinois, provides as in Section 2-357 (b) (1), Conditions for use. All procurements whose value equals or exceeds the competitive bidding threshold of \$30,000 shall be awarded by competitive sealed bidding in accordance with this section except as otherwise provided in 2-357(c) (Request for Proposals), 2-357(d) (Professional Services), 2-357(e) (Sole-Source), 2-357(f) (Emergency Procurements), 2-357(g) (Cooperative Joint Purchasing) or as provided by State statute; and

WHEREAS, the funding has been secured through the Mental Health Board to proceed with the design phase of the Juvenile Detention Center expansion; and

WHEREAS, the team worked directly with Venture Architects to conduct a space study analysis; and

WHEREAS, Venture Architects will provide construction and design documents to allow the Purchasing Team to conduct an IFB for the construction phase of this renovation; and

WHEREAS, the Operations & Administrative Committee of the County Board for the County of Winnebago, Illinois has reviewed the amendment, (Resolution Exhibit A) and recommends approving the amendment to this agreement.

NOW, THEREFORE, BE IT RESOLVED, by the County Board of the County of Winnebago, Illinois, that the Director of Purchasing is authorized to recommend approval of this amendment, on behalf of the County of Winnebago, Illinois to Venture Architects, 212 North 25th Street, Milwaukee, WI 53233.

BE IT FURTHER RESOLVED, that this Resolution shall be in full force and effective immediately upon its adoption and the Clerk of the County Board is hereby authorized to prepare and deliver certified copies of this Resolution to the Director of Purchasing, Director of Court Services, Finance Director, County Administrator, County Clerk, County Board Office and County Auditor.

Respectfully Submitted,
OPERATIONS AND ADMINISTRATIVE COMMITTEE

AGREE

DISAGREE

KEITH McDONALD, CHAIR

KEITH McDONALD, CHAIR

VALERIE HANSERD, VICE CHAIR

VALERIE HANSERD, VICE CHAIR

PAUL ARENA

PAUL ARENA

JOHN BUTITTA

JOHN BUTITTA

JOE HOFFMAN

JOE HOFFMAN

MICHAEL THOMPSON

MICHAEL THOMPSON

The above and foregoing Resolution was adopted by the County Board of the County of
Winnebago, Illinois this ____ day of _____ 2025.

ATTESTED BY:

JOSEPH CHIARELLI
CHAIR OF THE COUNTY BOARD
OF THE COUNTY OF WINNEBAGO, ILLINOIS

LORI GUMMOW
CLERK OF THE COUNTY BOARD
OF THE COUNTY OF WINNEBAGO, ILLINOIS



Winnebago County

404 Elm Street

Rockford, Illinois 61101

May 21, 2025

Re: **Winnebago County Juvenile Detention Center Addition**

Dear Hope Edwards,

Thank you for selecting Venture Architects to assist you in the development of the Winnebago County Juvenile Center Addition. The following is an account of our project understanding. If there are any discrepancies, please contact us.

Project Scope:

- The purpose of this task is to provide schematic design, design development, construction documents and budget for a Mental Health Suite at the Winnebago County Juvenile Detention Center.
- Our current understanding is that this project addition will be comprised of a Group Therapy room, storage room, Therapist Open- Office, Toilets and a Program/Classroom.
- Our current understanding is the project will be less than \$5,000,000.00
- The aesthetic of the building should be harmonious with the adjacent structure.

Scope of Services:

- Phase 1: Venture Architects will provide schematic design, design development, construction documents and budget.
- Venture to include Structural, Plumbing, Fire Protection, HVAC, Electrical and Low Voltage design.
- Venture Architects to provide an alternate budget for an additional classroom and repair/renovation of two existing showers so they will drain properly and meet accessibility requirements.
- Phase 2 and Phase 3: Venture Architects will provide fees for Bidding and Construction Administration but not to proceed without Winnebago County Board approval.

Schedule:

- The proposed schedule upon receipt of approved proposal:
 - Schematic Design to be completed within 3 weeks
 - Design Development to be completed within 6 weeks

May 21, 2025

240081.01

Winnebago County Juvenile Detention Addition

Page 2 of 2



- o Construction Documents to be completed within 6 weeks

Proposed Fee:

Our proposed fee to provide these services is based on a percentage of construction costs at 9.0%. For reference only, if Construction Costs are \$1,500,000.00 our fee is \$135,000.00, see the following itemized fees would be applicable as a reference:

Phase 1 Schematic Design, Design Development, Construction Documents:
\$101,250.00 (75% of A/E Fee)

Phase 2 Bidding (only proceed upon approval from Winnebago County Board):
\$6,750.00 (5% of A/E Fee)

Phase 3 Construction Administration (only proceed upon approval from Winnebago County Board): \$27,000.00 (20% of A/E Fee)

If the scope identified above changes, there is a potential that this fee basis could increase in a way mutually agreed to all.

Reimbursable expenses such as mileage and printing are included in the above-noted fees. If any supplementary or additional services are added to the scope this figure would likely increase accordingly.

Trusting that this proposal is accepted, we look forward to working with you on this exciting project!
Sincerely,

Venture Architects

A handwritten signature in cursive script that reads 'Cory Beyer'.

Cory Beyer, AIA
Principal | Vice President

Accepted By:

Winnebago County



Resolution Executive Summary

For CIP Projects

Prepared By: Purchasing Department of behalf of DoIT
Committee Name: Operations & Administrative Committee
Committee Date: July 17, 2025
Board Date: July 24, 2025
Resolution Title: Resolution Awarding Purchase of Email Archiving Software Using CIP 2025 Funds

Budget Information

Budgeted? YES	Amount Budgeted? \$47,403
If not, originally budgeted, explain the funding source?	
If CIP funded, original Board approved amount? \$49,521	
Over or Under approved amount? OVER	By: \$2,118
Reason for CIP increase? N/A	
ORG/OBJ/Project Codes: 82200-46586-C2503	Descriptor: CIP 2025 Funds
Budget Impact? \$49,521	

Background Information: The Winnebago County Department of Information Technology (WinCo DoIT) is required to provide a secure and reliable information technology infrastructure for public safety, public health, a nursing home, the circuit courts, elections and all other Elected and Appointed officials.

Winnebago County requires an email archive solution to reduce the storage required for email storage and to comply with retention policies. In June of 2025, the County Purchasing Department issued RFQ 25Q-2419 Email Archiving Software to evaluate market options based on the needs of the County. Three bid submissions were received and evaluated, with Intradyn being the highest evaluated bidder (See Resolution Exhibit A). The flexibility in the search capabilities and redundancy in hardware provided by Intradyn, were both contributing factors to their ranking being higher than the other proposed solutions.

Recommended By: Dan Magers, Chief Information Officer

Follow-Up Steps: Purchasing will prepare the Purchase Order to Intradyn in the amount of \$49,521.

R E S O L U T I O N
of the
COUNTY BOARD OF THE COUNTY OF WINNEBAGO, ILLINOIS

Sponsored by: Keith McDonald, Committee Chairman
Submitted by: Operations and Administrative Committee

2025 CR

RESOLUTION AWARDING PURCHASE OF EMAIL ARCHIVING SOFTWARE USING CIP 2025 FUNDS

WHEREAS, the Code of Ordinances for the County of Winnebago, Illinois, provides as in Section 2-357 (b) (1), Conditions for use. All procurements whose value equals or exceeds the competitive bidding threshold of \$30,000 shall be awarded by competitive sealed bidding in accordance with this section except as otherwise provided in 2-357(c) (Request for Proposals), 2-357(d) (Professional Services), 2-357(e) (Sole-Source), 2-357(f) (Emergency Procurements), 2-357 (g) (Cooperative Joint Purchasing) or as provided by State statute; and,

WHEREAS, Winnebago County requires an Email archive solution to reduce the storage required for email personal archive files and to comply with retention policies; and,

WHEREAS, The County Department of Information Technology (DoIT) and County Purchasing Department, went out for Request for Qualifications for 25Q-2419 Email Archiving Software in June and received three bid submissions; and,

WHEREAS, the Operations and Administrative Committee of the County Board for the County of Winnebago, Illinois has reviewed the bids received for the aforementioned project and recommends awarding the contract as follows:

INTRADYN
18010 JUDICIAL WAY N.
LAKEVILLE, MN. 55044

(See RFQ Tab, Resolution Exhibit A)

NOW, THEREFORE, BE IT RESOLVED, that the County Board of the County of Winnebago, Illinois that the Director of Purchasing is authorized to issue a Purchase Order in the amount of \$49,521, on behalf of the County of Winnebago, to INTRADYN, 18010 JUDICIAL WAY N., LAKEVILLE, MINNESOTA 55044.

BE IT FURTHER RESOLVED, that this Resolution shall be in full force and effective immediately upon its adoption and the Clerk of the County Board is hereby authorized to prepare and deliver certified copies of this Resolution to the Chief Information Officer, Director of Purchasing, Board Office, Finance Director and County Auditor.

Respectfully Submitted,
OPERATIONS AND ADMINISTRATIVE COMMITTEE

AGREE

DISAGREE

KEITH McDONALD, CHAIR

KEITH McDONALD, CHAIR

VALERIE HANSERD, VICE CHAIR

VALERIE HANSERD, VICE CHAIR

PAUL ARENA

PAUL ARENA

JOHN BUTITTA

JOHN BUTITTA

JOE HOFFMAN

JOE HOFFMAN

MICHAEL THOMPSON

MICHAEL THOMPSON

The above and foregoing Resolution was adopted by the County Board of the County of

Winnebago, Illinois this ____ day of _____ 2025.

ATTESTED BY:

JOSEPH CHIARELLI
CHAIR OF THE COUNTY BOARD
OF THE COUNTY OF WINNEBAGO, ILLINOIS

LORI GUMMOW

CLERK OF THE COUNTY BOARD
OF THE COUNTY OF WINNEBAGO, ILLINOIS

REQUEST FOR QUALIFICATIONS TAB

25Q-2419 EMAIL ARCHIVING SOFTWARE

WEDNESDAY, JULY 2, 2025 - 11:00 AM

INTRADYN Lakeville, MN.	INSIGHT PUBLIC SECTOR Chandler, AZ.	AKA COMP SOLUTIONS, INC. Chicago, IL.



Resolution Executive Summary For CIP Projects

Prepared By: Purchasing Department for Court Administration
Committee Name: Operations and Administrative Committee
Committee Date: July 17, 2025
Board Date: July 24, 2025
Resolution Title: Resolution Awarding Purchase of Law Library Furniture Upgrades

Budget Information

Budgeted? YES	Amount Budgeted? \$132,408
If not, originally budgeted, explain the funding source?	
If CIP funded, original Board approved amount? \$132,408	
Over or Under approved amount? NEUTRAL By:	
Reason for CIP increase? N/A	
ORG/OBJ/Project Codes: 41900-46410-C2410 – \$95,408 Descriptor: Multiple Funding Sources 60900-01084 - AOIC Grant – \$37,000	
Budget Impact? \$132,408	

Background Information: The Winnebago Court Administration Office is requesting to purchase new furniture and upgrades for the Law Library using CIP 2024 funds, grant money and Court Administration budgeted funds.

The Court Administration has been extensively upgrading the law library to be more functional for the community and staff. New carpet, painting, lighting and ceiling have already been completed. The last steps are to add new furniture, technology spaces and ADA compliant work and meeting spaces. The proposed new space will allow for twelve (12) individual desks with computer access, large work space table, comfortable conversational seating and reception desk. As well as, PODs for personal and private meetings, two of which are for individuals and one that is ADA compliant. The Illinois Room will have a new conference table and two computer desks for the community as well as use for attorneys and their clients. The Staff will have updated work spaces and offices. Vendors were asked to submit a proposal for the space via RFP. Three proposals were submitted (See Resolution Exhibit A). It was determined and agreed upon, along with Court Administration, that Atmosphere Commercial Interiors has the best design, concept and understanding of the need of the project and have been selected to plan, execute, order and project manage the new furniture for the Law Library (See Resolution Exhibit B).

Recommended By: Court Administrator, Tom Jakeway

Follow-Up Steps: Purchasing Department will issue Purchase Orders to Atmosphere Commercial Interiors.

RESOLUTION
of the
COUNTY BOARD OF THE COUNTY OF WINNEBAGO, ILLINOIS

Sponsored by: Keith McDonald

Submitted by: Operations and Administrative Committee

2025 CR

RESOLUTION AWARDING THE PURCHASE OF LAW LIBRARY FURNITURE UPGRADES

WHEREAS, the Code of Ordinances for the County of Winnebago, Illinois, provides as in Section 2-357 (b) (1), Conditions for use. All procurements whose value equals or exceeds the competitive bidding threshold of \$30,000 shall be awarded by competitive sealed bidding in accordance with this section except as otherwise provided in 2-357(c) (Request for Proposals), 2-357(d) (Professional Services), 2-357(e) (Sole-Source), 2-357(f) (Emergency Procurements), 2-357 (g) (Cooperative Joint Purchasing) or as provided by State statute; and

WHEREAS, the Court Administration team requested CIP Funds to upgrade the furniture within the Law Library of the Winnebago County Courthouse; and

WHEREAS, the team worked directly with Atmosphere Commercial Interiors to design and execute the project; and

WHEREAS, multiple funding sources have been identified to support this project from grant funding sources, CIP funds as well as departmental budgets; and

WHEREAS, the Operations & Administrative Committee of the County Board for the County of Winnebago, Illinois has reviewed the amendment, (Resolution Exhibit B) and recommends approving the amendment to this agreement.

NOW, THEREFORE, BE IT RESOLVED, by the County Board of the County of Winnebago, Illinois, that the Director of Purchasing is authorized to recommend approval of this amendment, on behalf of the County of Winnebago, Illinois to 999 Fourier Dr, Ste 200, Madison, WI 53717.

BE IT FURTHER RESOLVED, that this Resolution shall be in full force and effective immediately upon its adoption and the Clerk of the County Board is hereby authorized to prepare and deliver certified copies of this Resolution to the Director of Purchasing, Finance Director, County Administrator, County Clerk, County Board Office and County Auditor.

Respectfully Submitted,
OPERATIONS AND ADMINISTRATIVE COMMITTEE

AGREE

DISAGREE

KEITH McDONALD, CHAIR

KEITH McDONALD, CHAIR

VALERIE HANSERD, VICE CHAIR

VALERIE HANSERD, VICE CHAIR

PAUL ARENA

PAUL ARENA

JOHN BUTITTA

JOHN BUTITTA

JOE HOFFMAN

JOE HOFFMAN

MICHAEL THOMPSON

MICHAEL THOMPSON

The above and foregoing Resolution was adopted by the County Board of the County of
Winnebago, Illinois this ____ day of _____ 2025.

ATTESTED BY:

JOSEPH CHIARELLI
CHAIR OF THE COUNTY BOARD
OF THE COUNTY OF WINNEBAGO, ILLINOIS

LORI GUMMOW
CLERK OF THE COUNTY BOARD
OF THE COUNTY OF WINNEBAGO, ILLINOIS

PROPOSAL TAB

24P-2364 COURTHOUSE PUBLIC HALLWAY SEATING, LAW LIBRARY, OFFICE SPACE & FURNITURE

Tuesday, October 15, 2024 - 1:00 PM

ODP Business Solutions LLC Lombard, IL	Office Pro Beloit, WI	Atmosphere Commercial Interiors Rockford, IL

Quote To

WINNEBAGO COUNTY
Hope Edwards
404 ELM STREET STE 104
ROCKFORD IL 61101

Ship To

Winnebago County
400 W State St
Rockford IL 61101-1221

Phone +1 (815) 987-3033

Fax +1 (815) 987-3008

Sales Location ROCKFORD, IL

BUDGET QUOTE ONLY - FINAL FINISHES STILL NEED TO BE DECIDED

Price Quote is valid for 30-days

The prices quoted in this bid are based on current governmental laws and regulations. In the event of any changes in law, regulations, tariffs, taxes or other governmental mandates that increase the cost of goods, materials, or services, the seller reserves the right to adjust pricing accordingly. We understand that price increases can be challenging, and we are committed to working closely with you to navigate these changes. Our goal is to ensure minimal disruption to your business and to continue providing you with the high-quality products and services you expect from us.

Description	Quantity	Unit Price	Extended Price
Main Library-Check out			
2 HRVF3524P - Panel Frame 35H x 24W	1	110.58	110.58
Select Paint Color:		345.00	
\$(P1): P1 Paint Opts		67.95%	
.S: Charcoal			
HON COMPAN			
Tag For Main Library-Check out 24/35			
3 HRVF3536P - Panel Frame 35H x 36W	2	115.38	230.76
Select Paint Color:		360.00	
\$(P1): P1 Paint Opts		67.95%	
.P7D: Brownstone			
HON COMPAN			
Tag For Main Library-Check out 36/35			
4 HRVF4236P - Panel Frame 42H x 36W	5	120.19	600.95
Select Paint Color:		375.00	
\$(P1): P1 Paint Opts		67.95%	

THIS PRICE QUOTATION INCORPORATES, BY REFERENCE, ATMOSPHERE COMMERCIAL INTERIORS TERMS AND CONDITIONS
(July 2022 or prior contract signed by client). EXECUTION OF THIS PRICE QUOTATION IS BUYER'S ACCEPTANCE OF THOSE TERMS AND CONDITIONS.

ACCEPTED BY

CLIENT SIGNATURE, TITLE

DATE

ATMOSPHERE COMMERCIAL INTERIORS

Description		Quantity	Unit Price	Extended Price
4	.S: Charcoal HON COMPAN Tag For Main Library-Check out 36/42			
5	HRVF4248P - Panel Frame 42H x 48W Select Paint Color: \$(P1): P1 Paint Opts .S: Charcoal HON COMPAN Tag For Main Library-Check out 48/42	1	133.33 416.00 67.95%	133.33
6	HRVC35PF - Abound Finished End Painted 35" Select Paint Color: \$(P1): P1 Paint Opts .S: Charcoal HON COMPAN Tag For Main Library-Check out 35E-C	1	37.82 118.00 67.95%	37.82
7	HRVC35PL - Abound L Connector Painted 35" Select Paint Color: \$(P1): P1 Paint Opts .S: Charcoal HON COMPAN Tag For Main Library-Check out 35L	1	64.74 202.00 67.95%	64.74
8	HRVC42PF - Abound Finished End Painted 42" Select Paint Color: \$(P1): P1 Paint Opts .S: Charcoal HON COMPAN Tag For Main Library-Check out 42E-C	1	42.31 132.00 67.95%	42.31
9	HRVC42PL - Abound L Connector Painted 42" Select Paint Color: \$(P1): P1 Paint Opts .S: Charcoal HON COMPAN Tag For Main Library-Check out 42L	2	70.51 220.00 67.95%	141.02

THIS PRICE QUOTATION INCORPORATES, BY REFERENCE, ATMOSPHERE COMMERCIAL INTERIORS TERMS AND CONDITIONS
(July 2022 or prior contract signed by client). EXECUTION OF THIS PRICE QUOTATION IS BUYER'S ACCEPTANCE OF THOSE TERMS AND CONDITIONS.

ACCEPTED BY _____ / _____ / _____
CLIENT SIGNATURE, TITLE DATE ATMOSPHERE COMMERCIAL INTERIORS

Description	Quantity	Unit Price	Extended Price
10 HRVC7PFV - Abound Variable Height Finished End-Painted 7" Select Paint Color: \$(P1): P1 Paint Opts .S: Charcoal HON COMPAN Tag For Main Library-Check out VH7-C	1	31.09 97.00 67.95%	31.09
11 HRVTC24 - Abound Top Cap Trim 24"W Select Paint Color: \$(P1): P1 Paint Opts .S: Charcoal HON COMPAN Tag For Main Library-Check out TC24-C	1	17.95 56.00 67.95%	17.95
12 HRVTC36 - Abound Top Cap Trim 36"W Select Paint Color: \$(P1): P1 Paint Opts .S: Charcoal HON COMPAN Tag For Main Library-Check out TC36-C	3	28.85 90.00 67.94%	86.55
13 HRVT3024HS3 - Laminate Tile 30H X 24W Select Laminate: \$(L1STD): Grd L1 Standard Laminates .LKI1: Kingswood Walnut Select Edge Color: .KI: Kingswood Walnut HON COMPAN Tag For Main Library-Check out	1	124.36 388.00 67.95%	124.36
14 HRVT3024T - Abound Fabric Tile 30H x 24W Fabric Selection: \$(A): Grd A Fabric .VST: Vast 11: Beach HON COMPAN Tag For Main Library-Check out	1	47.44 148.00 67.95%	47.44

THIS PRICE QUOTATION INCORPORATES, BY REFERENCE, ATMOSPHERE COMMERCIAL INTERIORS TERMS AND CONDITIONS
(July 2022 or prior contract signed by client). EXECUTION OF THIS PRICE QUOTATION IS BUYER'S ACCEPTANCE OF THOSE TERMS AND CONDITIONS.

ACCEPTED BY _____ / _____ / _____
CLIENT SIGNATURE, TITLE DATE ATMOSPHERE COMMERCIAL INTERIORS

Description		Quantity	Unit Price	Extended Price
15	HRVT3036HS3 - Laminate Tile 30H X 36W Select Laminate: \$(L1STD): Grd L1 Standard Laminates .LK11: Kingswood Walnut Select Edge Color: .KI: Kingswood Walnut HON COMPAN Tag For Main Library-Check out	2	148.72 464.00 67.95%	297.44
16	HRVT3036T - Abound Fabric Tile 30H x 36W Fabric Selection: \$(A): Grd A Fabric .VST: Vast 11: Beach HON COMPAN Tag For Main Library-Check out	2	55.13 172.00 67.95%	110.26
17	HRVT3736HS3 - Laminate Tile 37.5H X 36W Select Laminate: \$(L1STD): Grd L1 Standard Laminates .LK11: Kingswood Walnut Select Edge Color: .KI: Kingswood Walnut HON COMPAN Tag For Main Library-Check out	5	182.69 570.00 67.95%	913.45
18	HRVT3736T - Abound Fabric Tile 37H x 36W Fabric Selection: \$(A): Grd A Fabric .VST: Vast 11: Beach HON COMPAN Tag For Main Library-Check out	5	70.51 220.00 67.95%	352.55
19	HRVT3748HS3 - Laminate Tile 37.5H X 48W Select Laminate: \$(L1STD): Grd L1 Standard Laminates .LK11: Kingswood Walnut Select Edge Color: .KI: Kingswood Walnut	1	217.31 678.00 67.95%	217.31

THIS PRICE QUOTATION INCORPORATES, BY REFERENCE, ATMOSPHERE COMMERCIAL INTERIORS TERMS AND CONDITIONS
(July 2022 or prior contract signed by client). EXECUTION OF THIS PRICE QUOTATION IS BUYER'S ACCEPTANCE OF THOSE TERMS AND CONDITIONS.

ACCEPTED BY _____ / _____ / _____
CLIENT SIGNATURE, TITLE DATE ATMOSPHERE COMMERCIAL INTERIORS

Description		Quantity	Unit Price	Extended Price
19	HON COMPAN Tag For Main Library-Check out			
20	HRVT3748T - Abound Fabric Tile 37H x 48W Fabric Selection: \$(A): Grd A Fabric .VST: Vast 11: Beach HON COMPAN Tag For Main Library-Check out	1	81.73 255.00 67.95%	81.73
21	HH871224 - Electrical Power Harness 24W 3-1 & 2-2 Systems HON COMPAN Tag For Main Library-Check out 24PH	1	96.47 301.00 67.95%	96.47
22	HH871236 - Electrical Power Harness 36W 3-1 & 2-2 Systems HON COMPAN Tag For Main Library-Check out 36PH	5	96.47 301.00 67.95%	482.35
23	HH871501 - Duplex Receptacle Circuit 1 3-1 & 2-2 Systems Select Duplex Color: .S: Charcoal HON COMPAN	4	20.83 65.00 67.95%	83.32
24	HH879072 - Base In-Feed Cable Base 3-1 & 2-2 Systems HON COMPAN Tag For Main Library-Check out BIF	1	107.69 336.00 67.95%	107.69
25	HH871248 - Electrical Power Harness 48W 3-1 & 2-2 Systems HON COMPAN Tag For Main Library-Check out 48PH	1	101.60 317.00 67.95%	101.60
26	HWC3624P - Systems Corner Worksurface 36Wx24D Edgeband Curved Select Laminate: \$(L1STD): Grd L1 Standard Laminates .LK11: Kingswood Walnut Select Edgeband Color: .KI: Kingswood Walnut Select Grommet Color: .S: Charcoal HON COMPAN	2	224.04 699.00 67.95%	448.08

THIS PRICE QUOTATION INCORPORATES, BY REFERENCE, ATMOSPHERE COMMERCIAL INTERIORS TERMS AND CONDITIONS
(July 2022 or prior contract signed by client). EXECUTION OF THIS PRICE QUOTATION IS BUYER'S ACCEPTANCE OF THOSE TERMS AND CONDITIONS.

Description		Quantity	Unit Price	Extended Price
26	Tag For Main Library-Check out 36/24			
27	HWR2436P - Systems Rectangular Worksurface Edgeband 24D x 36W Select Laminate: \$(L1STD): Grd L1 Standard Laminates .LKI1: Kingswood Walnut Select Edgeband Color: .KI: Kingswood Walnut Select Grommet Color: .S: Charcoal HON COMPAN Tag For Main Library-Check out 24/36	1	158.01 493.00 67.95%	158.01
28	HWR2448P - Systems Rectangular Worksurface Edgeband 24D x 48W Select Laminate: \$(L1STD): Grd L1 Standard Laminates .LKI1: Kingswood Walnut Select Edgeband Color: .KI: Kingswood Walnut Select Grommet Color: .S: Charcoal HON COMPAN Tag For Main Library-Check out 24/48	1	184.62 576.00 67.95%	184.62
29	HWR2472P - Systems Rectangular Worksurface Edgeband 24D x 72W Select Laminate: \$(L1STD): Grd L1 Standard Laminates .LKI1: Kingswood Walnut Select Edgeband Color: .KI: Kingswood Walnut Select Grommet Color: .S: Charcoal HON COMPAN Tag For Main Library-Check out 24/72	1	240.38 750.00 67.95%	240.38
30	HBCSR1548P - Systems Raised Straight Countertops 48Wx15D Edgeband Select Laminate: \$(L1STD): Grd L1 Standard Laminates	1	136.22 425.00 67.95%	136.22

THIS PRICE QUOTATION INCORPORATES, BY REFERENCE, ATMOSPHERE COMMERCIAL INTERIORS TERMS AND CONDITIONS (July 2022 or prior contract signed by client). EXECUTION OF THIS PRICE QUOTATION IS BUYER'S ACCEPTANCE OF THOSE TERMS AND CONDITIONS.

Description	Quantity	Unit Price	Extended Price
30 .LDW1: Designer White 15051 Select Edgeband Color: .DW: Designer White HON COMPAN Tag For Main Library-Check out 15/48			
31 HBCSR1572P - Systems Raised Straight Countertops 72Wx15D Edgeband Select Laminate: \$(L1STD): Grd L1 Standard Laminates .LDW1: Designer White 15051 Select Edgeband Color: .DW: Designer White HON COMPAN Tag For Main Library-Check out 15/72	1	185.58 579.00 67.95%	185.58
32 HBCSR3636P - Systems Raised Corner Countertops 36Wx36D:Edgeband Select Laminate: \$(L1STD): Grd L1 Standard Laminates .LDW1: Designer White 15051 Select Edgeband Color: .DW: Designer White HON COMPAN Tag For Main Library-Check out 36/36	1	250.00 780.00 67.95%	250.00
33 HRVBR1536P - Abound Raised Corner Countertop Brackets 36W Select Paint Color: \$(P1): P1 Paint Opts .S: Charcoal HON COMPAN Tag For Main Library-Check out	1	86.54 270.00 67.95%	86.54
34 HRVBR1548 - Abound Raised Straight Countertop Brackets 48W Select Paint Color: \$(P1): P1 Paint Opts .S: Charcoal HON COMPAN Tag For Main Library-Check out	1	75.64 236.00 67.95%	75.64

THIS PRICE QUOTATION INCORPORATES, BY REFERENCE, ATMOSPHERE COMMERCIAL INTERIORS TERMS AND CONDITIONS
(July 2022 or prior contract signed by client). EXECUTION OF THIS PRICE QUOTATION IS BUYER'S ACCEPTANCE OF THOSE TERMS AND CONDITIONS.

ACCEPTED BY _____ / _____ / _____
CLIENT SIGNATURE, TITLE DATE ATMOSPHERE COMMERCIAL INTERIORS

Description	Quantity	Unit Price	Extended Price
35 HRVBR1572 - Abound Raised Straight Countertop Brackets 72W Select Paint Color: \$(P1): P1 Paint Opts .S: Charcoal HON COMPAN Tag For Main Library-Check out	1	102.24 319.00 67.95%	102.24
36 HCTL242 - 24D Cantilever One Pair Select Paint Color: ~: Undecided PAINT Option HON COMPAN Tag For Main Library-Check out CB	5	39.42 123.00 67.95%	197.10
37 H10502 - 10500 Series Floorstnd Full Ht Ped B/B/F 15-5/8W x 22-3/4D Select Laminate: \$(L1STD): Grd L1 Standard Laminates .LKI1: Kingswood Walnut HON COMPAN Tag For Main Library-Check out BBF	1	421.90 927.00 54.49%	421.90
38 H10504 - 10500 Series Floorstnding Full Ht Ped F/F 15-5/8W x 22-3/4D Select Laminate: \$(L1STD): Grd L1 Standard Laminates .LKI1: Kingswood Walnut HON COMPAN Tag For Main Library-Check out FF	1	421.90 927.00 54.49%	421.90
39 HIWMM - Ignition 2 Task Mid-back, ilira back Control Type: .Y0: Simple Synchro-Tilt Control Select Arm Type: .A: Height and Width Adj. Arm Select Caster/Glide Option: .S: Black All-Surface Caster Select Mesh Color: .IF: 4-Way Fog Select Upholstery: \$(2): Grade 2 Uph .WP: Whisper Vinyl	1	414.17 923.00 55.13%	414.17

THIS PRICE QUOTATION INCORPORATES, BY REFERENCE, ATMOSPHERE COMMERCIAL INTERIORS TERMS AND CONDITIONS
(July 2022 or prior contract signed by client). EXECUTION OF THIS PRICE QUOTATION IS BUYER'S ACCEPTANCE OF THOSE TERMS AND CONDITIONS.

Description	Quantity	Unit Price	Extended Price
39 04: Slate Select Lumbar: .NL: No Lumbar Select Base: .SB: Standard Base Select Frame Color: .T: Black HON COMPAN Tag For Main Library-Check out HIWMM			
Sub Total			7,835.45
ILLINOIS TAX EXEMPT			0.00
Total			7,835.45

Main Library-Conference Table

40 HIGS6 - Ignition Guest/Multi-Purpose Chair Four-Leg Stacking Select Arm Type: .F: Fixed Select Caster/Glide Option: .S: All Surface Caster Select Back: .IF: 4-Way Fog Select Upholstery: \$(2): Grade 2 Uph .WP: Whisper Vinyl 04: Slate Select Frame Color: .CBK: Charblack HON COMPAN Tag For Main Library-Conference Table HIGS6	6	318.59	1,911.54
		710.00	
		55.13%	
41 HTLC4296 - Preside 42x96 Rectangle Top - 1 piece	1	732.35	732.35
Edge Selection:		1,731.00	
.J: Knife		57.69%	
.KI: Kingswood Walnut			
Select Grommet:			
.N: No Grommets			
Laminate Top Selection:			

THIS PRICE QUOTATION INCORPORATES, BY REFERENCE, ATMOSPHERE COMMERCIAL INTERIORS TERMS AND CONDITIONS (July 2022 or prior contract signed by client). EXECUTION OF THIS PRICE QUOTATION IS BUYER'S ACCEPTANCE OF THOSE TERMS AND CONDITIONS.

Description		Quantity	Unit Price	Extended Price
41	\$(L1STD): Grd L1 Standard Laminates .LKI1: Kingswood Walnut HON COMPAN Tag For Main Library-Conference Table 42/96			
42	HTTLEG96 - Preside Aluminum T leg for 96" Table Tops Select Base Color: \$(P1): P1 Paint Opts .S: Charcoal HON COMPAN Tag For Main Library-Conference Table 29H	1	465.38 1,100.00 57.69%	465.38
Sub Total				3,109.27
ILLINOIS TAX EXEMPT				0.00
Total				3,109.27
Main Library-Lounge				
43	HFLMC1 - Flock Modular Chair Flock Leg Opt: .TS: TaperedSq PR8 or P7A Frm Select Upholstery: \$(2): Grade 2 Uph .WP: Whisper Vinyl 02: Auburn Flock Frame Opt: .P7A: Textured Charcoal N/A caster HON COMPAN Tag For Main Library-Lounge HFLMC1	4	888.46 1,980.00 55.13%	3,553.84
44	HTLSCUPERTBL - Sculpt 28"H Personal Table Laminate Selection: \$(L1STD): Grd L1 Standard Laminates .LKI1: Kingswood Walnut Select Paint: \$(P1): P1 Paint Opts .P7A: Textured Charcoal HON COMPAN Tag For Main Library-Lounge PERTBL	2	416.31 984.00 57.69%	832.62

THIS PRICE QUOTATION INCORPORATES, BY REFERENCE, ATMOSPHERE COMMERCIAL INTERIORS TERMS AND CONDITIONS (July 2022 or prior contract signed by client). EXECUTION OF THIS PRICE QUOTATION IS BUYER'S ACCEPTANCE OF THOSE TERMS AND CONDITIONS.

Description	Quantity	Unit Price	Extended Price
Sub Total			4,386.46
ILLINOIS TAX EXEMPT			0.00
Total			4,386.46

Main Library-Pods

45	HFCL2 - 26" Wide Lounge Chair	1	707.18	707.18
	Select Upholstery:		1,576.00	
	\$(2): Grade 2 Uph		55.13%	
	.WP: Whisper Vinyl			
	34: Patina			
	Select Flock Base:			
	.4S: 4 Star Base			
	P7A: Textured Charcoal			
	HON COMPAN			
	Tag For Main Library-Pods HFCL2			

46	HICS7 - Ignition Cafe Height Stool 4-leg Frame	1	358.08	358.08
	Select Arm Type:		798.00	
	.N: Armless		55.13%	
	Select Caster/Glide Option:			
	.E: Nylon Glide			
	Select Back:			
	.IF: 4-Way Fog			
	Select Upholstery:			
	\$(2): Grade 2 Uph			
	.WP: Whisper Vinyl			
	34: Patina			
	Select Frame Color:			
	.T: Black			
	HON COMPAN			
	Tag For Main Library-Pods HICS7			

47	HIGS6 - Ignition Guest/Multi-Purpose Chair Four-Leg Stacking	1	318.59	318.59
	Select Arm Type:		710.00	
	.F: Fixed		55.13%	
	Select Caster/Glide Option:			
	.S: All Surface Caster			
	Select Back:			

THIS PRICE QUOTATION INCORPORATES, BY REFERENCE, ATMOSPHERE COMMERCIAL INTERIORS TERMS AND CONDITIONS (July 2022 or prior contract signed by client). EXECUTION OF THIS PRICE QUOTATION IS BUYER'S ACCEPTANCE OF THOSE TERMS AND CONDITIONS.

Description	Quantity	Unit Price	Extended Price
47 .IF: 4-Way Fog Select Upholstery: \$(2): Grade 2 Uph .WP: Whisper Vinyl 34: Patina Select Frame Color: .CBK: Charblack HON COMPAN Tag For Main Library-Pods HIGS6			
48 HCT29SX - Arrange Seated Height X-base for 24-30" Srfc Select Paint Color: \$(P1): P1 Paint Opts .P7A: Textured Charcoal HON COMPAN Tag For Main Library-Pods HCT29SX	1	303.77 718.00 57.69%	303.77
49 HCTRND30 - Arrange Table 30" Round Top Grommet Selection: .N: No Grommet Select Grade: \$(L1PTR): Grd L1 Partnership Laminates .WAC3: Frosty White 1573-60 Select Edgeband Color: .K: Platinum HON COMPAN Tag For Main Library-Pods 30	1	216.19 511.00 57.69%	216.19
50 HCTSDS - Arrange Small Disc Shroud/Base Spt 24-30" Select Paint Color: \$(P1): P1 Paint Opts .P7A: Textured Charcoal HON COMPAN Tag For Main Library-Pods HCTSDS	1	61.77 146.00 57.69%	61.77
51 PPN108960 - POD,OM SIT,V2022,WHITE KIMBALL Tag For Main Library-Pods Om/Sit	1	9,177.36 18,497.00 50.38%	9,177.36

THIS PRICE QUOTATION INCORPORATES, BY REFERENCE, ATMOSPHERE COMMERCIAL INTERIORS TERMS AND CONDITIONS (July 2022 or prior contract signed by client). EXECUTION OF THIS PRICE QUOTATION IS BUYER'S ACCEPTANCE OF THOSE TERMS AND CONDITIONS.

Description		Quantity	Unit Price	Extended Price
52	PPN108962 - POD,OM STAND,V2022,WHITE KIMBALL Tag For Main Library-Pods Om/Stand	1	9,177.36 18,497.00 50.38%	9,177.36
53	PPN109416 - POD,KOLO 4,V2022,WHITE,SEATS 4 KIMBALL Tag For Main Library-Pods Kolo4	1	40,153.73 80,930.00 50.38%	40,153.73
Sub Total				60,474.03
ILLINOIS TAX EXEMPT				0.00
Total				60,474.03
Main Library-Workstations				
54	HETP5036FP - Tackable Panel w/o TC 50H x 36W Fabric Selection: \$(A): Grd A Fabric .APN: Appoint 16: Nimbus Select Paint Color: \$(P1): P1 Paint Opts .S: Charcoal HON COMPAN Tag For Main Library-Workstations 36/50	16	170.83 533.00 67.95%	2,733.28
55	HETP5048FP - Tackable Panel w/o TC 50H x 48W Fabric Selection: \$(A): Grd A Fabric .APN: Appoint 16: Nimbus Select Paint Color: \$(P1): P1 Paint Opts .S: Charcoal HON COMPAN Tag For Main Library-Workstations 48/50	6	202.88 633.00 67.95%	1,217.28
56	HEC50PTN - 50H "T" Connector Post Select Paint Grade: \$(P1): P1 Paint Opts .S: Charcoal	4	58.01 181.00 67.95%	232.04

THIS PRICE QUOTATION INCORPORATES, BY REFERENCE, ATMOSPHERE COMMERCIAL INTERIORS TERMS AND CONDITIONS
(July 2022 or prior contract signed by client). EXECUTION OF THIS PRICE QUOTATION IS BUYER'S ACCEPTANCE OF THOSE TERMS AND CONDITIONS.

Description		Quantity	Unit Price	Extended Price
56	HON COMPAN Tag For Main Library-Workstations CP-50-T			
57	HEC50PXN - 50H "X" Connector Post Select Paint Grade: \$(P1): P1 Paint Opts .S: Charcoal HON COMPAN Tag For Main Library-Workstations CP-50-X	4	56.09 175.00 67.95%	224.36
58	HECST - "T" Connector Strap HON COMPAN Tag For Main Library-Workstations	4	11.22 35.00 67.94%	44.88
59	HECSX - "X" Connector Strap HON COMPAN Tag For Main Library-Workstations	4	13.14 41.00 67.95%	52.56
60	HEFEC50P - Panel Finished End Covers 50H Select Paint Color: \$(P1): P1 Paint Opts .S: Charcoal HON COMPAN Tag For Main Library-Workstations 50E	16	28.53 89.00 67.94%	456.48
61	HETC36 - Panel Top Cap 36"W Select Paint Color: \$(P1): P1 Paint Opts .S: Charcoal HON COMPAN Tag For Main Library-Workstations TC36	16	28.53 89.00 67.94%	456.48
62	HETC48 - Panel Top Cap 48"W Select Paint Color: \$(P1): P1 Paint Opts .S: Charcoal HON COMPAN Tag For Main Library-Workstations TC48	6	32.05 100.00 67.95%	192.30

THIS PRICE QUOTATION INCORPORATES, BY REFERENCE, ATMOSPHERE COMMERCIAL INTERIORS TERMS AND CONDITIONS
(July 2022 or prior contract signed by client). EXECUTION OF THIS PRICE QUOTATION IS BUYER'S ACCEPTANCE OF THOSE TERMS AND CONDITIONS.

ACCEPTED BY _____ / _____ / _____
CLIENT SIGNATURE, TITLE DATE ATMOSPHERE COMMERCIAL INTERIORS

Description		Quantity	Unit Price	Extended Price
63	HH871236 - Electrical Power Harness 36W 3-1 & 2-2 Systems HON COMPAN Tag For Main Library-Workstations 36PH	2	96.47 301.00 67.95%	192.94
64	HH871248 - Electrical Power Harness 48W 3-1 & 2-2 Systems HON COMPAN Tag For Main Library-Workstations 48PH	6	101.60 317.00 67.95%	609.60
65	HH871501 - Duplex Receptacle Circuit 1 3-1 & 2-2 Systems Select Duplex Color: .S: Charcoal HON COMPAN Tag For Main Library-Workstations	12	20.83 65.00 67.95%	249.96
66	HH879072 - Base In-Feed Cable Base 3-1 & 2-2 Systems HON COMPAN Tag For Main Library-Workstations BIF	2	107.69 336.00 67.95%	215.38
67	HWR2448P - Systems Rectangular Worksurface Edgeband 24D x 48W Select Laminate: \$(L1STD): Grd L1 Standard Laminates .LK11: Kingswood Walnut Select Edgeband Color: .KI: Kingswood Walnut Select Grommet Color: .S: Charcoal HON COMPAN Tag For Main Library-Workstations 24/48	12	184.62 576.00 67.95%	2,215.44
68	HCTL241L - Left-hand Cantilever 24"D Select Paint Color: \$(P1): Select P1 Paint .S: Charcoal HON COMPAN Tag For Main Library-Workstations CL	12	21.47 67.00 67.96%	257.64
69	HCTL241R - Right-hand Cantilever 24"D Select Paint Color: \$(P1): Select P1 Paint .S: Charcoal	12	21.47 67.00 67.96%	257.64

THIS PRICE QUOTATION INCORPORATES, BY REFERENCE, ATMOSPHERE COMMERCIAL INTERIORS TERMS AND CONDITIONS (July 2022 or prior contract signed by client). EXECUTION OF THIS PRICE QUOTATION IS BUYER'S ACCEPTANCE OF THOSE TERMS AND CONDITIONS.

Description		Quantity	Unit Price	Extended Price
69	HON COMPAN Tag For Main Library-Workstations CR			
70	HMVH-3672G-FX - Motivate Table HR 36Dx72W 2mm Edge Fixed Base Select Grommet Location: .N: No Grommets Select Grade: \$(L1STD): Grd L1 Standard Laminates .LK11: Kingswood Walnut Select Edge Color: .KI: Kingswood Walnut Select Caster/Glide Option: .G: Glide Select Paint Grade: \$(P1): P1 Paint Opts .S: Charcoal HON COMPAN Tag For Main Library-Workstations 36/72/30H	2	722.62 1,708.00 57.69%	1,445.24
71	HIGS6 - Ignition Guest/Multi-Purpose Chair Four-Leg Stacking Select Arm Type: .F: Fixed Select Caster/Glide Option: .S: All Surface Caster Select Back: .IF: 4-Way Fog Select Upholstery: \$(2): Grade 2 Uph .WP: Whisper Vinyl 04: Slate Select Frame Color: .CBK: Charblack HON COMPAN Tag For Main Library-Workstations HIGS6	6	318.59 710.00 55.13%	1,911.54
72	HIGS6 - Ignition Guest/Multi-Purpose Chair Four-Leg Stacking Select Arm Type: .N: Armless	6	302.88 675.00 55.13%	1,817.28

THIS PRICE QUOTATION INCORPORATES, BY REFERENCE, ATMOSPHERE COMMERCIAL INTERIORS TERMS AND CONDITIONS (July 2022 or prior contract signed by client). EXECUTION OF THIS PRICE QUOTATION IS BUYER'S ACCEPTANCE OF THOSE TERMS AND CONDITIONS.

Description		Quantity	Unit Price	Extended Price
72	Select Caster/Glide Option: .S: All Surface Caster Select Back: .IF: 4-Way Fog Select Upholstery: \$(2): Grade 2 Uph .WP: Whisper Vinyl 04: Slate Select Frame Color: .CBK: Charblack HON COMPAN Tag For Main Library-Workstations HIGS6			
Sub Total				14,782.32
ILLINOIS TAX EXEMPT				0.00
Total				14,782.32
Law Librarian Office				
73	H10592 - 10500 Series Desk Shell 72W x 30D x 29-1/2H Select Top Laminate Color: \$(L1STD): Grd L1 Standard Laminates .LKI1: Kingswood Walnut LKI1: Kingswood Walnut HON COMPAN Tag For Office 30/72	1	469.69 1,032.00 54.49%	469.69
74	H105686X - 10500 Series Return Shell 29-1/2H x 72W x 24D Select Top Laminate Color: \$(L1STD): Grd L1 Standard Laminates .LKI1: Kingswood Walnut LKI1: Kingswood Walnut HON COMPAN Tag For Office 24/72	1	428.27 941.00 54.49%	428.27
75	H10502 - 10500 Series Floorstnd Full Ht Ped B/B/F 15-5/8W x 22-3/4D Select Laminate: \$(L1STD): Grd L1 Standard Laminates .LKI1: Kingswood Walnut	1	421.90 927.00 54.49%	421.90

THIS PRICE QUOTATION INCORPORATES, BY REFERENCE, ATMOSPHERE COMMERCIAL INTERIORS TERMS AND CONDITIONS
(July 2022 or prior contract signed by client). EXECUTION OF THIS PRICE QUOTATION IS BUYER'S ACCEPTANCE OF THOSE TERMS AND CONDITIONS.

ACCEPTED BY _____ / _____ / _____
CLIENT SIGNATURE, TITLE DATE ATMOSPHERE COMMERCIAL INTERIORS

Description		Quantity	Unit Price	Extended Price
75	HON COMPAN Tag For Office BBF			
76	H10503 - 10500 Series Lateral File Ped 36"W x 20"D x 28"H Select Laminate: \$(L1STD): Grd L1 Standard Laminates .LK11: Kingswood Walnut HON COMPAN Tag For Office LF	1	640.36 1,407.00 54.49%	640.36
77	HSC1872 - Storage Cabinet 18D x 36W x 72H Lock Opts: .L: Standard Random Key Lock Select Paint Color: \$(P1): P1 Paint Opts .S: Charcoal HON COMPAN Tag For Office 18x36x72	1	672.69 1,590.00 57.69%	672.69
78	HCT29LX - Arrnge Seated Hght X-base for 42-48" Srfc Select Paint Color: \$(P1): P1 Paint Opts .P7A: Textured Charcoal HON COMPAN Tag For Office HCT29LX	1	370.62 876.00 57.69%	370.62
79	HCTLDS - Arrange Lrg Disc Shroud for bases support 42-48" Surfaces Select Paint Color: \$(P1): P1 Paint Opts .P7A: Textured Charcoal HON COMPAN Tag For Office HCTLDS	1	82.92 196.00 57.69%	82.92
80	HCTRND42 - Arrange Table 42" Round Top Grommet Selection: .N: No Grommet Select Grade: \$(L1STD): Grd L1 Standard Laminates .LK11: Kingswood Walnut	1	279.23 660.00 57.69%	279.23

THIS PRICE QUOTATION INCORPORATES, BY REFERENCE, ATMOSPHERE COMMERCIAL INTERIORS TERMS AND CONDITIONS (July 2022 or prior contract signed by client). EXECUTION OF THIS PRICE QUOTATION IS BUYER'S ACCEPTANCE OF THOSE TERMS AND CONDITIONS.

Description		Quantity	Unit Price	Extended Price
80	Select Edgeband Color: .KI: Kingswood Walnut HON COMPAN Tag For Office 42			
81	HIWMM - Ignition 2 Task Mid-back, ilira back Control Type: .Y0: Simple Synchro-Tilt Control Select Arm Type: .A: Height and Width Adj. Arm Select Caster/Glide Option: .S: Black All-Surface Caster Select Mesh Color: .IF: 4-Way Fog Select Upholstery: \$(2): Grade 2 Uph .WP: Whisper Vinyl 04: Slate Select Lumbar: .NL: No Lumbar Select Base: .SB: Standard Base Select Frame Color: .T: Black HON COMPAN Tag For Office HIWMM	1	414.17 923.00 55.13%	414.17
82	HIGS6 - Ignition Guest/Multi-Purpose Chair Four-Leg Stacking Select Arm Type: .F: Fixed Select Caster/Glide Option: .S: All Surface Caster Select Back: .IF: 4-Way Fog Select Upholstery: \$(2): Grade 2 Uph .WP: Whisper Vinyl	4	318.59 710.00 55.13%	1,274.36

THIS PRICE QUOTATION INCORPORATES, BY REFERENCE, ATMOSPHERE COMMERCIAL INTERIORS TERMS AND CONDITIONS
 (July 2022 or prior contract signed by client). EXECUTION OF THIS PRICE QUOTATION IS BUYER'S ACCEPTANCE OF THOSE TERMS AND CONDITIONS.

Description		Quantity	Unit Price	Extended Price
82	04: Slate Select Frame Color: .CBK: Charblack HON COMPAN Tag For Office HIGS6			
Sub Total				5,054.21
ILLINOIS TAX EXEMPT				0.00
Total				5,054.21
Quiet Room				
83	HETP3536FP - Tackable Panel w/o TC 35H x 36W Fabric Selection: \$(A): Grd A Fabric .APN: Appoint 16: Nimbus Select Paint Color: \$(P1): P1 Paint Opts .S: Charcoal HON COMPAN Tag For Quiet Room 36/35	2	150.00 468.00 67.95%	300.00
84	HETP5036FP - Tackable Panel w/o TC 50H x 36W Fabric Selection: \$(A): Grd A Fabric .APN: Appoint 16: Nimbus Select Paint Color: \$(P1): P1 Paint Opts .S: Charcoal HON COMPAN Tag For Quiet Room 36/50	2	170.83 533.00 67.95%	341.66
85	HETP5048FP - Tackable Panel w/o TC 50H x 48W Fabric Selection: \$(A): Grd A Fabric .APN: Appoint 16: Nimbus	1	202.88 633.00 67.95%	202.88

THIS PRICE QUOTATION INCORPORATES, BY REFERENCE, ATMOSPHERE COMMERCIAL INTERIORS TERMS AND CONDITIONS
(July 2022 or prior contract signed by client). EXECUTION OF THIS PRICE QUOTATION IS BUYER'S ACCEPTANCE OF THOSE TERMS AND CONDITIONS.

Description		Quantity	Unit Price	Extended Price
85	Select Paint Color: \$(P1): P1 Paint Opts .S: Charcoal HON COMPAN Tag For Quiet Room 48/50			
86	HEC50PTN - 50H "T" Connector Post Select Paint Grade: \$(P1): P1 Paint Opts .S: Charcoal HON COMPAN Tag For Quiet Room CP-50-T	2	58.01 181.00 67.95%	116.02
87	HECS1 - Single Connector Strap HON COMPAN Tag For Quiet Room CS	1	7.69 24.00 67.96%	7.69
88	HECST - "T" Connector Strap HON COMPAN Tag For Quiet Room	1	11.22 35.00 67.94%	11.22
89	HECVH15P - Variable Height Connector Kit 15H Select Paint Color: \$(P1): P1 Paint Opts .S: Charcoal HON COMPAN Tag For Quiet Room VH15	2	28.21 88.00 67.94%	56.42
90	HEFEC35P - Panel Finished End Covers 35H Select Paint Color: \$(P1): P1 Paint Opts .S: Charcoal HON COMPAN Tag For Quiet Room 35E	2	24.36 76.00 67.95%	48.72
91	HEFEC50P - Panel Finished End Covers 50H Select Paint Color: \$(P1): P1 Paint Opts .S: Charcoal HON COMPAN	2	28.53 89.00 67.94%	57.06

THIS PRICE QUOTATION INCORPORATES, BY REFERENCE, ATMOSPHERE COMMERCIAL INTERIORS TERMS AND CONDITIONS
(July 2022 or prior contract signed by client). EXECUTION OF THIS PRICE QUOTATION IS BUYER'S ACCEPTANCE OF THOSE TERMS AND CONDITIONS.

ACCEPTED BY _____ / _____ / _____
CLIENT SIGNATURE, TITLE DATE ATMOSPHERE COMMERCIAL INTERIORS

Description			Quantity	Unit Price	Extended Price
91	Tag For	Quiet Room 50E			
92	HETC36 - Panel Top Cap 36"W		4	28.53	114.12
	Select Paint Color:			89.00	
	\$(P1): P1 Paint Opts			67.94%	
	.S: Charcoal				
	HON COMPAN				
	Tag For	Quiet Room TC36			
93	HETC48 - Panel Top Cap 48"W		1	32.05	32.05
	Select Paint Color:			100.00	
	\$(P1): P1 Paint Opts			67.95%	
	.S: Charcoal				
	HON COMPAN				
	Tag For	Quiet Room TC48			
94	HH871236 - Electrical Power Harness 36W 3-1 & 2-2 Systems		1	96.47	96.47
	HON COMPAN			301.00	
	Tag For	Quiet Room 36PH		67.95%	
95	HH871248 - Electrical Power Harness 48W 3-1 & 2-2 Systems		1	101.60	101.60
	HON COMPAN			317.00	
	Tag For	Quiet Room 48PH		67.95%	
96	HH871501 - Duplex Receptacle Circuit 1 3-1 & 2-2 Systems		2	20.83	41.66
	Select Duplex Color:			65.00	
	.S: Charcoal			67.95%	
	HON COMPAN				
	Tag For	Quiet Room			
97	HH879072 - Base In-Feed Cable Base 3-1 & 2-2 Systems		1	107.69	107.69
	HON COMPAN			336.00	
	Tag For	Quiet Room BIF		67.95%	
98	HWR2448P - Systems Rectangular Worksurface Edgeband 24D x 48W		2	184.29	368.58
	Select Laminate:			575.00	
	\$(L1STD): Grd L1 Standard Laminates			67.95%	
	.LKI1: Kingswood Walnut				
	Select Edgeband Color:				
	.KI: Kingswood Walnut				

THIS PRICE QUOTATION INCORPORATES, BY REFERENCE, ATMOSPHERE COMMERCIAL INTERIORS TERMS AND CONDITIONS
(July 2022 or prior contract signed by client). EXECUTION OF THIS PRICE QUOTATION IS BUYER'S ACCEPTANCE OF THOSE TERMS AND CONDITIONS.

ACCEPTED BY _____ / _____ / _____
CLIENT SIGNATURE, TITLE DATE ATMOSPHERE COMMERCIAL INTERIORS

Description	Quantity	Unit Price	Extended Price
98 Select Grommet Color: .S: Charcoal HON COMPAN Tag For Quiet Room 24/48			
99 HTLC4284 - 84"Wx42"D Rect Shaped Lam Top Edge Option: .G: 2MM/Flat .KI: Kingswood Walnut Select Grommet: .N: No Grommets Select Laminate: \$(L1STD): Grd L1 Standard Laminates .LKI1: Kingswood Walnut HON COMPAN Tag For Quiet Room 42/84	1	498.38 1,178.00 57.69%	498.38
100 HTTLEG84 - Aluminum T leg for 84" Table Tops Select Base Color: \$(P1): P1 Paint Opts .S: Charcoal HON COMPAN Tag For Quiet Room 29H	1	465.38 1,100.00 57.69%	465.38
101 HIGS6 - Ignition Guest/Multi-Purpose Chair Four-Leg Stacking Select Arm Type: .F: Fixed Select Caster/Glide Option: .S: All Surface Caster Select Back: .IF: 4-Way Fog Select Upholstery: \$(2): Grade 2 Uph .WP: Whisper Vinyl .04: Slate Select Frame Color: .CBK: Charblack HON COMPAN	4	318.59 710.00 55.13%	1,274.36

THIS PRICE QUOTATION INCORPORATES, BY REFERENCE, ATMOSPHERE COMMERCIAL INTERIORS TERMS AND CONDITIONS
(July 2022 or prior contract signed by client). EXECUTION OF THIS PRICE QUOTATION IS BUYER'S ACCEPTANCE OF THOSE TERMS AND CONDITIONS.

Description			Quantity	Unit Price	Extended Price
101	Tag For	Quiet Room HIGS6			
102	HIGS6 - Ignition Guest/Multi-Purpose Chair Four-Leg Stacking		4	302.88	1,211.52
	Select Arm Type:			675.00	
	.N: Armless			55.13%	
	Select Caster/Glide Option:				
	.S: All Surface Caster				
	Select Back:				
	.IF: 4-Way Fog				
	Select Upholstery:				
	\$(2): Grade 2 Uph				
	.WP: Whisper Vinyl				
	04: Slate				
	Select Frame Color:				
	.CBK: Charblack				
	HON COMPAN				
	Tag For	Quiet Room HIGS6			
Sub Total					5,453.48
ILLINOIS TAX EXEMPT					0.00
Total					5,453.48
Staff Office					
103	H10592 - 10500 Series Desk Shell 72W x 30D x 29-1/2H		3	469.69	1,409.07
	Select Top Laminate Color:			1,032.00	
	\$(L1STD): Grd L1 Standard Laminates			54.49%	
	.LKI1: Kingswood Walnut				
	LKI1: Kingswood Walnut				
	HON COMPAN				
	Tag For	Staff Rejuvenation Office 30/72			
104	H10502 - 10500 Series Floorstnd Full Ht Ped B/B/F 15-5/8W x 22-3/4D		3	421.90	1,265.70
	Select Laminate:			927.00	
	\$(L1STD): Grd L1 Standard Laminates			54.49%	
	.LKI1: Kingswood Walnut				
	HON COMPAN				
	Tag For	Staff Rejuvenation Office BBF			

THIS PRICE QUOTATION INCORPORATES, BY REFERENCE, ATMOSPHERE COMMERCIAL INTERIORS TERMS AND CONDITIONS
(July 2022 or prior contract signed by client). EXECUTION OF THIS PRICE QUOTATION IS BUYER'S ACCEPTANCE OF THOSE TERMS AND CONDITIONS.

ACCEPTED BY _____ / _____ / _____
CLIENT SIGNATURE, TITLE DATE ATMOSPHERE COMMERCIAL INTERIORS

Description	Quantity	Unit Price	Extended Price
105 HIWMM - Ignition 2 Task Mid-back, ilira back Control Type: .Y0: Simple Synchro-Tilt Control Select Arm Type: .A: Height and Width Adj. Arm Select Caster/Glide Option: .S: Black All-Surface Caster Select Mesh Color: .IF: 4-Way Fog Select Upholstery: \$(2): Grade 2 Uph .WP: Whisper Vinyl 04: Slate Select Lumbar: .NL: No Lumbar Select Base: .SB: Standard Base Select Frame Color: .T: Black HON COMPAN Tag For Staff Rejuvenation Office HIWMM	3	414.17 923.00 55.13%	1,242.51
106 HSC1842 - Storage Cabinet 18D x 36W x 42H Lock Opts: .L: Standard Random Key Lock Select Paint Color: \$(P1): P1 Paint Opts .S: Charcoal HON COMPAN Tag For Staff Rejuvenation Office 18x36x42	2	568.62 1,344.00 57.69%	1,137.24
107 H919436 - 36Wx18D Square Edge Laminate Top For Lateral File Select Laminate: \$(L1STD): Grd L1 Standard Laminates .LK11: Kingswood Walnut HON COMPAN Tag For Staff Rejuvenation Office Top	2	334.23 790.00 57.69%	668.46

THIS PRICE QUOTATION INCORPORATES, BY REFERENCE, ATMOSPHERE COMMERCIAL INTERIORS TERMS AND CONDITIONS
(July 2022 or prior contract signed by client). EXECUTION OF THIS PRICE QUOTATION IS BUYER'S ACCEPTANCE OF THOSE TERMS AND CONDITIONS.

Description		Quantity	Unit Price	Extended Price
Sub Total				5,722.98
ILLINOIS TAX EXEMPT				0.00
Total				5,722.98
Tariff Surcharges				
108	FEE - Estimated Tariff Surcharge for KIMBALL. May require adjustment at time of invoicing. KIMBALL	1	4,890.00 0.00 0.00%	4,890.00
Sub Total				4,890.00
ILLINOIS TAX EXEMPT				0.00
Total				4,890.00
Design & Project Management				
109	16404 - Design & Planning Services ACI DESIGN Tag For z. Design Time Design	16	85.00 0.00 0.00%	1,360.00
110	PM - Project Management Services ACI PROJEC	1	975.00 0.00 0.00%	975.00
Sub Total				2,335.00
ILLINOIS TAX EXEMPT				0.00
Total				2,335.00
111	LABOR - STRAX#: 292467-1.1 PM: Ken Mattson QTD: 5/19/25 ----- Receive, Deliver & Install furniture for Winnebago County Law Library during normal business hours. 2 Offices Law Library *Hon Stations *Kimball Phone Booths *Reception Desk ***** EMERALD BL	1	14,195.00 0.00 0.00%	14,195.00
112	WHSE - WAREHOUSE TO RECEIVE, INSPECT, AND STORE ALL PRODUCT UP TO 30 DAYS. IF AFTER 30 DAYS, ADDITIONAL STORAGE CHARGES MAY APPLY. ,	1	4,170.00 0.00 0.00%	4,170.00

THIS PRICE QUOTATION INCORPORATES, BY REFERENCE, ATMOSPHERE COMMERCIAL INTERIORS TERMS AND CONDITIONS (July 2022 or prior contract signed by client). EXECUTION OF THIS PRICE QUOTATION IS BUYER'S ACCEPTANCE OF THOSE TERMS AND CONDITIONS.

ACCEPTED BY _____ / _____ / _____
CLIENT SIGNATURE, TITLE DATE ATMOSPHERE COMMERCIAL INTERIORS

Quotation Totals	
Sub Total	132,408.20
ILLINOIS TAX EXEMPT	0.00
Grand Total	132,408.20

End of Quotation

THIS PRICE QUOTATION INCORPORATES, BY REFERENCE, ATMOSPHERE COMMERCIAL INTERIORS TERMS AND CONDITIONS
(July 2022 or prior contract signed by client). EXECUTION OF THIS PRICE QUOTATION IS BUYER'S ACCEPTANCE OF THOSE TERMS AND CONDITIONS.

ACCEPTED BY

CLIENT SIGNATURE, TITLE

/

DATE

ATMOSPHERE COMMERCIAL INTERIORS



ATMOSPHERECI.COM

Drawings and specifications provide interior design and layout plans in sufficient detail for installation of project. Designs represented by these drawings are the property of Atmosphere Commercial Interiors (ACI) and shall not be altered, used by, or disclosed to any person or firm outside the scope of this project without written permission of (ACI). Architect and Contractors shall verify and be responsible for all dimensions and conditions on the job and shall notify (ACI) of all variations from the dimensions and conditions shown. Written dimensions shall take precedence over scaled dimensions. Architects and Contractors shall be responsible for preparing demolition and construction drawings or verifying drawings provided by others. Architects and Contractors shall be responsible for supervising all demolition and constructions. Contractors shall be responsible for submitting shop drawings to (ACI) before proceeding with fabrication.

REV. #	REVISION	DATE
X	X	X

SALES TEAM
[Sales person #1, Name] [Sales person #2, Name]
[Sales person #2, Name] [Sales person #3, Name]
[Sales person #3, Name] [Sales person #4, Name]

DESIGN TEAM
[Service dealer #1, Name] [Service dealer #2, Name]
[Service dealer #2, Name] [Service dealer #3, Name]
[Service dealer #3, Name] [Service dealer #4, Name]

CLIENT APPROVAL
[Signature] APPROVED
[Signature] APPROVED AS NOTED
[Signature] REVISE & RESUBMIT
APPROVED BY & DATE

PROJECT NAME & ADDRESS
**WINNEBAGO COUNTY
LAW LIBRARY**
400 WEST STATE
ROCKFORD, IL 61101

SHEET TITLE
LAW LIBRARY FURNITURE

FILE NAME: Winnebago County IL-Law Library Only.cmrw
DRAWING DATE: 05-05-25
PROJ/ORDER #: X

PLAN
NORTH

SCALE:
1/4" = 1'-0"
SHEET
LAW LIB



Drawings and specifications provide interior design and layout plans in sufficient detail for installation of project. Designs represented by these drawings are the property of Atmosphere Commercial Interiors (ACI) and shall not be altered, used by, or disclosed to any person or firm outside the scope of this project without written permission of (ACI). Architect and Contractors shall verify and be responsible for all dimensions and conditions on the job and shall notify (ACI) of all variations from the dimensions and conditions shown. Written dimensions shall take precedence over scaled dimensions. Architects and Contractors shall be responsible for preparing demolition and construction drawings or verifying drawings provided by others. Architects and Contractors shall be responsible for supervising all demolition and constructions. Contractors shall be responsible for submitting shop drawings to (ACI) before proceeding with fabrication.

REV. #	REVISION	DATE
X	X	X

SALES TEAM
[Sales person #1, Name] [Sales person #2, Name] [Sales person #3, Name]
[Sales person #1, Name] [Sales person #2, Name] [Sales person #3, Name]

DESIGN TEAM
[Service dealer #1, Name] [Service dealer #2, Name] [Service dealer #3, Name]
[Service dealer #1, Name] [Service dealer #2, Name] [Service dealer #3, Name]

CLIENT APPROVAL
☐ APPROVED
☐ APPROVED AS NOTED
☐ REVISE & RESUBMIT
APPROVED BY & DATE

PROJECT NAME & ADDRESS
**WINNEBAGO COUNTY
LAW LIBRARY**
400 WEST STATE
ROCKFORD, IL 61101

SHEET TITLE
LAW LIBRARY FURNITURE

FILE NAME: Winnebago County IL-Law Library Only.cmrw
DRAWING DATE: 05-05-25
PROJ/ORDER #: X

PLAN NORTH

SCALE:
1/4"=1'-0"

SHEET
LAW LIB



ATMOSPHERECI.COM

Drawings and specifications provide interior design and layout plans in sufficient detail for installation of project. Designs represented by these drawings are the property of Atmosphere Commercial Interiors (ACI) and shall not be altered, used by, or disclosed to any person or firm outside the scope of this project without written permission of (ACI). Architect and Contractors shall verify and be responsible for all dimensions and conditions on the job and shall notify (ACI) of all variations from the dimensions and conditions shown. Written dimensions shall take precedence over scaled dimensions. Architects and Contractors shall be responsible for preparing demolition and construction drawings or verifying drawings provided by others. Architects and Contractors shall be responsible for supervising all demolition and constructions. Contractors shall be responsible for submitting shop drawings to (ACI) before proceeding with fabrication.

REV. #	REVISION	DATE
X	X	X

SALES TEAM
[Sales person #1, Name] [Sales person
[Sales person #2, Name] [Sales person
[Sales person #3, Name] [Sales person

DESIGN TEAM
[Service dealer #1, Name] [Service dealer
[Service dealer #2, Name] [Service dealer
[Service dealer #3, Name] [Service dealer

CLIENT APPROVAL
☐ APPROVED
☐ APPROVED AS NOTED
☐ REVISE & RESUBMIT

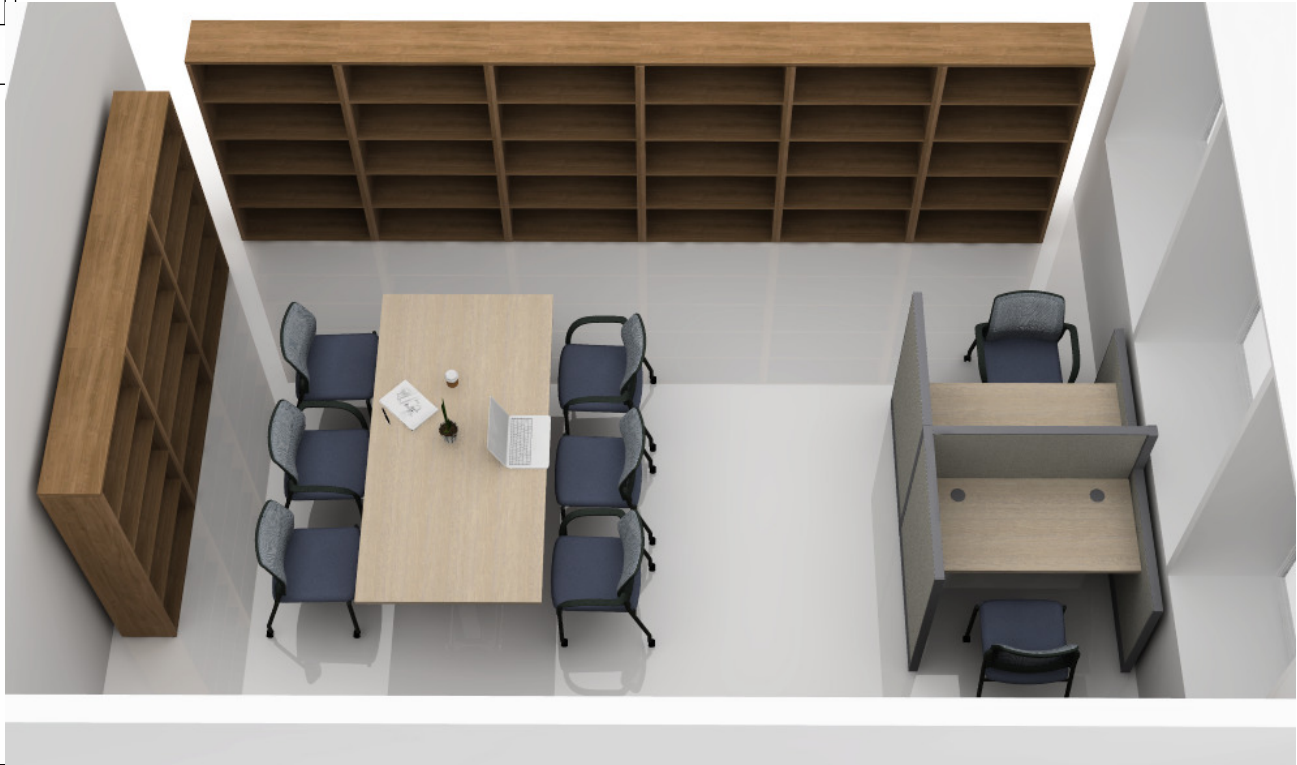
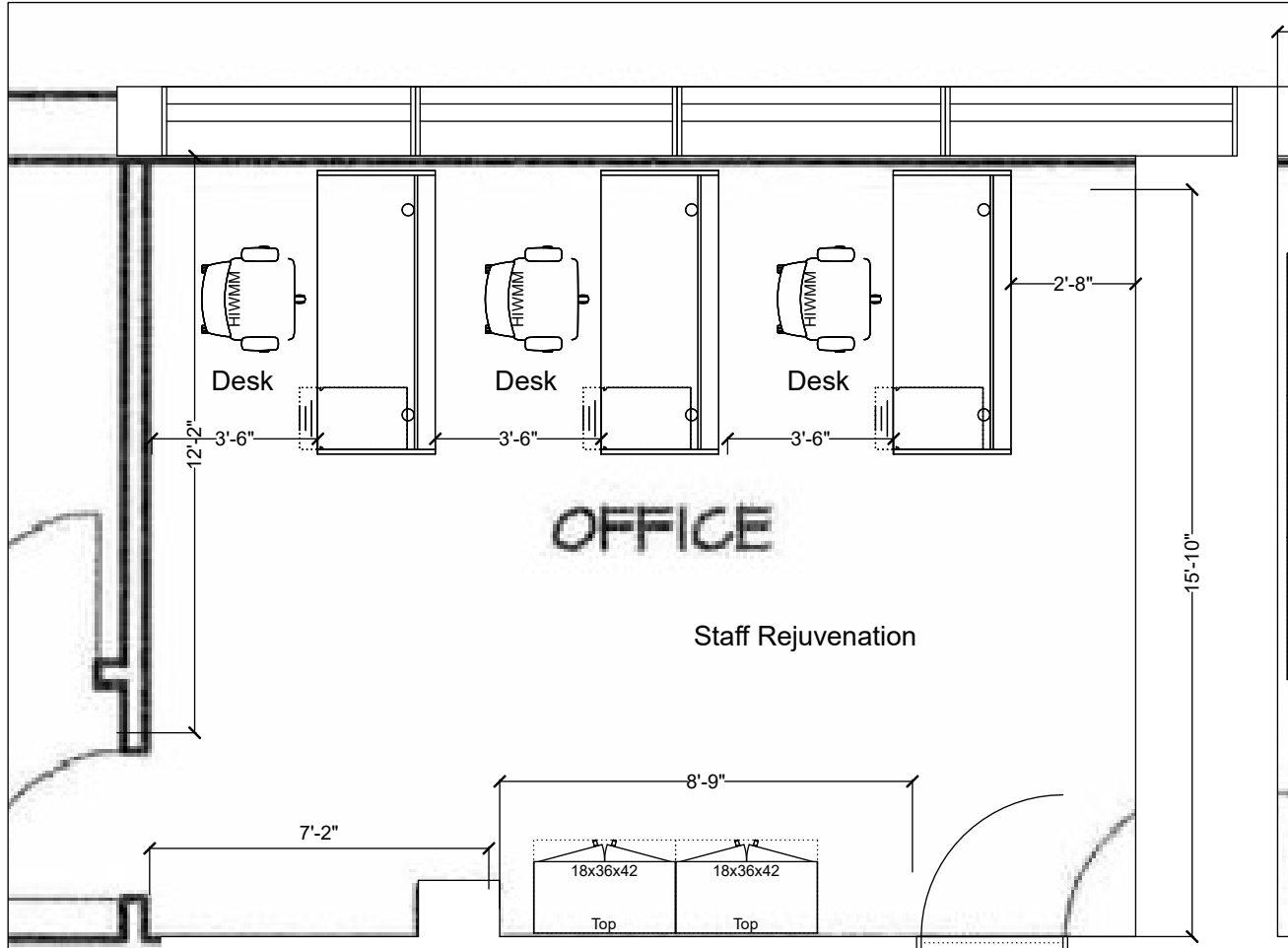
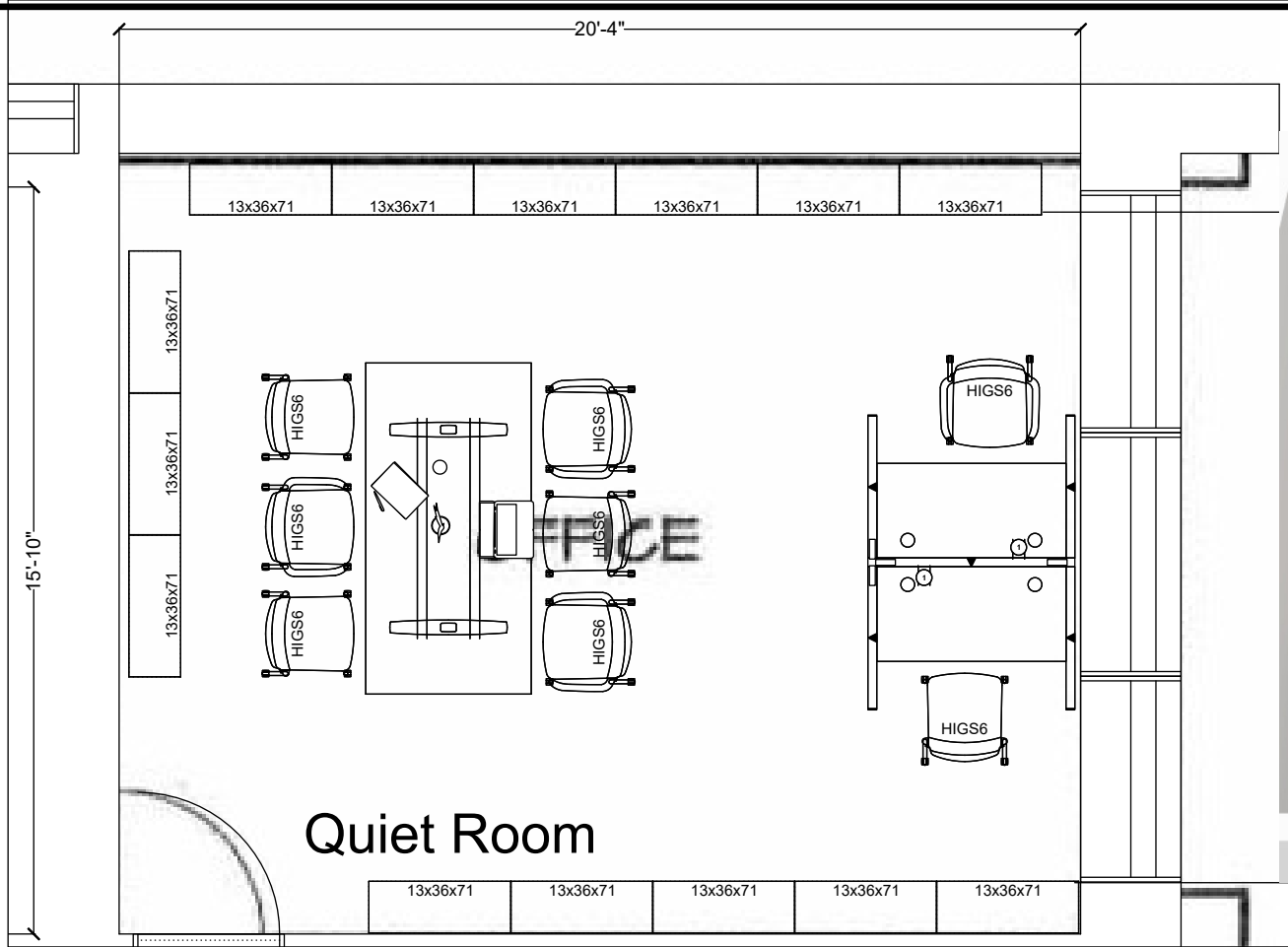
APPROVED BY & DATE

PROJECT NAME & ADDRESS WINNEBAGO COUNTY LAW LIBRARY 400 WEST STATE ROCKFORD, IL 61101	SHEET TITLE LAW LIBRARY FURNITURE
---	---

FILE NAME: Winnebago County IL-Law Library Only.cmrw
DRAWING DATE: 05-05-25
PROJ/ORDER #: X

PLAN
NORTH

SCALE:
1/4"=1'-0"
SHEET
LAW LIB



Drawings and specifications provide interior design and layout plans in sufficient detail for installation of project. Designs represented by these drawings are the property of Atmosphere Commercial Interiors (ACI) and shall not be altered, used by, or disclosed to any person or firm outside the scope of this project without written permission of (ACI). Architect and Contractors shall verify and be responsible for all dimensions and conditions on the job and shall notify (ACI) of all variations from the dimensions and conditions shown. Written dimensions shall take precedence over scaled dimensions. Architects and Contractors shall be responsible for preparing demolition and construction drawings or verifying drawings provided by others. Architects and Contractors shall be responsible for supervising all demolition and constructions. Contractors shall be responsible for submitting shop drawings to (ACI) before proceeding with fabrication.

REV. #	REVISION	DATE
X	X	X

SALES TEAM
[Sales person #1, Name] [Sales person #2, Name]
[Sales person #2, Name] [Sales person #3, Name]
[Sales person #3, Name] [Sales person #4, Name]

DESIGN TEAM
[Service dealer #1, Name] [Service dealer #2, Name]
[Service dealer #2, Name] [Service dealer #3, Name]
[Service dealer #3, Name] [Service dealer #4, Name]

CLIENT APPROVAL
☐ APPROVED
☐ APPROVED AS NOTED
☐ REVISE & RESUBMIT
APPROVED BY & DATE

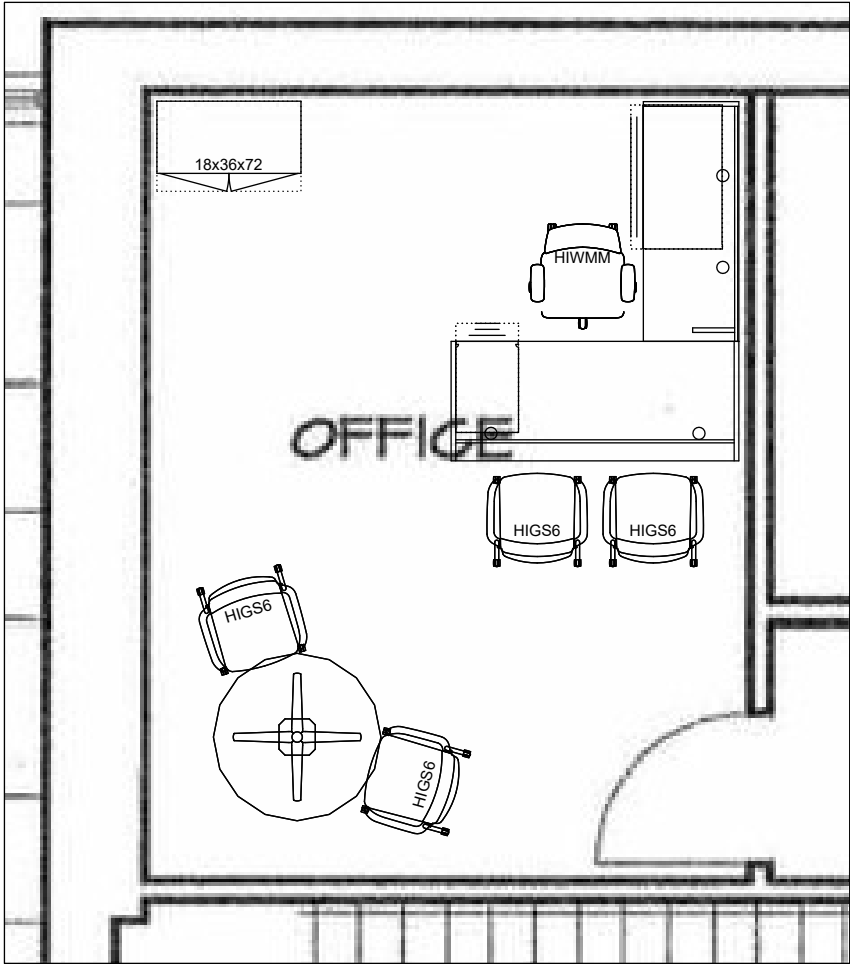
PROJECT NAME & ADDRESS
WINNEBAGO COUNTY
LAW LIBRARY
400 WEST STATE
ROCKFORD, IL 61101

SHEET TITLE
LAW LIBRARY FURNITURE

FILE NAME: Winnebago County IL-Law Library Only.cmrw
DRAWING DATE: 05-05-25
PROJ/ORDER #: X

PLAN NORTH

SCALE:
1/4"=1'-0"
SHEET
LAW LIB



Drawings and specifications provide interior design and layout plans in sufficient detail for installation of project. Designs represented by these drawings are the property of Atmosphere Commercial Interiors (ACI) and shall not be altered, used by, or disclosed to any person or firm outside the scope of this project without written permission of (ACI). Architect and Contractors shall verify and be responsible for all dimensions and conditions on the job and shall notify (ACI) of all variations from the dimensions and conditions shown. Written dimensions shall take precedence over scaled dimensions. Architects and Contractors shall be responsible for preparing demolition and construction drawings or verifying drawings provided by others. Architects and Contractors shall be responsible for supervising all demolition and constructions. Contractors shall be responsible for submitting shop drawings to (ACI) before proceeding with fabrication.

REV. #	REVISION	DATE
X	X	X

SALES TEAM	
[Sales person #1, Name]	[Sales person #2, Name]
[Sales person #2, Name]	[Sales person #3, Name]
[Sales person #3, Name]	[Sales person #4, Name]

DESIGN TEAM	
[Service dealer #1, Name]	[Service dealer #2, Name]
[Service dealer #2, Name]	[Service dealer #3, Name]
[Service dealer #3, Name]	[Service dealer #4, Name]

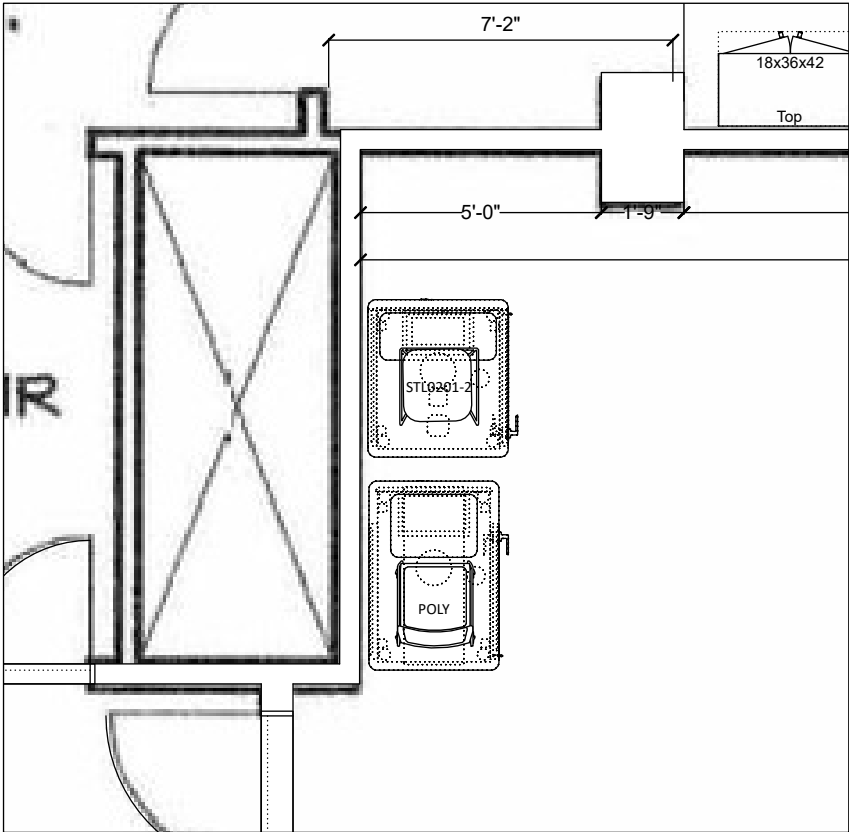
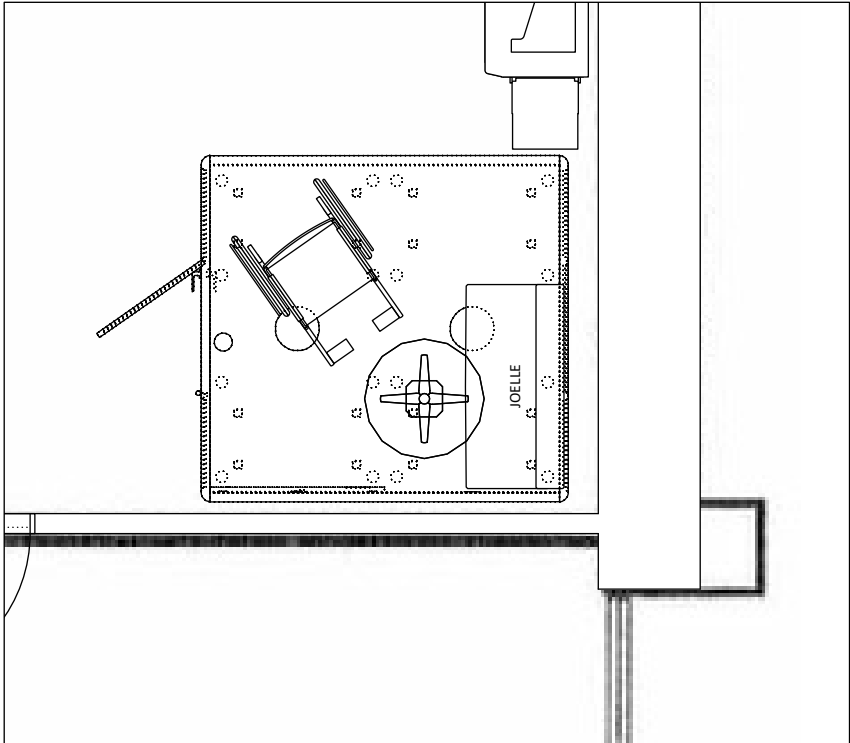
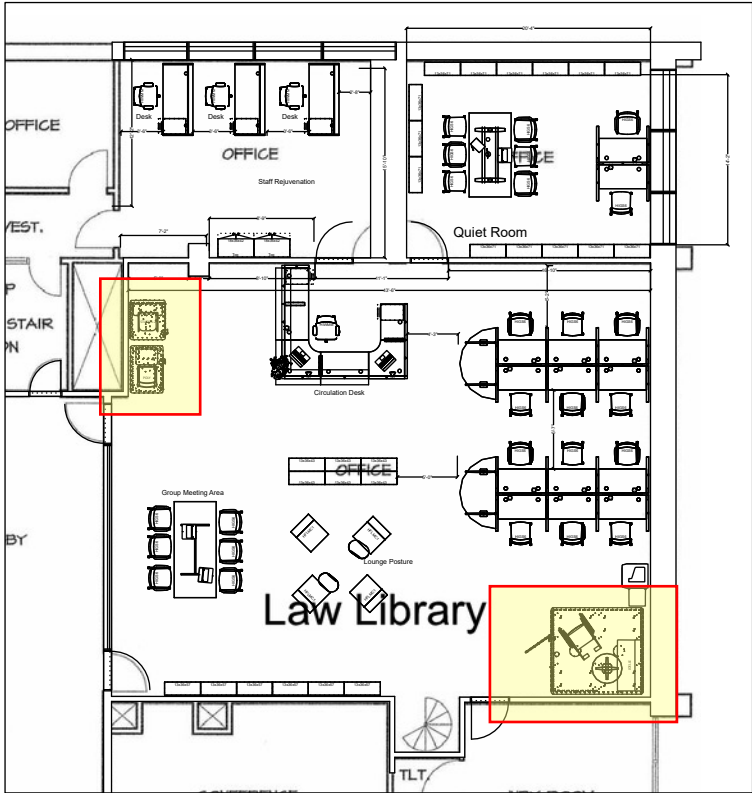
CLIENT APPROVAL	
<input type="checkbox"/>	APPROVED
<input type="checkbox"/>	APPROVED AS NOTED
<input type="checkbox"/>	REVISE & RESUBMIT

APPROVED BY & DATE

PROJECT NAME & ADDRESS	SHEET TITLE
WINNEBAGO COUNTY LAW LIBRARY 400 WEST STATE ROCKFORD, IL 61101	LAW LIBRARY FURNITURE

FILE NAME: Winnebago County IL-Law Library Only.cmrw
DRAWING DATE: 05-05-25
PROJ/ORDER #: X

PLAN NORTH	SCALE: 1/4"=1'-0"
SHEET	LAW LIB



Drawings and specifications provide interior design and layout plans in sufficient detail for installation of project. Designs represented by these drawings are the property of Atmosphere Commercial Interiors (ACI) and shall not be altered, used by, or disclosed to any person or firm outside the scope of this project without written permission of (ACI). Architect and Contractors shall verify and be responsible for all dimensions and conditions on the job and shall notify (ACI) of all variations from the dimensions and conditions shown. Written dimensions shall take precedence over scaled dimensions. Architects and Contractors shall be responsible for preparing demolition and construction drawings or verifying drawings provided by others. Architects and Contractors shall be responsible for supervising all demolition and constructions. Contractors shall be responsible for submitting shop drawings to (ACI) before proceeding with fabrication.

REV. #	REVISION	DATE
X	X	X

SALES TEAM
[Sales person #1, Name] [Sales person #2, Name] [Sales person #3, Name]
[Sales person #2, Name] [Sales person #3, Name] [Sales person #3, Name]

DESIGN TEAM
[Service dealer #1, Name] [Service dealer #2, Name] [Service dealer #3, Name]
[Service dealer #2, Name] [Service dealer #3, Name] [Service dealer #3, Name]

CLIENT APPROVAL
[] APPROVED
[] APPROVED AS NOTED
[] REVISE & RESUBMIT

APPROVED BY & DATE

PROJECT NAME & ADDRESS
**WINNEBAGO COUNTY
LAW LIBRARY**
400 WEST STATE
ROCKFORD, IL 61101

SHEET TITLE
LAW LIBRARY FURNITURE

FILE NAME: Winnebago County IL-Law Library Only.cmrw
DRAWING DATE: 05-05-25
PROJ/ORDER #: X

PLAN NORTH
SCALE: 1/4"=1'-0"
SHEET
LAW LIB