

# WINNEBAGO COUNTY PUBLIC SAFETY BUILDING - ASBESTOS ABATEMENT PROJECT



**Brownfield Environmental Engineering Resources, LLC**  
645 Third Street - Suite 250  
Beloit, Wisconsin 53511  
Phone: 608-856-5434  
www.brownfieldusa.com

Sheet No.  
G - 0

Client:  
WINNEBAGO COUNTY

Project Location:  
420 W. STATE STREET  
ROCKFORD, IL 61101

Description:  
COVER PAGE

## Revisions

Number	Date	Rev. By

Drawn By:  
BB, JB, GJ

Date:  
AUGUST 5, 2024

Project Number:  
279-001

## DRAWING INDEX

General  
Cover Sheet: G - 0  
Project Information: G - 1

Flooring Materials Assessment  
Basement Floor: ASB - 02  
First Floor: ASB - 03  
Second Floor: ASB - 04  
Third Floor: ASB - 05  
Fourth Floor: ASB - 06

Asbestos Containing Materials:  
Basement Floor: ASB - 07  
First Floor: ASB - 08  
Second Floor: ASB - 09  
Third Floor: ASB - 10  
Fourth Floor: ASB - 11  
Roof: ASB - 12



## GENERAL NOTES:

The Contractor shall follow all applicable IEPA, IDPH, EPA, and OSHA rules and regulations. The Contractor shall secure the work areas with barriers and/or lock doors with sufficient signage to isolate the work area in order to prevent access by unauthorized personnel.

The owner will be responsible for removing all movable objects from rooms or locations where abatement is scheduled.

Exterior work area preparation shall be limited to the creation of a "regulated" area using signs and barrier tape and placing critical barriers over openings into the area. Upon completion of removal activities, the work area(s) shall be HEPA vacuumed and wet wiped to remove any residual materials that may exist.

The contractor shall be responsible for investigating all areas adjacent to the abatement work areas during tear down activities. If any debris of any kind is identified in any area adjacent to the abatement work area, the Contractor shall be responsible for the cleanup of that debris utilizing HEPA-vacuuming and wet methods.

## PROJECT NOTES:

1. Water and electricity are available on each floor. It is the responsibility of the contractor to make electrical connections to existing facilities and coordinate with the owner.
2. Elevator Access/Weight Limit Specifics:
  - Elevators 8 and 9 weight limit 2500.
    - Floors: Basement, 1st, 2nd, 3rd and 4th
  - Elevator 10 weight limit 3500.
    - Floors: Basement, 1st and 2nd
  - Elevator 11 weight limit 3500.
    - Floors: 1st floor rear access, 3rd and 4th
  - Elevator 12 weight limit 3500. Prisoner elevator with dividing wall.
    - Floors: 1st ,2nd ,3rd and 4th
3. Locations of dumpsters and staging areas to be coordinated with the owner.
4. The drywall and joint compound systems have been sampled and tested and determined that as a "composite system" are less than 1% asbestos and can be considered a non-regulated asbestos containing material. The drywall joint compound as a stand-alone material contains more than 1% asbestos and should be treated as a regulated asbestos containing material.
5. Roofing materials have not been sampled or tested for asbestos.
6. Asbestos testing reports are available upon request.

## ABATEMENT NOTES:

1. The "First Mobilization" scope of work as noted in the project Bid Form is to include the removal of all asbestos and non-asbestos floor coverings, and asbestos containing mastic as noted on the plans. Asbestos containing mastic removal in the first mobilization may be completed by chemical removal or grinding methods.
2. The "Second Mobilization" scope of work is to be performed after the demolition of existing non-loadbearing walls has been completed and is to include the removal/abatement of any floor tile under the walls, existing floor leveling materials, and a final grind of all flooring surfaces to remove floor tile residue and leveling compound.
3. Floor grinding is to be completed by wet methods in a full negative air containment by licensed abatement workers. All ground material is to be disposed of as asbestos containing waste. Floors should be ground to a smooth finish free of major gouges and inconsistencies.
4. The location and extent of floor leveling materials is unknown and is not referenced on the plans. The contractor should assume leveling materials are present and are to be removed as part of the base bid scope of work.
5. Abatement of asbestos containing floor tile and mastic in the elevators is included with the first mobilization scope of work on the 4th floor. Mastic in the elevators can be abated with chemical methods and no grinding will be required.
6. All ACBM may be temporarily stored at the work area until completion of the abatement project. Temporarily stored ACBM shall meet the waste storage requirements of NESHAP regulations at 40 CFR 61, Subpart M. At the conclusion of the abatement project, all temporarily stored ACBM shall be removed from the work area and transported to a regulated landfill location approved for disposal of asbestos-containing waste.
7. The owner will provide air clearance monitoring as referenced in IL Administrative Code, Title 77, Section 855.220, d).



**Brownfield Environmental Engineering Resources, LLC**  
645 Third Street - Suite 250  
Beloit, Wisconsin 53511  
Phone: 608-856-5434  
www.brownfieldusa.com

Sheet No.

G - 1

Client:

WINNEBAGO COUNTY

Project Location:

420 W. STATE STREET  
ROCKFORD, IL 61101

Description:

PROJECT NOTES

### Revisions

Number	Date	Rev. By

Drawn By:

BB, JB, GJ

Date:

AUGUST 5, 2024

Project Number:

279-001



FT1: White w/ Beige Tile w/ Black Mastic (Tile and Mastic ACM): ~10,910 SF



-  Painted Concrete (Non-ACM)
-  Bare Concrete (Non-ACM)
-  Ceramic Tile (Non-ACM)
-  Concrete with Mastic (Mastic ACM)
-  FT1: White w/ Beige Floor Tile w/ Black Mastic (Tile and Mastic ACM)
-  FT2: Grey w/ Streaks Floor Tile w/ Black Mastic (Mastic ACM)
-  FT3: Beige Floor Tile w/ Black Mastic (Mastic ACM)
-  FT4: White w/ Blue Floor Tile (Non-ACM)
-  FT5: Green Floor Tile (Non-ACM)
-  FT6: Off-White Streak Floor Tile w/ Black Mastic (Mastic ACM)
-  FT7: Beige Floor Tile w/ Brown Mastic (Non-ACM)
-  FT8: Grey Floor Tile w/ Tan Mastic (Non-ACM)
-  FT9: White Peel & Stick Floor Tile (Non-ACM)
-  FT10: Grey Streak Floor Tile w/ Yellow Mastic (Non-ACM)
-  Carpet over Concrete or Leveling Compound

August 5, 2024

Flooring Material Assessment

Basement Floor

Sheet No. ASB - 02



Quantities were obtained by utilizing the scale provided on the drawings and are approximate. All quantities should be verified by the bidder.

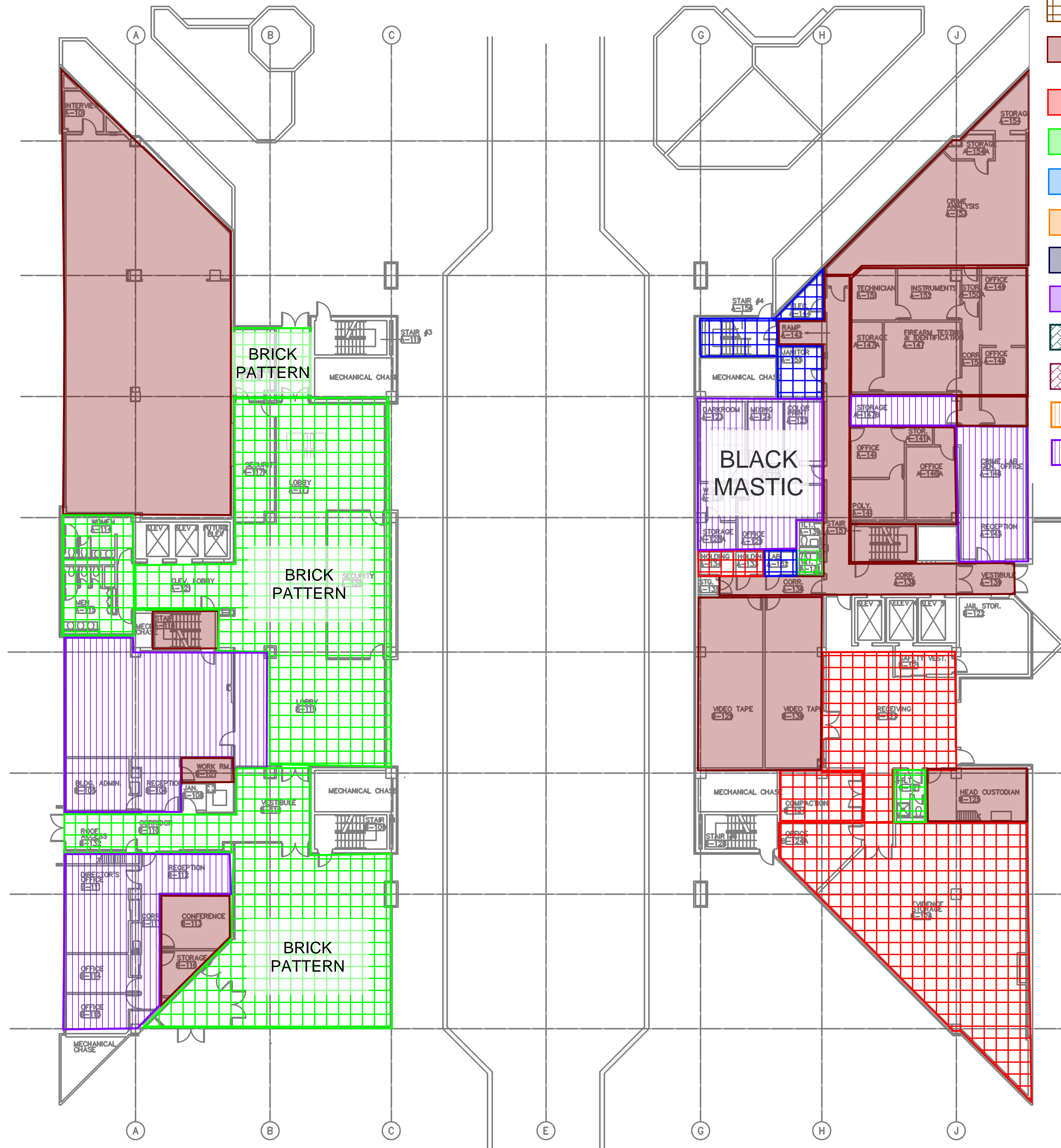




FT1: White w/ Beige Tile w/ Black Mastic (**Tile and Mastic ACM**): ~8,515 SF

Carpet over Concrete w/ Black Mastic (**Mastic ACM**): ~900 SF

-  Painted Concrete (Non-ACM)
-  Bare Concrete (Non-ACM)
-  Ceramic Tile (Non-ACM)
-  Concrete with Mastic (**Mastic ACM**)
-  FT1: White w/ Beige Floor Tile w/ Black Mastic (**Tile and Mastic ACM**)
-  FT2: Grey w/ Streaks Floor Tile w/ Black Mastic (**Mastic ACM**)
-  FT3: Beige Floor Tile w/ Black Mastic (**Mastic ACM**)
-  FT4: White w/ Blue Floor Tile (Non-ACM)
-  FT5: Green Floor Tile (Non-ACM)
-  FT6: Off-White Streak Floor Tile w/ Black Mastic (**Mastic ACM**)
-  FT7: Beige Floor Tile w/ Brown Mastic (Non-ACM)
-  FT8: Grey Floor Tile w/ Tan Mastic (Non-ACM)
-  FT9: White Peel & Stick Floor Tile (Non-ACM)
-  FT10: Grey Streak Floor Tile w/ Yellow Mastic (Non-ACM)
-  Carpet over Concrete or Leveling Compound



August 5, 2024

---

Flooring Material  
Assessment


---

First Floor

---

Sheet No. ASB - 03

---

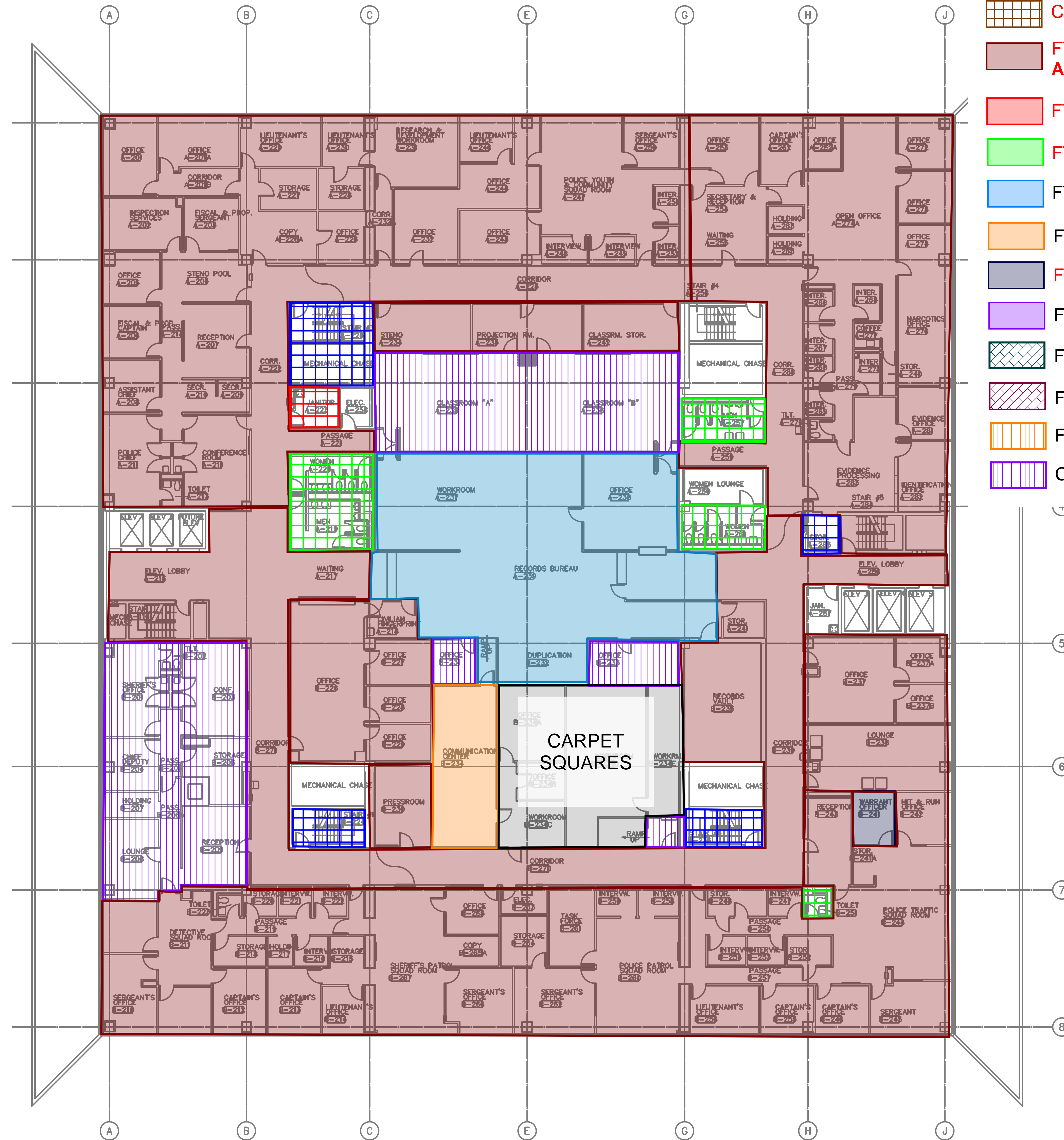


Quantities were obtained by utilizing the scale provided on the drawings and are approximate. All quantities should be verified by the bidder.



FT1: White w/ Beige Tile w/ Black Mastic (Tile and Mastic ACM): ~25,245 SF

FT6: Off-White Streak Tile w/ Black Mastic (Mastic ACM): ~110 SF



- Painted Concrete (Non-ACM)
- Bare Concrete (Non-ACM)
- Ceramic Tile (Non-ACM)
- Concrete with Mastic (Mastic ACM)
- FT1: White w/ Beige Floor Tile w/ Black Mastic (Tile and Mastic ACM)
- FT2: Grey w/ Streaks Floor Tile w/ Black Mastic (Mastic ACM)
- FT3: Beige Floor Tile w/ Black Mastic (Mastic ACM)
- FT4: White w/ Blue Floor Tile (Non-ACM)
- FT5: Green Floor Tile (Non-ACM)
- FT6: Off-White Streak Floor Tile w/ Black Mastic (Mastic ACM)
- FT7: Beige Floor Tile w/ Brown Mastic (Non-ACM)
- FT8: Grey Floor Tile w/ Tan Mastic (Non-ACM)
- FT9: White Peel & Stick Floor Tile (Non-ACM)
- FT10: Grey Streak Floor Tile w/ Yellow Mastic (Non-ACM)
- Carpet over Concrete or Leveling Compound

August 5, 2024

Flooring Material  
Assessment

Second Floor

Sheet No. ASB - 04

**BROWNFIELD**  
ENVIRONMENTAL ENGINEERING

Quantities were obtained by utilizing the scale provided on the drawings and are approximate. All quantities should be verified by the bidder.



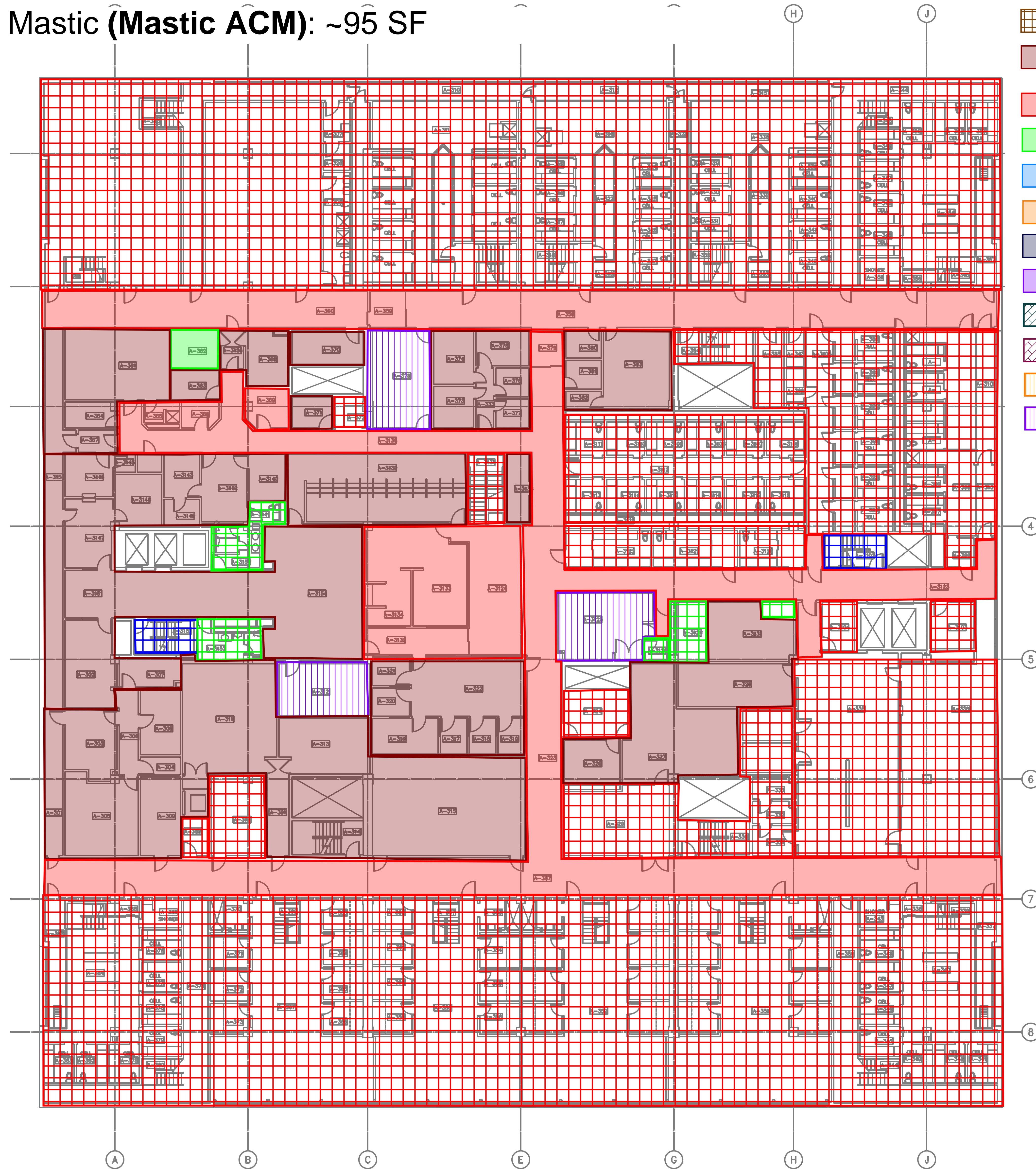


FT1: White w/ Beige Tile w/ Black Mastic (**Tile and Mastic ACM**): ~10,420 SF

FT2: Grey w/ Streaks Tile w/ Black Mastic (**Mastic ACM**): ~7,065 SF

FT3: Beige Tile w/ Black Mastic (**Mastic ACM**): ~95 SF

-  Painted Concrete (Non-ACM)
-  Bare Concrete (Non-ACM)
-  Ceramic Tile (Non-ACM)
-  Concrete with Mastic (**Mastic ACM**)
-  FT1: White w/ Beige Floor Tile w/ Black Mastic (**Tile and Mastic ACM**)
-  FT2: Grey w/ Streaks Floor Tile w/ Black Mastic (**Mastic ACM**)
-  FT3: Beige Floor Tile w/ Black Mastic (**Mastic ACM**)
-  FT4: White w/ Blue Floor Tile (Non-ACM)
-  FT5: Green Floor Tile (Non-ACM)
-  FT6: Off-White Streak Floor Tile w/ Black Mastic (**Mastic ACM**)
-  FT7: Beige Floor Tile w/ Brown Mastic (Non-ACM)
-  FT8: Grey Floor Tile w/ Tan Mastic (Non-ACM)
-  FT9: White Peel & Stick Floor Tile (Non-ACM)
-  FT10: Grey Streak Floor Tile w/ Yellow Mastic (Non-ACM)
-  Carpet over Concrete or Leveling Compound



August 5, 2024

Flooring Material  
Assessment

Third Floor

Sheet No. ASB - 05

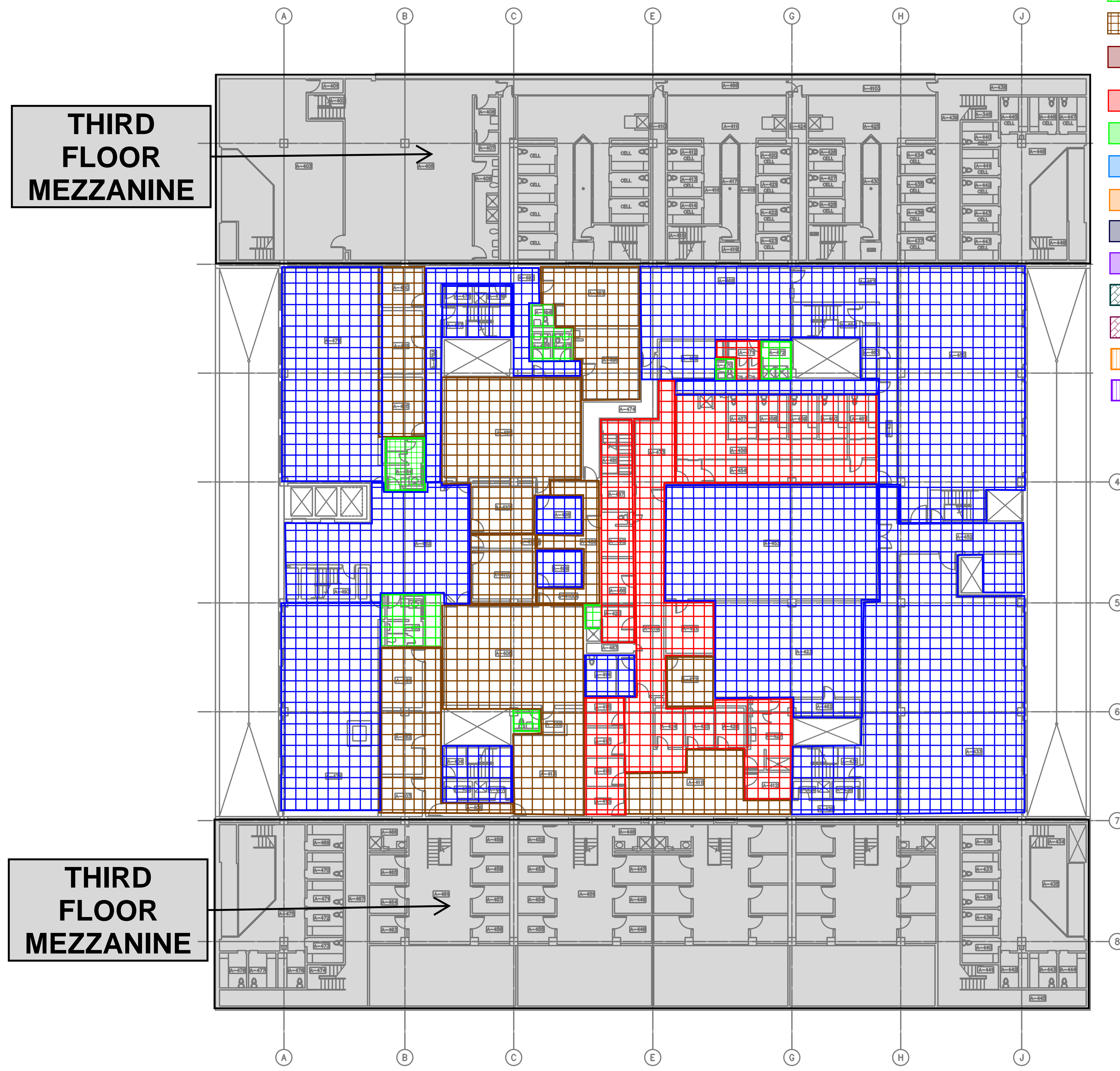
Quantities were obtained by utilizing the scale provided on the drawings and are approximate. All quantities should be verified by the bidder.





Concrete w/ Mastic (**Mastic ACM**): ~5,270 SF

-  Painted Concrete (Non-ACM)
-  Bare Concrete (Non-ACM)
-  Ceramic Tile (Non-ACM)
-  Concrete with Mastic (**Mastic ACM**)
-  FT1: White w/ Beige Floor Tile w/ Black Mastic (**Tile and Mastic ACM**)
-  FT2: Grey w/ Streaks Floor Tile w/ Black Mastic (**Mastic ACM**)
-  FT3: Beige Floor Tile w/ Black Mastic (**Mastic ACM**)
-  FT4: White w/ Blue Floor Tile (Non-ACM)
-  FT5: Green Floor Tile (Non-ACM)
-  FT6: Off-White Streak Floor Tile w/ Black Mastic (**Mastic ACM**)
-  FT7: Beige Floor Tile w/ Brown Mastic (Non-ACM)
-  FT8: Grey Floor Tile w/ Tan Mastic (Non-ACM)
-  FT9: White Peel & Stick Floor Tile (Non-ACM)
-  FT10: Grey Streak Floor Tile w/ Yellow Mastic (Non-ACM)
-  Carpet over Concrete or Leveling Compound



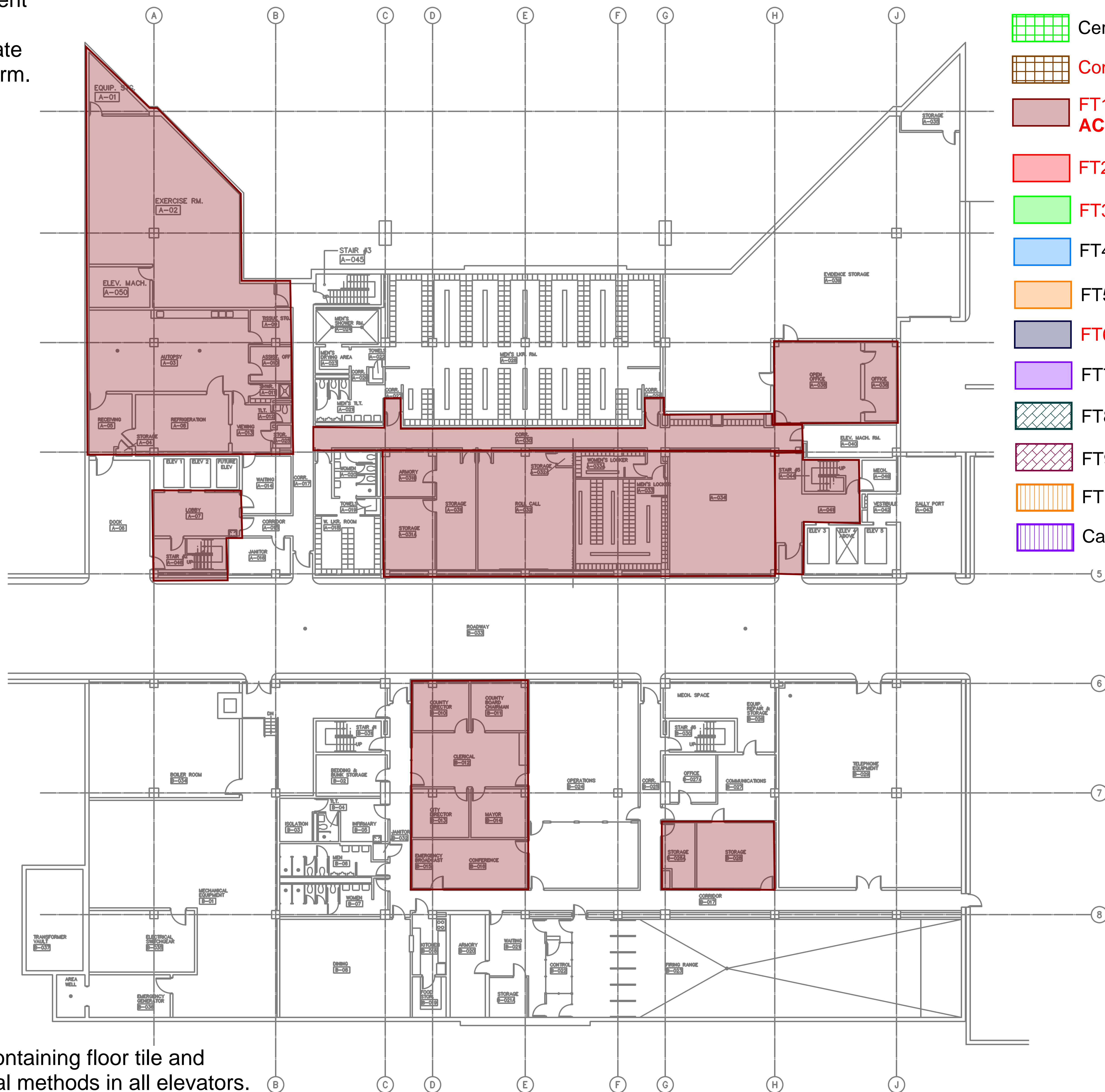
August 5, 2024
Flooring Material Assessment
Fourth Floor
Sheet No. ASB - 06

Quantities were obtained by utilizing the scale provided on the drawings and are approximate. All quantities should be verified by the bidder.



# FT1: White w/ Beige Tile w/ Black Mastic (Tile and Mastic ACM): ~10,910 SF

Note: This abatement scope of work is included as Alternate No. 1 in the Bid Form.



- Painted Concrete (Non-ACM)
- Bare Concrete (Non-ACM)
- Ceramic Tile (Non-ACM)
- Concrete with Mastic (**Mastic ACM**)
- FT1: White w/ Beige Floor Tile w/ Black Mastic (**Tile and Mastic ACM**)
- FT2: Grey w/ Streaks Floor Tile w/ Black Mastic (**Mastic ACM**)
- FT3: Beige Floor Tile w/ Black Mastic (**Mastic ACM**)
- FT4: White w/ Blue Floor Tile (Non-ACM)
- FT5: Green Floor Tile (Non-ACM)
- FT6: Off-White Streak Floor Tile w/ Black Mastic (**Mastic ACM**)
- FT7: Beige Floor Tile w/ Brown Mastic (Non-ACM)
- FT8: Grey Floor Tile w/ Tan Mastic (Non-ACM)
- FT9: White Peel & Stick Floor Tile (Non-ACM)
- FT10: Grey Streak Floor Tile w/ Yellow Mastic (Non-ACM)
- Carpet over Concrete or Leveling Compound

**August 5, 2024**

---

**Asbestos Containing Materials (ACM)**

---

**Basement Floor**

---

**Sheet No. ASB - 07**

---

Abate all asbestos containing floor tile and mastic using chemical methods in all elevators. Quantities were obtained by utilizing the scale provided on the drawings and are approximate. All quantities should be verified by the bidder.

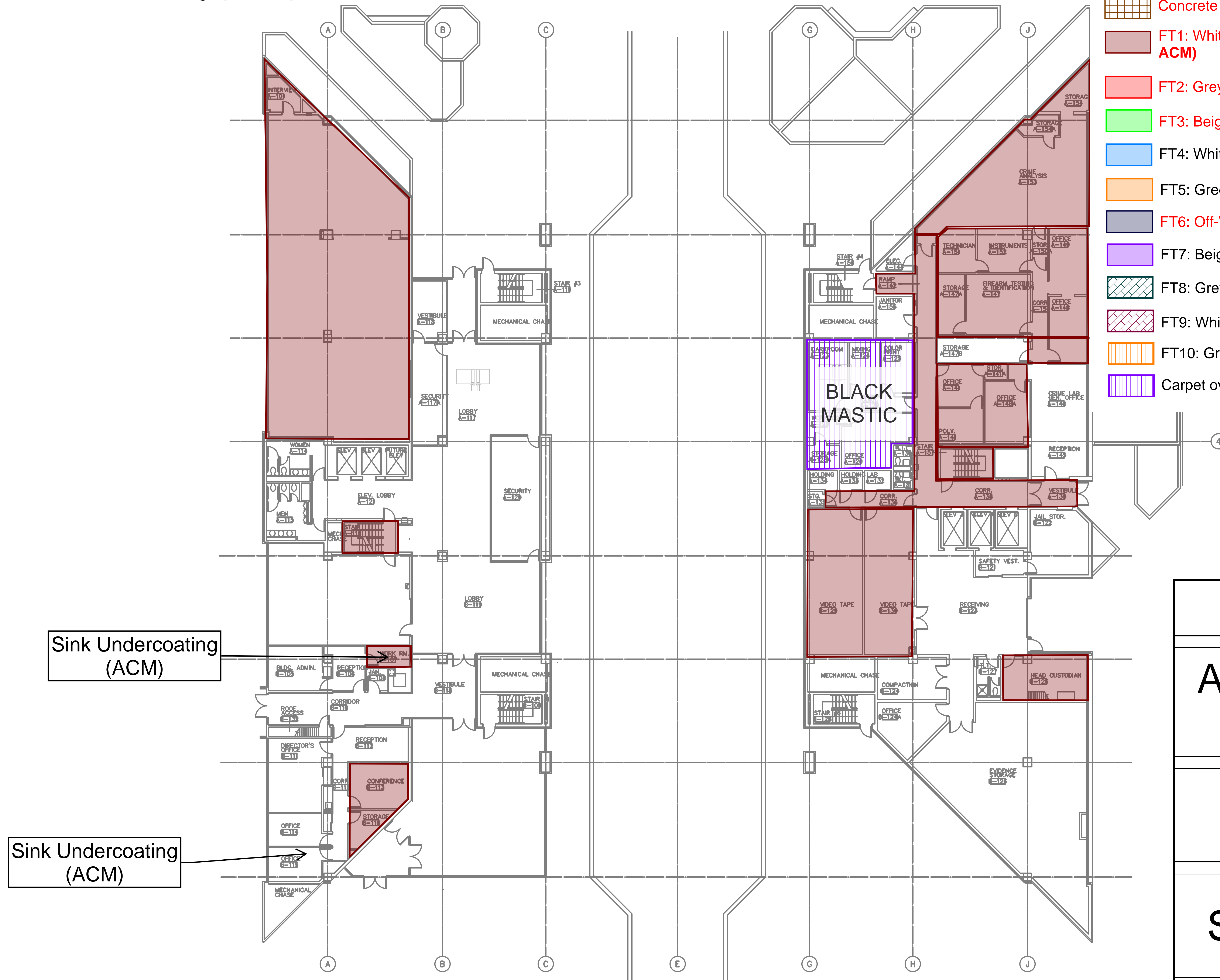


FT1: White w/ Beige Tile w/ Black Mastic (**Tile and Mastic ACM**): ~8,515 SF

Carpet over Concrete w/ Black Mastic (**Mastic ACM**): ~900 SF

Sink Undercoating (**ACM**): 2 Sinks

-  Painted Concrete (Non-ACM)
-  Bare Concrete (Non-ACM)
-  Ceramic Tile (Non-ACM)
-  Concrete with Mastic (**Mastic ACM**)
-  FT1: White w/ Beige Floor Tile w/ Black Mastic (**Tile and Mastic ACM**)
-  FT2: Grey w/ Streaks Floor Tile w/ Black Mastic (**Mastic ACM**)
-  FT3: Beige Floor Tile w/ Black Mastic (**Mastic ACM**)
-  FT4: White w/ Blue Floor Tile (Non-ACM)
-  FT5: Green Floor Tile (Non-ACM)
-  FT6: Off-White Streak Floor Tile w/ Black Mastic (**Mastic ACM**)
-  FT7: Beige Floor Tile w/ Brown Mastic (Non-ACM)
-  FT8: Grey Floor Tile w/ Tan Mastic (Non-ACM)
-  FT9: White Peel & Stick Floor Tile (Non-ACM)
-  FT10: Grey Streak Floor Tile w/ Yellow Mastic (Non-ACM)
-  Carpet over Concrete or Leveling Compound



August 5, 2024

---

Asbestos Containing  
Materials (ACM)


---

First Floor

---

Sheet No. ASB - 08

---



Quantities were obtained by utilizing the scale provided on the drawings and are approximate. All quantities should be verified by the bidder.




FT1: White w/ Beige Tile w/ Black Mastic (**Tile and Mastic ACM**): ~25,245 SF

FT6: Off-White Streak Tile w/ Black Mastic (**Mastic ACM**): ~110 SF

Sink Undercoating (**ACM**): 1 Sink



-  Painted Concrete (Non-ACM)
-  Bare Concrete (Non-ACM)
-  Ceramic Tile (Non-ACM)
-  Concrete with Mastic (**Mastic ACM**)
-  FT1: White w/ Beige Floor Tile w/ Black Mastic (**Tile and Mastic ACM**)
-  FT2: Grey w/ Streaks Floor Tile w/ Black Mastic (**Mastic ACM**)
-  FT3: Beige Floor Tile w/ Black Mastic (**Mastic ACM**)
-  FT4: White w/ Blue Floor Tile (Non-ACM)
-  FT5: Green Floor Tile (Non-ACM)
-  FT6: Off-White Streak Floor Tile w/ Black Mastic (**Mastic ACM**)
-  FT7: Beige Floor Tile w/ Brown Mastic (Non-ACM)
-  FT8: Grey Floor Tile w/ Tan Mastic (Non-ACM)
-  FT9: White Peel & Stick Floor Tile (Non-ACM)
-  FT10: Grey Streak Floor Tile w/ Yellow Mastic (Non-ACM)
-  Carpet over Concrete or Leveling Compound

August 5, 2024

---

Asbestos Containing  
Materials (ACM)


---

Second Floor

---

Sheet No. ASB - 09

---



Quantities were obtained by utilizing the scale provided on the drawings and are approximate. All quantities should be verified by the bidder.



FT1: White w/ Beige Tile w/ Black Mastic (**Tile and Mastic ACM**): ~10,420 SF

FT2: Grey w/ Streaks Tile w/ Black Mastic (**Mastic ACM**): ~7,065 SF

FT3: Beige Tile w/ Black Mastic (**Mastic ACM**): ~95 SF



-  Painted Concrete (Non-ACM)
-  Bare Concrete (Non-ACM)
-  Ceramic Tile (Non-ACM)
-  Concrete with Mastic (**Mastic ACM**)
-  FT1: White w/ Beige Floor Tile w/ Black Mastic (**Tile and Mastic ACM**)
-  FT2: Grey w/ Streaks Floor Tile w/ Black Mastic (**Mastic ACM**)
-  FT3: Beige Floor Tile w/ Black Mastic (**Mastic ACM**)
-  FT4: White w/ Blue Floor Tile (Non-ACM)
-  FT5: Green Floor Tile (Non-ACM)
-  FT6: Off-White Streak Floor Tile w/ Black Mastic (**Mastic ACM**)
-  FT7: Beige Floor Tile w/ Brown Mastic (Non-ACM)
-  FT8: Grey Floor Tile w/ Tan Mastic (Non-ACM)
-  FT9: White Peel & Stick Floor Tile (Non-ACM)
-  FT10: Grey Streak Floor Tile w/ Yellow Mastic (Non-ACM)
-  Carpet over Concrete or Leveling Compound

August 5, 2024

Asbestos Containing  
Materials (ACM)

Third Floor

Sheet No. ASB - 10

Quantities were obtained by utilizing the scale provided on the drawings and are approximate. All quantities should be verified by the bidder.





Concrete w/ Mastic (**Mastic ACM**): ~5,270 SF  
 Sink Undercoating (**ACM**): 1 Sink  
 Cloth Vibration Dampener (**ACM**): 5 Vibration Dampeners

-  Painted Concrete (Non-ACM)
-  Bare Concrete (Non-ACM)
-  Ceramic Tile (Non-ACM)
-  Concrete with Mastic (**Mastic ACM**)
-  FT1: White w/ Beige Floor Tile w/ Black Mastic (**Tile and Mastic ACM**)
-  FT2: Grey w/ Streaks Floor Tile w/ Black Mastic (**Mastic ACM**)
-  FT3: Beige Floor Tile w/ Black Mastic (**Mastic ACM**)
-  FT4: White w/ Blue Floor Tile (Non-ACM)
-  FT5: Green Floor Tile (Non-ACM)
-  FT6: Off-White Streak Floor Tile w/ Black Mastic (**Mastic ACM**)
-  FT7: Beige Floor Tile w/ Brown Mastic (Non-ACM)
-  FT8: Grey Floor Tile w/ Tan Mastic (Non-ACM)
-  FT9: White Peel & Stick Floor Tile (Non-ACM)
-  FT10: Grey Streak Floor Tile w/ Yellow Mastic (Non-ACM)
-  Carpet over Concrete or Leveling Compound

**THIRD FLOOR MEZZANINE**

2 Cloth Vibration Dampeners (ACM)

Sink Undercoating (ACM)

Cloth Vibration Dampener (ACM)

2 Cloth Vibration Dampeners (ACM)

**THIRD FLOOR MEZZANINE**

August 5, 2024

---

Asbestos Containing Materials (ACM)

---

Fourth Floor

---

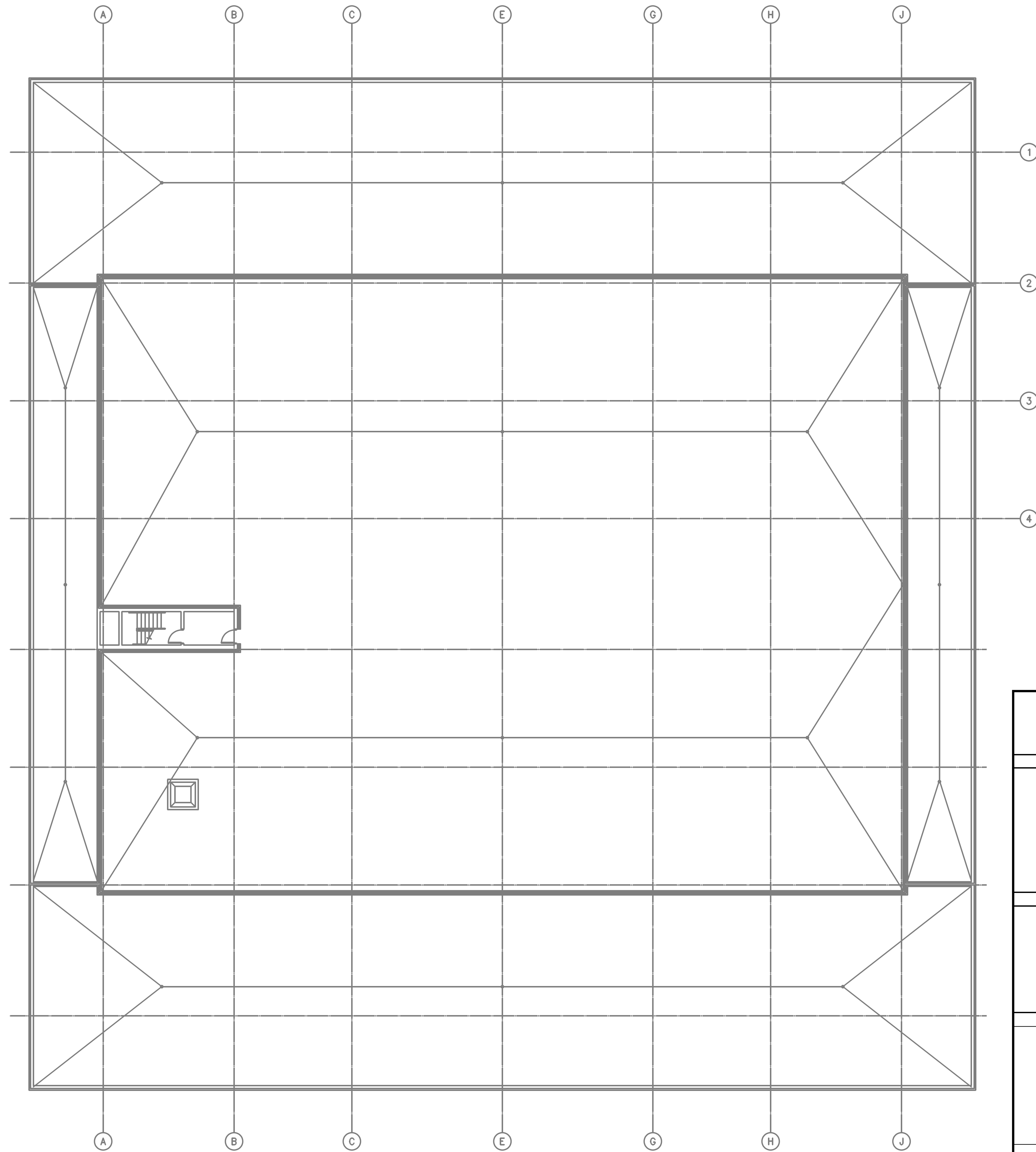
Sheet No. ASB - 11




Quantities were obtained by utilizing the scale provided on the drawings and are approximate. All quantities should be verified by the bidder.



# NO ABATEMENT



August 5, 2024
Asbestos Containing Materials (ACM)
Roof
Sheet No. ASB - 12


Quantities were obtained by utilizing the scale provided on the drawings and are approximate. All quantities should be verified by the bidder.

1 ROOF PLAN  
3/32" = 1'-0"

