



WINNEBAGO COUNTY

— ILLINOIS —

County Administration Building
404 Elm Street
Rockford, Illinois 61101

Hope Edwards
Director of Purchasing
Phone: 815-319-4380
Fax: 815-319-4381

December 13, 2024

ADDENDUM ONE
AIR DUCT CLEANING-ADMIN BUILDING
INVITATION FOR BID #24B-2378

Bidders are required to indicate on their Proposer Signature Form that they have received and acknowledged Addendum One. Find below questions that were submitted, followed by the County responses:

1. Since there are no drawings of the systems, can you please provide a count and approximate location of any VAV boxes?
Please see below attached the diagrams of the offices that have the duct heaters. They do not represent the locations. There is a total of 74.
 2. Please provide what floors and areas each of the four air handling units serve.
Please see below diagrams of the RTU's with the duct heaters they serve.
 3. Please confirm that there is no ACM above the ceilings.
There is no asbestos containing material in the entire building.
 4. Please confirm if we are to use county specific, Illinois prevailing wages for this project.
The County follows the Illinois Prevailing Wage Act (820 ILCS 130/1 et seq not the Davis-Bacon
- **Illinois Prevailing Wage Act**
Applies to public works projects funded by state or local governments. The law requires that workers are paid at least the prevailing hourly rate for similar work in the area.

- **Davis-Bacon Act**

Applies to construction projects funded by the US government or the District of Columbia. The law requires that contractors pay employees at least the prevailing wage and fringe benefits for the work. The Secretary of Labor determines the prevailing wage and fringe benefits for each locality.

5. What is the square footage of the building?

47,000

6. What is the total VAV count for the building?

There is a total of 74.

7. What is the register count per floor?

There are 45 registers on the 2nd floor that should be considered the average per floor.

8. Where you able to locate any type of floor plan, evac plan anything like that?

Please see diagrams below. This is the best I have currently available.

9. Can the cleaning of the roof top units be done during normal working hours? The day light will be better for cleaning those units.

As long as the units can remain operational during the cleaning and as long as the County employees cannot hear the work being performed or the people performing the work.

10. Will there be a spot for us to store our EQ during nonuse or will we be required to remove everything at the end of each work period?

Equipment may be stored in the basement during non-working hours.

11. Will there be parking close to the building provided?

Parking in the administration lot just to the west of the building will be available once the building is empty of County employees for the night.

12. Is there only 120volt electricity available? Is there 240v available? (dryer outlet, stove outlet etc)

There is 240vac on each floor but no receptacles.

13. Please provide the square footage of the facility/building requiring the duct cleaning.

47,000

14. Is there a schedule of Air Handlers required to be cleaned that you can provide CFM or Tonage of Each Air Handler Unit?

Each unit is 50 tons of cooling and 432,000 BTU, the units have frequency drives and have a variable CFM.

15. Please confirm that hard surfaces (e.g. Walls/Ceilings) are not required to be cut into in order to facilitate cleaning.
All ceilings are tiles that are removable, except cutting into the duct nondestructive procedures shall be followed.
16. Please confirm there are no testing or air monitoring requirements
There are no testing or air monitoring requirements.
17. Please confirm that there are no repairs or replacements required.
There are no known repairs needed for the current HVAC system, please report any deficiencies to facilities in your final report so we can get them repaired.
18. Are prevailing wage rates/Davis Bacon Wage Rates required to be used? If so, please provide.
Please see the answer to question #4.
19. What is the # of VAVs found in the Winnebago County building?
There is a total of 74.
20. Also, without any floor plans would it be possible to know the number of VAVs per floor?
Please see the diagrams below
21. Would these be traditional or fan powered VAVs?
Traditional

Any questions should be directed to the Purchasing Department, 404 Elm Street, Room 202, Rockford, IL 61101 or by phone 815-319-4380, or email purchasing@purchasing.wincoil.gov

END OF ADDENDUM ONE

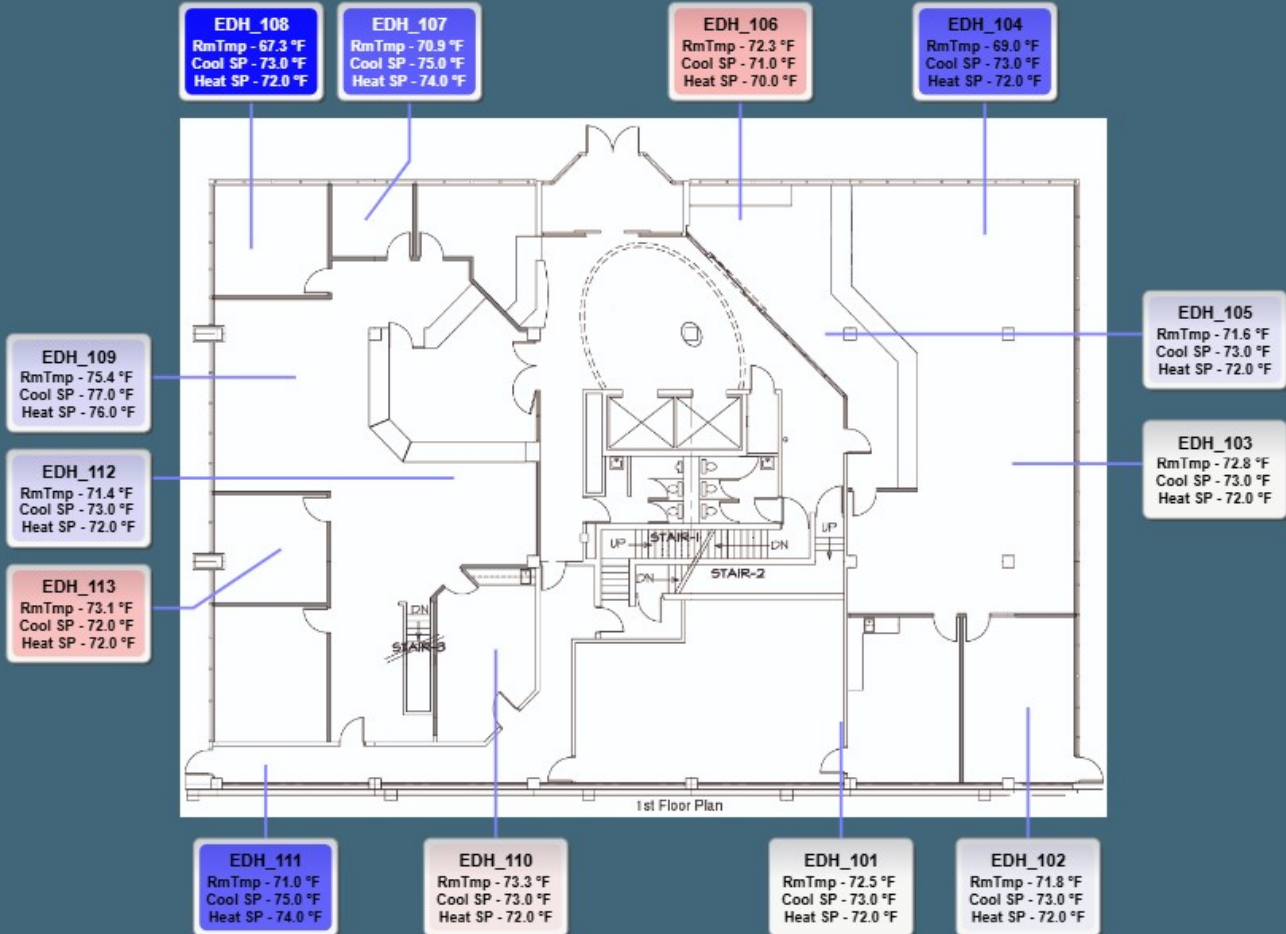
Administration Building

System Time: December 5, 2024 9:37:34 AM



- Alarms
- Schedules
- Floorplans
- RTUs
- Reheats

- Back
- First Floor Floorplan
- Forward



Administration Building

System Time: December 9, 2024 9:29:56 AM

Alarms

Schedules

Floorplans

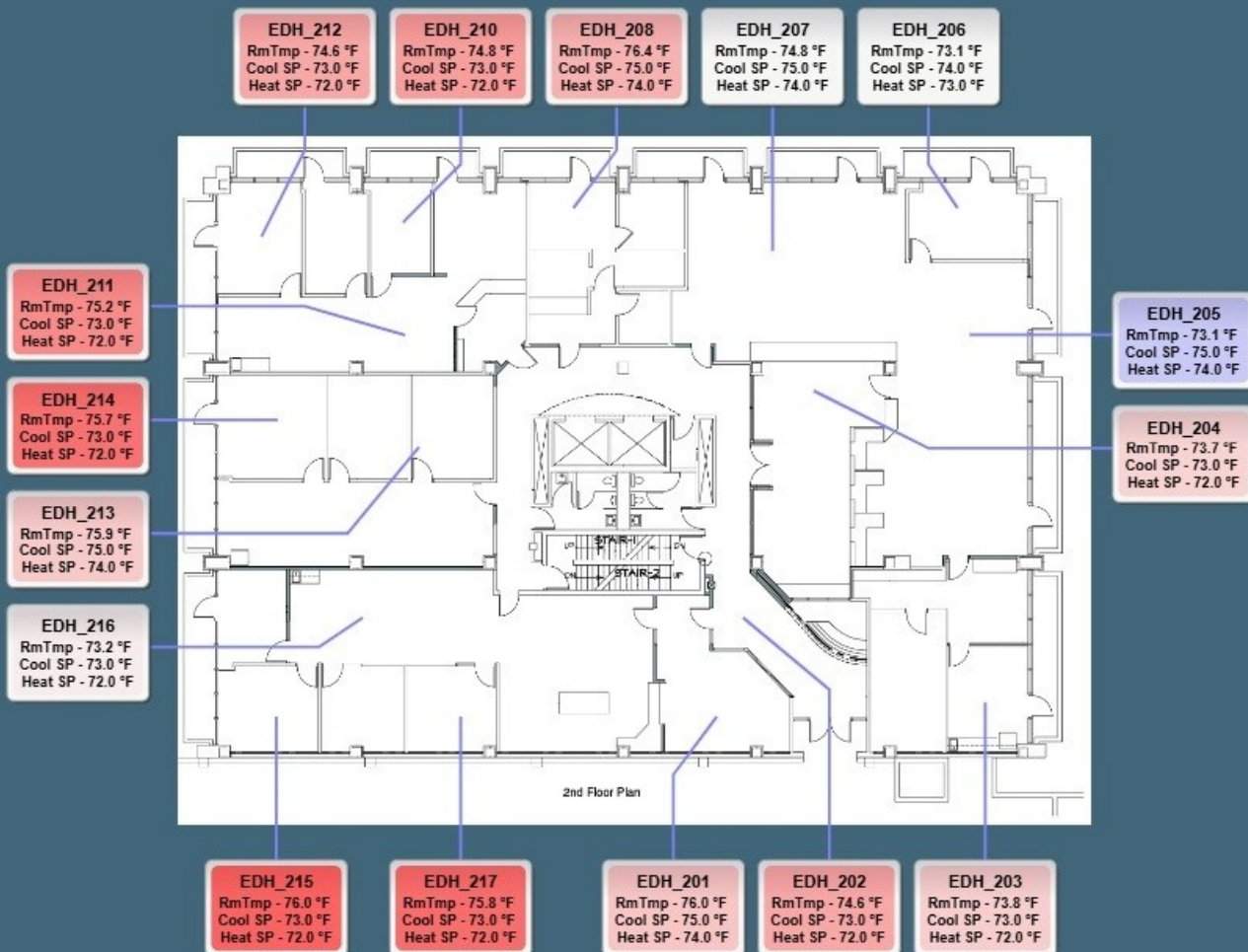
RTUs

Reheats

Back

Second Floor Floorplan

Forward

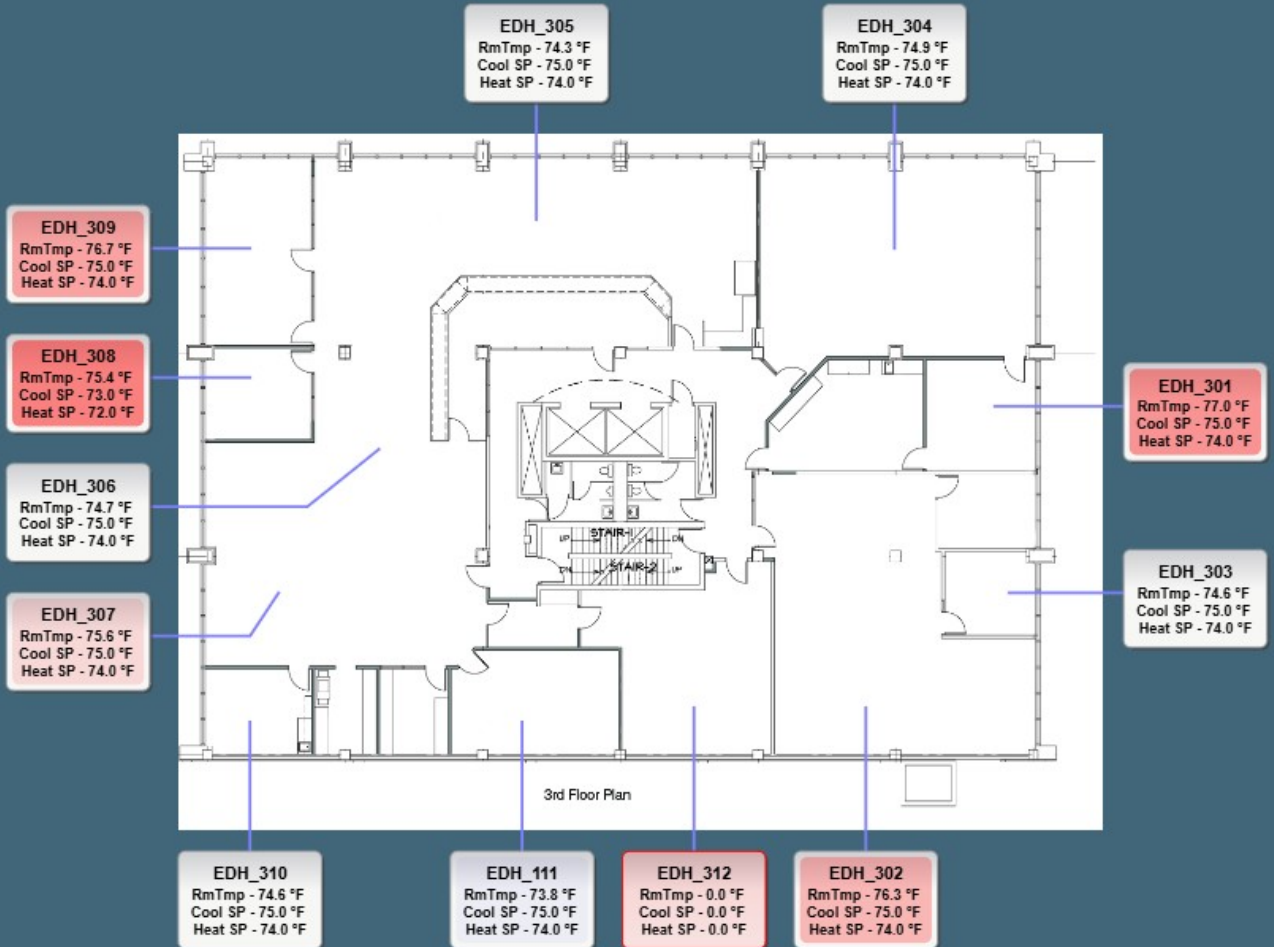


Administration Building

System Time: December 9, 2024 9:31:27 AM

- Alarms
- Schedules
- Floorplans
- RTUs
- Reheats

- Back
- Third Floor Floorplan
- Forward



Administration Building

System Time: December 9, 2024 9:32:39 AM

Outside Air Temp: 52.7

Outside Air RH: 48 %RH

Outside Air Enth: 17.0

Alarms

Schedules

Floorplans

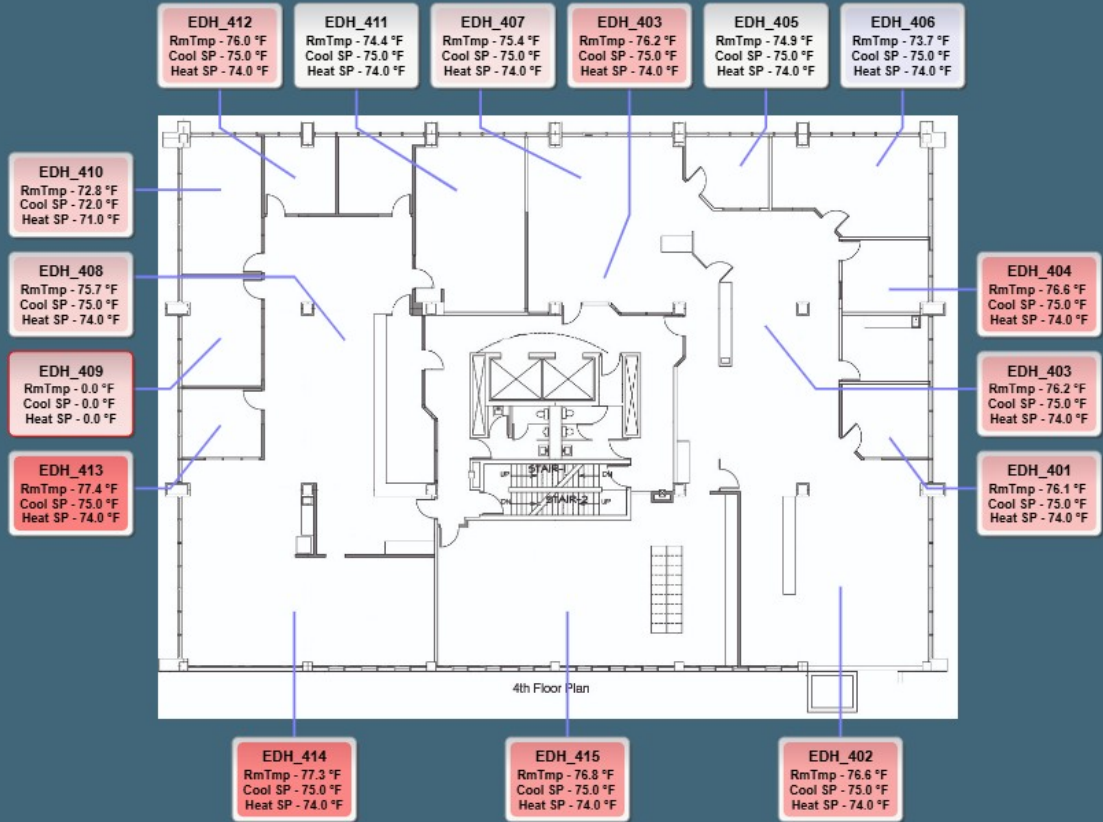
RTUs

Reheats

Back

Fourth Floor Floorplan

Forward



Administration Building

System Time: December 9, 2024 9:33:45 AM

- Alarms
- Schedules
- Floorplans
- RTUs
- Reheats

- Back
- Fifth Floor Floorplan
- Forward

- EDH_515
RmTmp - 73.3 °F
Cool SP - 73.0 °F
Heat SP - 72.0 °F
- EDH_514
RmTmp - 74.2 °F
Cool SP - 73.0 °F
Heat SP - 72.0 °F
- EDH_509
RmTmp - 73.6 °F
Cool SP - 71.0 °F
Heat SP - 70.0 °F
- EDH_508
RmTmp - 74.8 °F
Cool SP - 69.0 °F
Heat SP - 68.0 °F

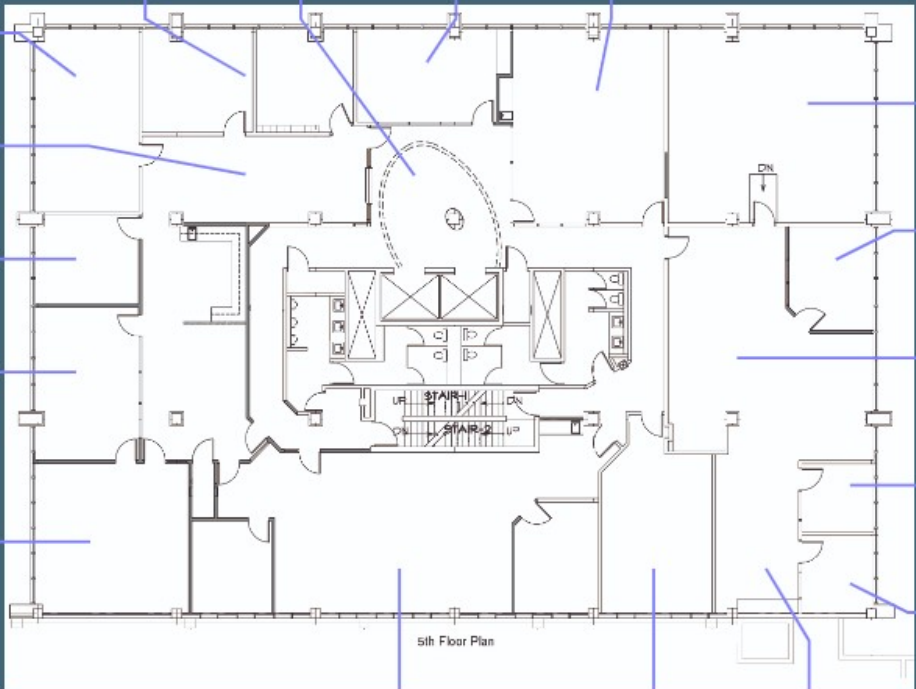
EDH_513
RmTmp - 75.4 °F
Cool SP - 71.0 °F
Heat SP - 70.0 °F

EDH_510
RmTmp - 74.6 °F
Cool SP - 73.0 °F
Heat SP - 72.0 °F

EDH_512
RmTmp - 76.8 °F
Cool SP - 73.0 °F
Heat SP - 72.0 °F

EDH_511
RmTmp - 76.5 °F
Cool SP - 72.0 °F
Heat SP - 71.0 °F

EDH_516
RmTmp - 73.1 °F
Cool SP - 72.0 °F
Heat SP - 71.0 °F



EDH_507
RmTmp - 74.4 °F
Cool SP - 73.0 °F
Heat SP - 72.0 °F

EDH_506
RmTmp - 80.1 °F
Cool SP - 77.0 °F
Heat SP - 76.0 °F

EDH_505
RmTmp - 80.3 °F
Cool SP - 73.0 °F
Heat SP - 72.0 °F

EDH_501
RmTmp - 80.6 °F
Cool SP - 73.0 °F
Heat SP - 72.0 °F

EDH_504
RmTmp - 80.4 °F
Cool SP - 69.0 °F
Heat SP - 68.0 °F

EDH_517
RmTmp - 75.2 °F
Cool SP - 73.0 °F
Heat SP - 72.0 °F

EDH_502
RmTmp - 78.5 °F
Cool SP - 73.0 °F
Heat SP - 72.0 °F

EDH_503
RmTmp - 80.2 °F
Cool SP - 73.0 °F
Heat SP - 72.0 °F

Back

RTU-01 Reheats (Table 1 of 7)

Forward

Unit Name	Unit Serves	Supply Temp	Supply Temp Spt	Heating Call	Cooling Call	OA Damper	SaFan Speed	SaFan Status	RaFan Command	Occupied Mode
RTU-01	Southwest Reheats	69.7 °F	69.8 °F	Cmd Off	Cmd Off	61 %Oa	55 % Spd	Running	Cmd On	Occupied

Temp	74.5 °F
Temp is: EDH_503	
Temp	71.2 °F
Temp is: EDH_101	
on Sts	Off

Unit Name	Unit Serves	Room Temp	Room Htg Spt	Room Clg Spt	Reheat Signal	Control Mode
EDH_101	Lounge 111 & Storage 112	71.2 °F	72.0 °F	73.0 °F	Cmd Off	Occupied
EDH_102	Office 110	71.9 °F	72.0 °F	73.0 °F	59 %	Occupied
EDH_103	Office 109	71.5 °F	72.0 °F	73.0 °F	32 %	Occupied
EDH_201	Waiting Area 220	73.7 °F	74.0 °F	75.0 °F	48 %	Occupied
EDH_202	Corridor 202	72.0 °F	72.0 °F	73.0 °F	0 %	Occupied
EDH_203	Rooms 215 & 216	71.9 °F	72.0 °F	73.0 °F	71 %	Occupied
EDH_204	Rooms 215 & 216	71.8 °F	72.0 °F	73.0 °F	4 %	Occupied
EDH_301	Offices 309 & 310 - Break Room for Wingis	74.4 °F	74.0 °F	75.0 °F	0 %	Occupied
EDH_302	Open Office Area 313	73.9 °F	74.0 °F	75.0 °F	48 %	Occupied
EDH_303	Offices 311 & 312	73.8 °F	74.0 °F	75.0 °F	17 %	Occupied
EDH_401	Office 413	73.6 °F	74.0 °F	75.0 °F	22 %	Occupied
EDH_402	Office 414	73.9 °F	74.0 °F	75.0 °F	58 %	Occupied
EDH_501	Office 516	73.0 °F	72.0 °F	73.0 °F	0 %	Occupied
EDH_502	Staff Training Area 519	72.6 °F	72.0 °F	73.0 °F	0 %	Occupied
EDH_503	Open Office 518	74.5 °F	72.0 °F	73.0 °F	0 %	Occupied
EDH_504	Offices 517	71.6 °F	68.0 °F	69.0 °F	0 %	Occupied

Back

RTU-02 Reheats (Table 2 of 7)

Forward

Unit Name	Unit Serves	Supply Temp	Supply Temp Spt	Heating Call	Cooling Call	OA Damper	SaFan Speed	SaFan Status	RaFan Command	Occupied Mode
RTU-02	Northwest Reheats	69.9 °F	69.8 °F	Cmd Off	Cmd Off	51 %Oa	55 %Spd	Running	Cmd On	Occupied

Temp 83.2 °F
 Temp is: EDH_110
 Temp 0.0 °F
 Temp is: EDH_311,
 EDH_312
 on Sts Off

Unit Name	Unit Serves	Room Temp	Room Htg Spt	Room Clg Spt	Reheat Singal	Control Mode
EDH_110	Conference Room 114	83.4 °F	72.0 °F	73.0 °F	0 %	Occupied
EDH_111	Corridor	74.1 °F	74.0 °F	75.0 °F	58 %	Occupied
EDH_112	Waiting Area 120, Tax Office 118 & File Storage 115	73.1 °F	72.0 °F	73.0 °F	0 %	Occupied
EDH_113	Office 116 & Mapping 117	71.2 °F	72.0 °F	72.0 °F	0 %	Occupied
EDH_213	Offices 229, 228, East Side of 227	73.9 °F	74.0 °F	75.0 °F	0 %	Occupied
EDH_214	Office 230 & West Side of 227	71.2 °F	72.0 °F	73.0 °F	100 %	Occupied
EDH_215	Office 224	72.0 °F	72.0 °F	73.0 °F	0 %	Occupied
EDH_216	Office 225 & 226	69.7 °F	72.0 °F	73.0 °F	100 %	Occupied
EDH_217	Offices 221, 222, 223	72.7 °F	72.0 °F	73.0 °F	0 %	Occupied
EDH_310	Break Room 324	73.8 °F	74.0 °F	75.0 °F	62 %	Occupied
EDH_311	Rooms 320, 322, 323	69.7 °F	0.0 °F	0.0 °F	0 %	Occupied
EDH_312	Rooms 319 & 321	69.7 °F	0.0 °F	0.0 °F	0 %	Occupied
EDH_413	Office 419	75.4 °F	74.0 °F	75.0 °F	0 %	Occupied
EDH_414	Offices 416, 417, 418	80.7 °F	74.0 °F	75.0 °F	0 %	Occupied
EDH_415	Open Office 415	74.9 °F	74.0 °F	75.0 °F	0 %	Occupied

Back

RTU-02 Reheats (Table 3 of 7)

Forward

Unit Name	Unit Serves	Supply Temp	Supply Temp Spt	Heating Call	Cooling Call	OA Damper	SaFan Speed	SaFan Status	RaFan Command	Occupied Mode
RTU-02	Northwest Reheats	69.8 °F	69.6 °F	Cmd Off	Cmd Off	52 %Oa	55 %Spd	Running	Cmd On	Occupied

m Temp	84.2 °F
Temp is: EDH_110	
n Temp	0.0 °F
Temp is: EDH_311,	
EDH_312	
ttion Sts	Off

Unit Name	Unit Serves	Room Temp	Room Htg Spt	Room Clg Spt	Reheat Signal	Control Mode
EDH_516	Chairman's Office	71.0 °F	71.0 °F	72.0 °F	45 %	Occupied
EDH_517	Office 522	72.7 °F	72.0 °F	73.0 °F	0 %	Occupied

Back

RTU-03 Reheats (Table 4 of 7)

Forward

Unit Name	Unit Serves	Supply Temp	Supply Temp Spt	Heating Call	Cooling Call	OA Damper	SaFan Speed	SaFan Status	RaFan Command	Occupied Mode
RTU-03	Southeast Reheats	69.8 °F	69.8 °F	Cmd Off	Cmd Off	47 %Oa	70 %Spd	Running	Cmd On	Occupied

n Temp	75.8 °F
Temp is: EDH_109	
Temp	0.0 °F
Temp is: EDH_409	
ion Sts	Off

Unit Name	Unit Serves	Room Temp	Room Htg Spt	Room Clg Spt	Reheat Signal	Control Mode
EDH_107	Absentee Voting 122 & Information Office 123	73.9 °F	74.0 °F	75.0 °F	55 %	Occupied
EDH_108	Office 121	71.8 °F	72.0 °F	73.0 °F	40 %	Occupied
EDH_109	Office 119	75.8 °F	76.0 °F	77.0 °F	4 %	Occupied
EDH_208	Offices 206 & 207	74.0 °F	74.0 °F	75.0 °F	50 %	Occupied
EDH_209	Office 205 & Elevator Lobby 200	71.5 °F	72.0 °F	73.0 °F	46 %	Occupied
EDH_210	Rooms 233, 234, 235	73.4 °F	72.0 °F	73.0 °F	0 %	Occupied
EDH_211	Office 231	72.7 °F	72.0 °F	73.0 °F	0 %	Occupied
EDH_212	Office 232	72.1 °F	72.0 °F	73.0 °F	36 %	Occupied
EDH_306	Waiting Area 306	72.8 °F	74.0 °F	75.0 °F	100 %	Occupied
EDH_307	Open Office 325	74.0 °F	74.0 °F	75.0 °F	42 %	Occupied
EDH_308	Open Office 326	72.6 °F	72.0 °F	73.0 °F	0 %	Occupied
EDH_309	Office 327	72.2 °F	74.0 °F	75.0 °F	100 %	Occupied
EDH_408	Office 421	72.9 °F	74.0 °F	75.0 °F	100 %	Occupied
EDH_409	Conference Room 422	0.0 °F	0.0 °F	0.0 °F	0 %	Occupied
EDH_410	Office 423	72.8 °F	71.0 °F	72.0 °F	0 %	Occupied

Back

RTU-03 Reheats (Table 5 of 7)

Forward

Unit Name	Unit Serves	Supply Temp	Supply Temp Spt	Heating Call	Cooling Call	OA Damper	SaFan Speed	SaFan Status	RaFan Command	Occupied Mode
RTU-03	Southeast Reheats	69.8 °F	69.9 °F	Cmd Off	Cmd Off	47 %Oa	70 %Spd	Running	Cmd On	Occupied

Temp 75.8 °F
 Temp is: EDH_109
 Temp 0.0 °F
 Temp is: EDH_409
 on Sts Off

Unit Name	Unit Serves	Room Temp	Room Htg Spt	Room Clg Spt	Reheat Signal	Control Mode
EDH_411	Open Office 426	73.1 °F	74.0 °F	75.0 °F	100 %	Occupied
EDH_412	Office 424	74.0 °F	74.0 °F	75.0 °F	54 %	Occupied
EDH_510	Open Office 533	70.9 °F	72.0 °F	73.0 °F	100 %	Occupied
EDH_511	Chairman's Conference Room	71.0 °F	71.0 °F	72.0 °F	14 %	Occupied
EDH_512	Office 529	72.0 °F	72.0 °F	73.0 °F	47 %	Occupied
EDH_513	Office 530	70.1 °F	70.0 °F	71.0 °F	0 %	Occupied
EDH_514	Elevator Lobby	72.9 °F	72.0 °F	73.0 °F	0 %	Occupied
EDH_515	Offices 527, 528, 531, 532	71.9 °F	72.0 °F	73.0 °F	58 %	Occupied

Back

RTU-04 Reheats (Table 6 of 7)

Forward

Unit Name	Unit Serves	Supply Temp	Supply Temp Spt	Heating Call	Cooling Call	OA Damper	SaFan Speed	SaFan Status	RaFan Command	Occupied Mode
RTU-04	Northeast Reheats	69.7 °F	70.0 °F	Cmd Off	Cmd Off	72 %Oa	50 %Spd	Running	Cmd On	Occupied

n Temp	76.5 °F
Temp is:	EDH_505
n Temp	70.8 °F
Temp is:	EDH_406
ton Sts	Off

Unit Name	Unit Serves	Room Temp	Room Htg Spt	Room Clg Spt	Reheat Signal	Control Mode
EDH_104	NE Corner of Room 108	70.9 °F	72.0 °F	73.0 °F	100 %	Occupied
EDH_105	Office 109	72.3 °F	72.0 °F	73.0 °F	2 %	Occupied
EDH_106	Office 107	71.2 °F	70.0 °F	71.0 °F	0 %	Occupied
EDH_205	Office Area 214	71.5 °F	74.0 °F	75.0 °F	100 %	Occupied
EDH_206	Office 212	72.4 °F	73.0 °F	74.0 °F	76 %	Occupied
EDH_207	Office 211	73.6 °F	74.0 °F	75.0 °F	100 %	Occupied
EDH_304	Conference Room 308	72.9 °F	74.0 °F	75.0 °F	100 %	Occupied
EDH_305	Open Office 328 & Elevator Lobby	72.4 °F	74.0 °F	75.0 °F	100 %	Occupied
EDH_403	Open Office 410, Training Area 406 & Elevator Lobby	74.1 °F	74.0 °F	75.0 °F	0 %	Occupied
EDH_404	Room 411 & Breakroom 412	72.0 °F	74.0 °F	75.0 °F	100 %	Occupied
EDH_405	Office 408	73.4 °F	74.0 °F	75.0 °F	100 %	Occupied
EDH_406	Office 409	70.8 °F	74.0 °F	75.0 °F	100 %	Occupied
EDH_407	Open Office 407	73.3 °F	74.0 °F	75.0 °F	100 %	Occupied
EDH_505	Offices 513 & 514	76.5 °F	72.0 °F	73.0 °F	0 %	Occupied
EDH_506	Office 512 & Open Office 515	76.2 °F	76.0 °F	77.0 °F	58 %	Occupied

[Back](#)

RTU-04 Reheats (Table 7 of 7)

[Forward](#)

Unit Name	Unit Serves	Supply Temp	Supply Temp Spt	Heating Call	Cooling Call	OA Damper	SaFan Speed	SaFan Status	RaFan Command	Occupied Mode
RTU-04	Northeast Reheats	69.8 °F	70.0 °F	Cmd Off	Cmd Off	72 %Oa	50 %Spd	Running	Cmd On	Occupied

Temp	76.5 °F
Temp is: EDH_505	
Temp	70.8 °F
Temp is: EDH_406	
on Sts	Off

Unit Name	Unit Serves	Room Temp	Room Htg Spt	Room Clg Spt	Reheat Signal	Control Mode
EDH_507	Network Room 511	73.3 °F	72.0 °F	73.0 °F	0 %	Occupied
EDH_508	Conference 510	72.1 °F	68.0 °F	69.0 °F	0 %	Occupied
EDH_509	Conference 509	71.3 °F	70.0 °F	71.0 °F	0 %	Occupied