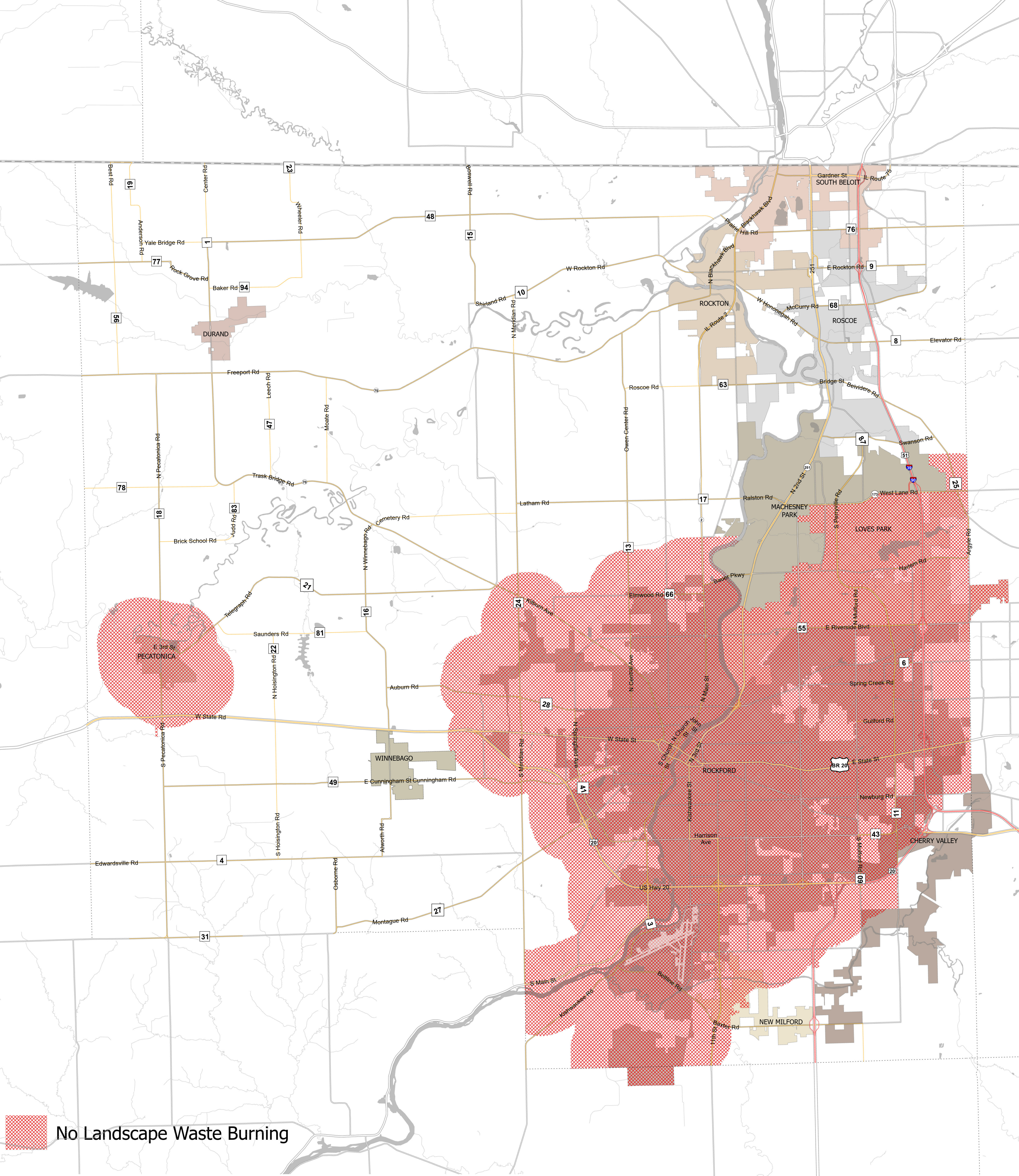


# Winnebago County

## No Burn Locations



Areas Affected by Landscape Waste Burning Regulations in Winnebago County

### PURPOSE

This map was created to portray areas in unincorporated Winnebago County affected by landscape waste burning regulations. For the purpose of these regulations, "landscape waste" is defined as all accumulations of grass or shrubbery cuttings, leaves, flowers, and weeds.

### CRITERIA

Areas of unincorporated Winnebago County considered for landscape waste burning restrictions include any of the following:

- a) areas wholly surrounded by one or more municipalities not allowing landscape waste open burning;
- b) a mobile home park completely or partially within one mile of any municipality not allowing landscape waste open burning;
- c) any platted subdivision completely or partially within one mile of any municipality not allowing landscape waste open burning;
- d) any platted subdivision or mobile home park adjacent to a subdivision or mobile home park completely or partially within one mile of any municipality not allowing landscape waste open burning

This map was compiled by WinGIS (Sarah Stromberg) on 4/2/2025. WinGIS make no warranties, either expressed or implied as to any other matter whatsoever,