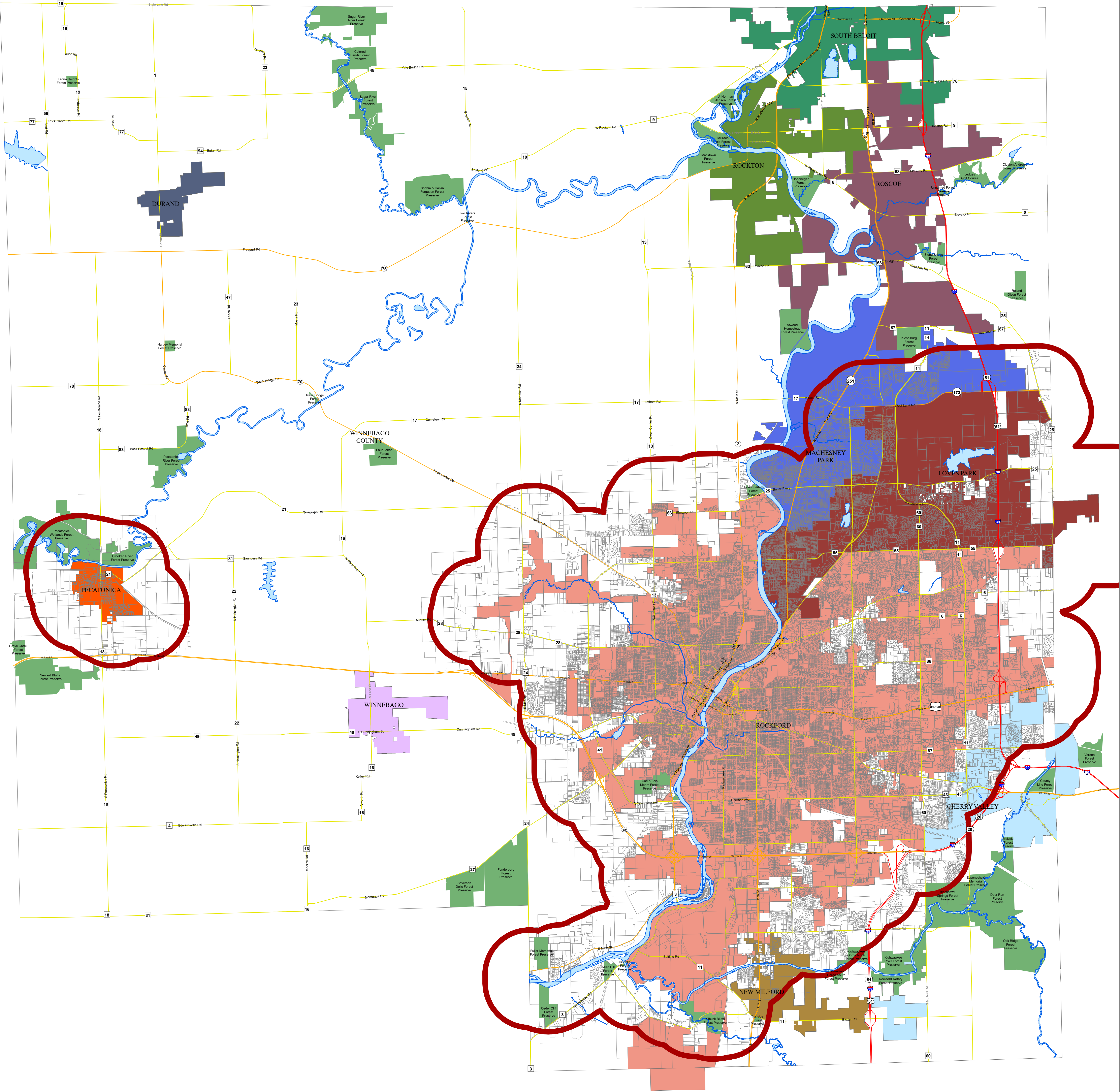


Winnebago County

No Burn Locations



Areas Affected by Landscape Waste Burning Regulations in Winnebago County

PURPOSE
This map was created to portray areas in unincorporated Winnebago County affected by landscape waste burning regulations. For the purpose of these regulations, "landscape waste" is defined as all accumulations of grass or shrubbery cuttings, leaves, flowers, and weeds.

CRITERIA
Areas of unincorporated Winnebago County considered for landscape waste burning restrictions include any of the following:
a) areas wholly surrounded by one or more municipalities not allowing landscape waste open burning;
b) a mobile home park completely or partially within one mile of any municipality not allowing landscape waste open burning;
c) any platted subdivision completely or partially within one mile of any municipality not allowing landscape waste open burning;
d) any platted subdivision or mobile home park adjacent to a subdivision or mobile home park completely or partially within one mile of any municipality not allowing landscape waste open burning.

No Burn Buffer - 1 mile
Parcels within the No Burn Buffer

0 0.75 1.5 3 Miles

This map was compiled by WinGIS (Sarah Stromberg) on 12/9/2022. WinGIS make no warranties, either expressed or implied as to any other matter whatsoever, including, without limitation, the condition of the map or its fitness for any particular purpose. The burden for determining fitness for use lies entirely with the user.