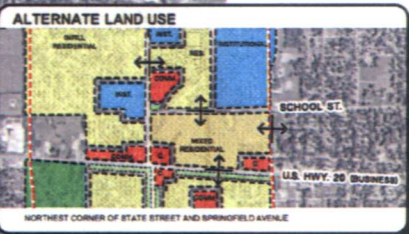
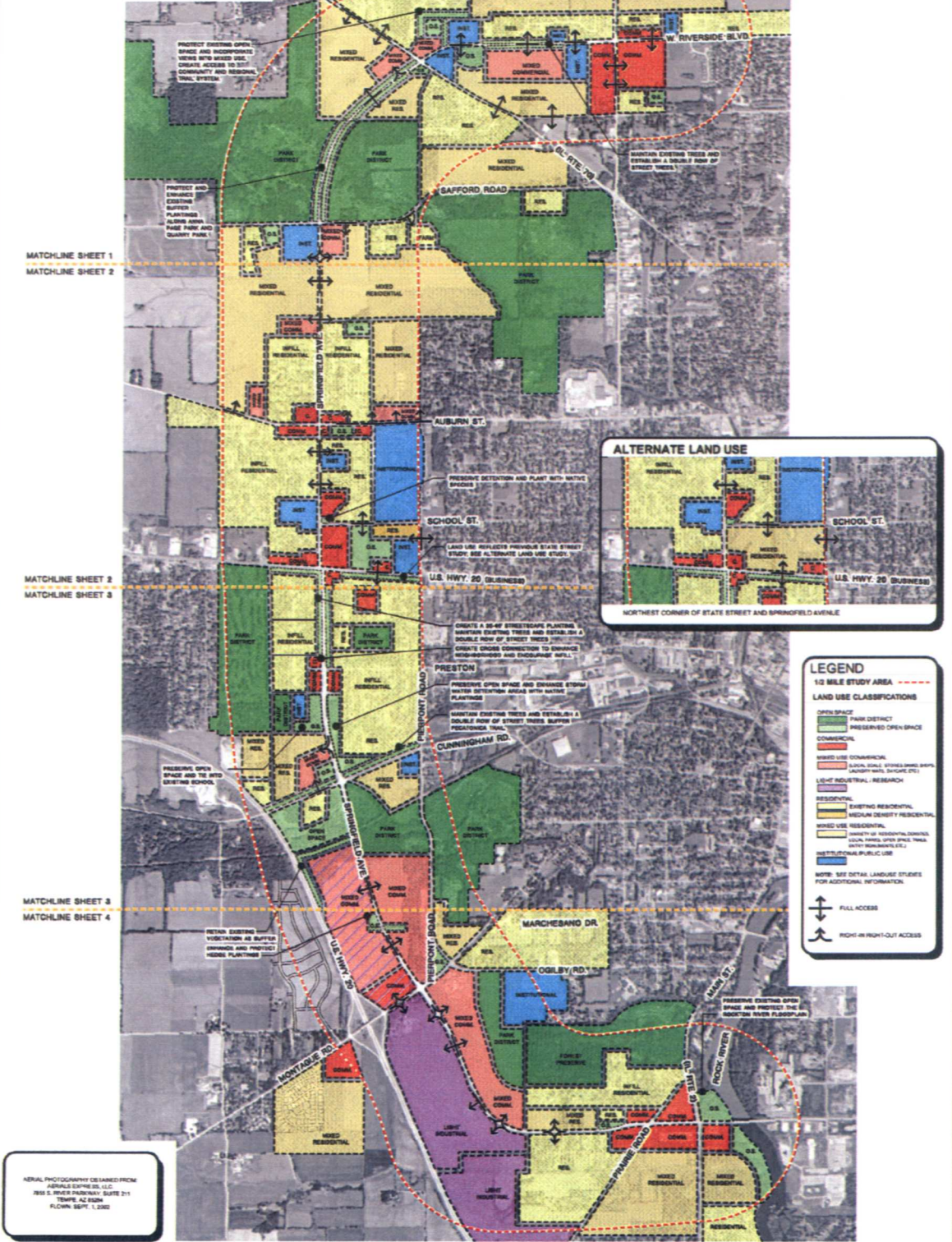


SPRINGFIELD CORRIDOR



LEGEND

1/2 MILE STUDY AREA - - - - -

LAND USE CLASSIFICATIONS

- OPEN SPACE
- PARK DISTRICT
- PRESERVED OPEN SPACE
- COMMERCIAL
- MIXED USE COMMERCIAL
- LOW DENSITY RESIDENTIAL
- MEDIUM DENSITY RESIDENTIAL
- HIGH DENSITY RESIDENTIAL
- INDUSTRIAL
- UNDEVELOPED PUBLIC USE

NOTE: SEE DETAIL LANDUSE STUDIES FOR ADDITIONAL INFORMATION.

↑ FULL ACCESS

↕ RIGHT-IN/RIGHT-OUT ACCESS

AERIAL PHOTOGRAPHY OBTAINED FROM
 AIRPHOTO EXPRESS, LLC
 2915 S. WILSON PARKWAY, SUITE 211
 TEMPE, AZ 85284
 FLOWN 09/11/07

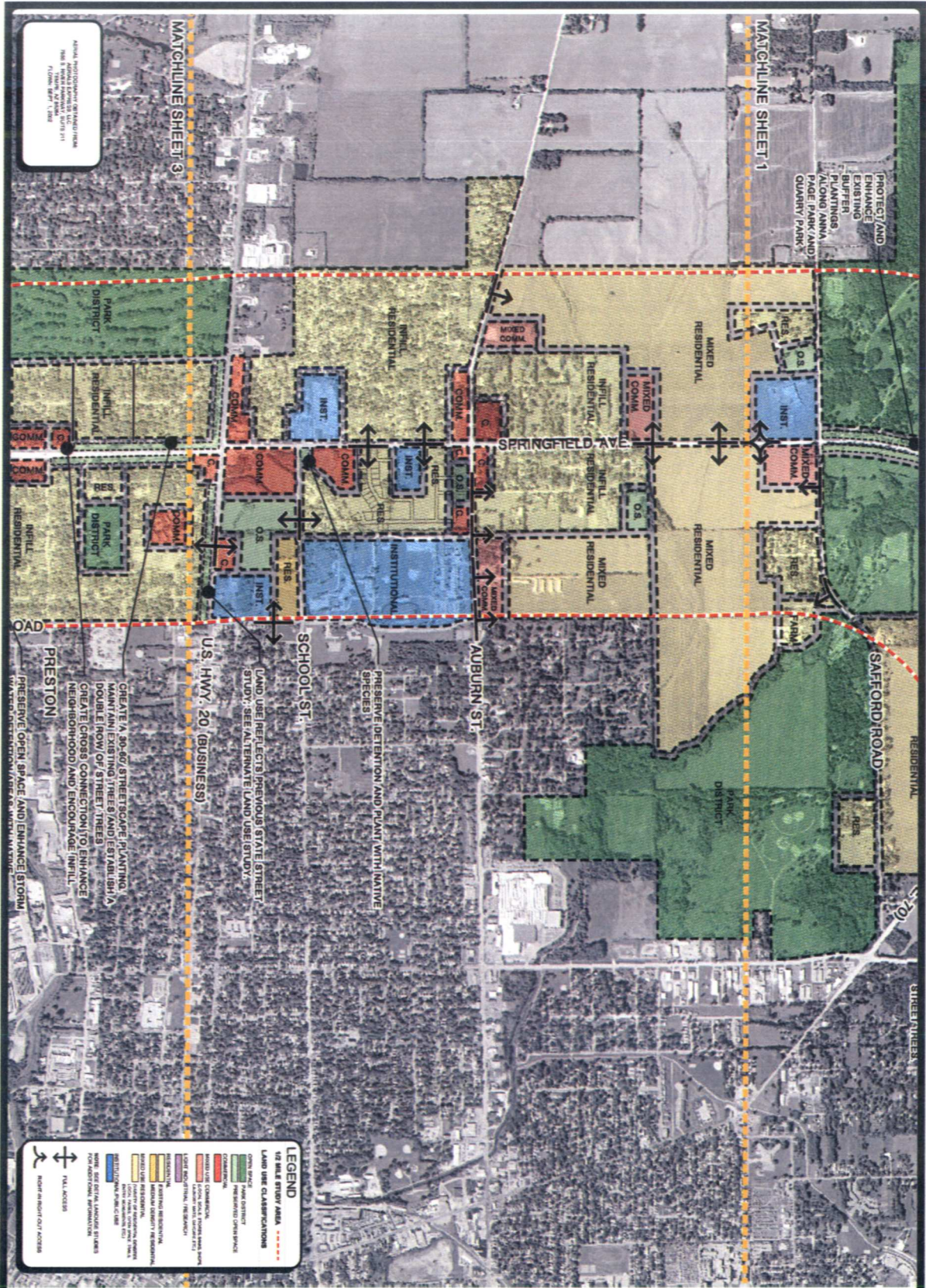
EXHIBIT 7

FUTURE LAND USE PLAN

Lannert Group © 2004 The Lannert Group, Inc.
 Landscape Architecture • Planning • Community Consulting
 215 Fulton Street
 Geneva, Illinois 60134
 (830) 208-8088
 Fax (830) 208-8000
 http://www.lannert.com
 gl@lannert.com

WINNEBAGO COUNTY
 COUNTY ADMINISTRATION BUILDING
 404 ELM STREET, ROOM 202
 ROCKFORD, ILLINOIS, 61101
 (815) 987-3333
 (815) 987-3008

DATE	04/15/08
SCALE	AS SHOWN
DRAWN BY	GL
CHECKED BY	GL
APPROVED BY	GL
DATE	04/15/08



ANIMAL PHOTOGRAPHY BY WALTER/STAN
 808 S. WATSON AVENUE, SUITE 211
 ROCKFORD, ILLINOIS 61102
 PHONE: 815.397.1100

LEGEND

VIAS RIGHT-OF-WAY / ASSESS

- VIAS RIGHT-OF-WAY
- ASSESS

LAND USE CLASSIFICATION

- COMMERCIAL
- INSTITUTIONAL
- MIXED RESIDENTIAL
- RESIDENTIAL
- INDUSTRIAL
- OFFICE
- COMMUNITY CENTER
- PARK
- OPEN SPACE
- UNDEVELOPED

OTHER FEATURES

- VIAS RIGHT-OF-WAY
- ASSESS
- VIAS RIGHT-OF-WAY
- ASSESS
- VIAS RIGHT-OF-WAY
- ASSESS

FUTURE LAND USE

SCALE 1" = 500'

NORTH

EXHIBIT 23

Lannert Group

Landscape Architecture • Planning • Community Consulting

215 Fulton Street
 Geneva, Illinois 60134

© 2004 The Lannert Group, Inc.

(815) 208-8088
 Fax: (815) 208-8050
<http://www.lannert.com>
 tl@lannert.com

WINNEBAGO COUNTY

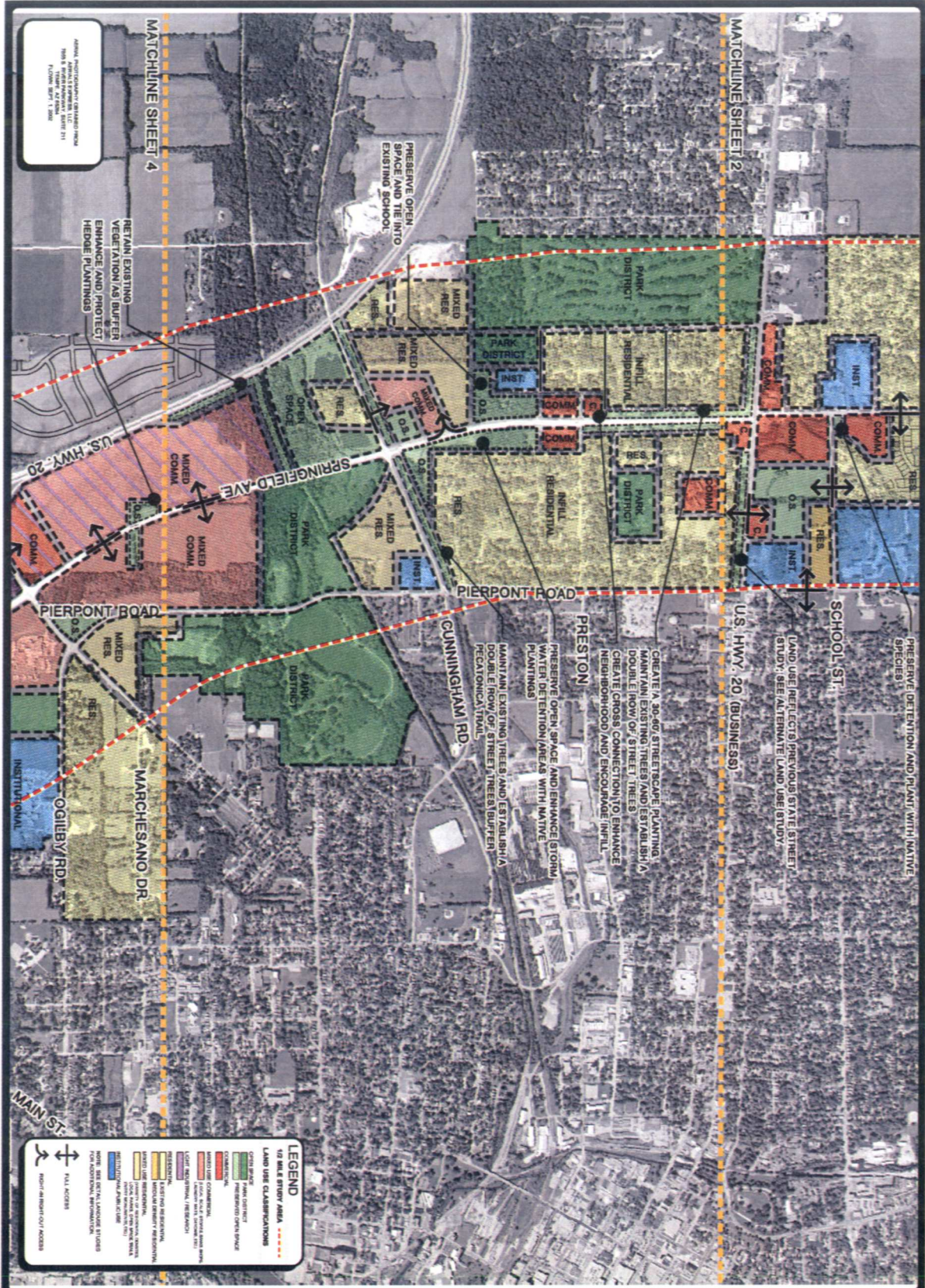
COUNTY ADMINISTRATION BUILDING
 404 ELM STREET, ROOM 202
 ROCKFORD, ILLINOIS, 61101

(815) 987-3033
 (815) 987-3008

DATE: 10/22/2004

REVISIONS:

DESIGNED BY: E.H.



AREAL PHOTOGRAPHY BY LANDFORM
 300 N. WASHINGTON AVE., SUITE 211
 FLOWERS, MISSOURI 63001

LEGEND

1/8 MILE STUDY AREA - - - - -

LAND USE CLASSIFICATIONS

- GREEN SPACE
- CONSERVATION
- PRESERVED OPEN SPACE
- RESIDENTIAL
- COMMERCIAL
- INDUSTRIAL
- INSTITUTIONAL
- OFFICE
- RECREATION
- UNDEVELOPED
- WATER
- ROADS
- RAIL
- PORT-RELATED ACCESS

1/8 MILE STUDY AREA

LEGEND

1/8 MILE STUDY AREA - - - - -

LAND USE CLASSIFICATIONS

- GREEN SPACE
- CONSERVATION
- PRESERVED OPEN SPACE
- RESIDENTIAL
- COMMERCIAL
- INDUSTRIAL
- INSTITUTIONAL
- OFFICE
- RECREATION
- UNDEVELOPED
- WATER
- ROADS
- RAIL
- PORT-RELATED ACCESS

FUTURE LAND USE

SCALE 1"=500'

NORTH

EXHIBIT 24

Lannert Group
 Landscape Architecture • Planning • Community Consulting
 215 Fulton Street
 Geneva, Illinois 60134

© 2004 The Lannert Group, Inc.
 (630) 208-8088
 Fax: (630) 208-8050
 http://www.lannert.com
 info@lannert.com

WINNEBAGO COUNTY
 COUNTY ADMINISTRATION BUILDING
 404 ELM STREET, ROOM 202
 ROCKFORD, ILLINOIS, 61101
 (815) 967-3033
 (815) 967-3008

DATE: 12/22/2008
 REVISED:
 DRAWN BY: ELL

