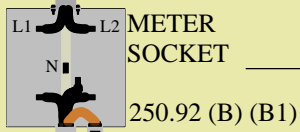


36" WIRE
FOR LOOP
CLEARANCE
230.24

ELECTRICAL SERVICE HOOK-UP FOR COM. ED.

RIGID, IMC, OR ALUMINUM
CONDUIT PER COUNTY



60" MAX.

30" MIN.

METAL ENCASED TO FIRST ROD
RIGID, EMT, OR ARMORED CABLE
PER COUNTY 250.64 (E) (C)

DUCT SEAL
CONDUIT
OPENING
ENTERING
HOUSE L8

GRADE LEVEL

NEC 2002 Rev. 11-2006 (JM)

6' MINIMUM

250.53 (B)
CLAMP APPROVED
FOR DIRECT BURIAL

5/8" DIAMETER ROD